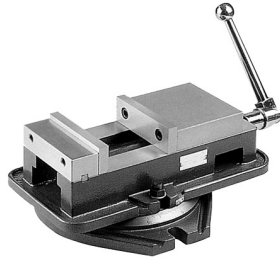


ULTRA PRECISION MILLING MACHINE VISES WITH SWIVEL BASE



SERIES 388:

Special construction prevents tilting of jaw and work. Manufactured to highest precision standards with many features including: totally enclosed lead screw, hardened and ground and easily removable jaws, ground top and bottom surfaces, coolant trough, graduated swivel base, flame hardened vise bed, etc.



Width of Jaws	Height of Jaws	Jaw Opening*	Overall Height	Weight	Order No.	Price
4	1-1/8	4	4-3/4	46 lbs.	2235104	
6	1-1/2	5-1/2	6	107 lbs.	2235106	
8	2	7-3/4	7	225 lbs.	2235108	

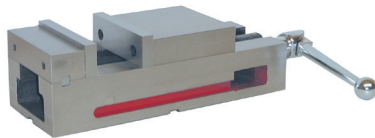
* By repositioning the jaws the clamping capacity can be increased.

ULTRA PRECISION MILLING MACHINE VISE - TYPE II



SERIES 388:

Similar features to above vises but without Swivel Base.

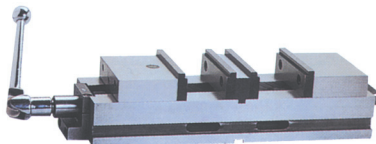


- Perfect for multiple vise setups NC/CNC Machines.
- Permits fast, accurate multiple machining.
- All sides accurately ground permitting clamping in different modes (up-right, vertical, and sideways).

Width of Jaws	Height of Jaws	Jaw Opening	Overall Height	Weight	Order No.	Price
6	1-3/4	5-3/4	4-11/16	66 lbs.	2235506	

ULTRA PRECISION MILLING MACHINE VISE WITH TWO CLAMPING STATIONS

SERIES 388:



- Produce twice the parts per table load.
- Reversible jaws can be changed from standard to stepped part holding mode for thin or small parts.
- Every side of body is precision ground and the height matched within +0.15", can be mounted in multiples - parallel or vertically.
- High precision and rigidity.
- Anti-tilt mechanism eliminates the life of movable jaw.
- The advanced structure can avoid clamping deflection by transmitting equal and opposing force into the stationary jaw.
- Ductile cast iron body with hardened upper guide surface for improved rigidity and wear resistance.

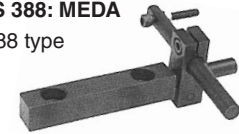
Jaws Width	Jaw Height	Vise Height	OAL	Weight	Order No.	Price
6"	1-1/2"	5"	24"	110 lbs.	3880001	

WORK STOPS FOR VISES

SERIES 366: KURT SERIES 388: MEDA



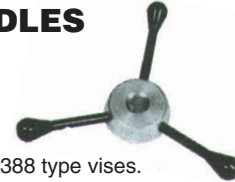
For use with SERIES 366 & 388 type vises. Permits fast, completely accurate positioning of repetitive work.



Jaw Width	MEDA		KURT	
	Order No.	Price	Order No.	Price
4	3880004		3660024	
6	3880006		3660026	
8	3880008		3660028	

SPEED HANDLES FOR VISES

SERIES 366: KURT
SERIES 388: MEDA



Fits all SERIES 366 & 388 type vises.

Jaw Width	Hex Size	MEDA		KURT	
		Order No.	Price	Order No.	Price
4	9/16	3881004		3660034	
6	3/4	3881006		3660036	
8	7/8	3881008		-	

VERSATILE LOCK™ VISES

SERIES 366:



The Kurt Versatile Lock Vises are designed for maximum workholding versatility in most CNC machining applications. Versatile Lock vises are stronger, lighter and more easily mounted than any other precision machine vise. With their modular design they are easily convertible in special clamping situations.

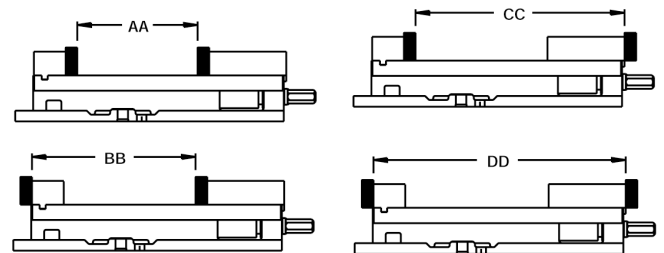


Hydraulic and Air models also available; please inquire.

FEATURES

- Can be mounted upright or on either side.
- .0005" clamping repeatability
- Foot print on the short version (Model No. 3620V) is 13", ideal for the smallest machines.
- 10 year limited warranty

JAW PLATE POSITION



Type	Model No.	Jaw Width	Jaw* Opening	Length	Wt. lbs.	Order No.	Price
Standard	3600V	6"	6"	15.060	69	3663600	
Short	3620V	6"	4"	12.940	64	3663620	

*In AA position

Jaw Plate Position	Maximum Jaw Opening	
	Standard	Short
BB	9.500	7.500
CC	11.250	9.250
DD	14.750	12.750

WORK HOLDING DEVICES - VISES

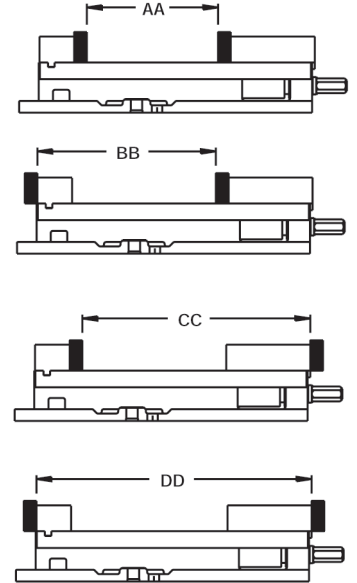


ANGLOCK® D-SERIES VISES

SERIES 366:



The original KURT AngLock D-Series Vises are designed for precision part clamping on basic machine tools such as knee type mills, grinders and machining centers. D-Series vises are ideal for use in running production parts where datums, flatness and parallelism is important. You can precision bore, tap, drill, grind and finish with high accuracy on most parts made of die cast aluminum, steel, and iron, in your KURT AngLock Vises.



All KURT vises have a friction reducing, needle bearing, thrust collar on the screw. The needle bearing increases jaw clamping pressure.

OTHER FEATURES

- AngLock design assures the moveable jaw does not lift.
- Hardened jaw plates.
- Semi-hard steel screw. 80,000 PSI ductile iron construction.
- Ten year limited warranty.

ACCESSORIES Swivel bases, workstops, keys and a variety of jaw plates.

Jaw Width	Jaw* Opening	Length	Weight.	Model No.	Order No.	Price
4	3-7/8	12.340	32	D40	3660040	
6	7-1/2	16.750	75	D675	3660675	
6	8.80	16.810	75	D688	3660688	
8	10	21.810	158	D810	3660810	
10	9-3/4	27.500	300	D100	3660100	

* With jaw plates in AA position (see line drawing).

SWIVEL BASES

Model No.	Wt.	Fits Vise Model No.'s	Order No.	Price
D40-4-SA	16	D40	3600041	
D50-4-SA	20	D50	3600051*	
D60-4-SA	26	D60, D675, D688	3600061	
D80-4-SA	80	D80, D810	3600811	

*LIMITED QUANTITY

Maximum Jaw Opening

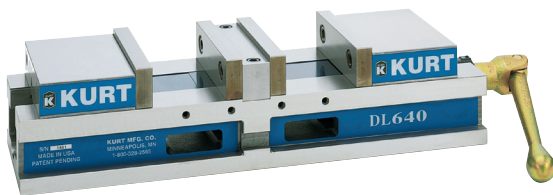
Jaw Plate Position	Jaw Width						
	3"	4"	5"	6"*	6"***	8"	10"
BB	4-3/8	5-3/4	6-1/2	10-1/2	11.500	13-1/2	14
CC	6-5/8	8-7/16	9-3/4	13-1/8	14.320	17-1/4	19-3/4
DD	8-1/4	10-5/16	12	15-7/8	17.030	20-3/4	24-3/4

*D675 **D688



While we show only the most popular **KURT** items we can supply their entire range of products; please inquire.

DOUBLELOCK® VISES

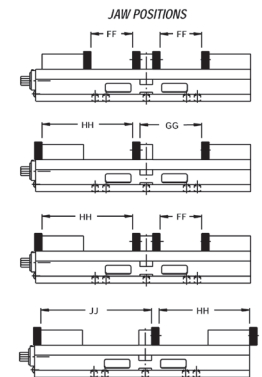


Doublelock vises offer cost savings productivity by maximizing the numbered parts in the work envelope.

Hydraulic models also available; please inquire.

FEATURES

- Offers 2 clamping stations
- Large Capacity
 - DL430 3" x 4" each station
 - HDLM6J 4" x 6" each station
 - DL800 6" x 8" each station
- .0002" repeatable clamping accuracy
- Performs first and second operations simultaneously.
- Precision ground on all sides
- 80,000 PSI ductile iron body
- Reversible hardened jaw plates
- Body height matched to within .001"
- 10 Year limited warranty.



Maximum Jaw Opening

Jaw Width	Jaw Position		
	GG	HH	JJ
4"	4.547	6.637	8.184
6"	5.965	8.785	10.750
8"	8.925	13.075	16.000

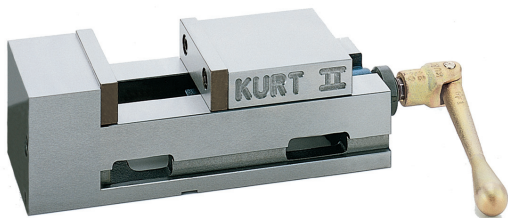
Model No.	Jaw Width	Jaw Opening	Length	Weight lbs.	Order No.	Price
DL430	4"	3"	16.125	45	3660430	
HDLM6J	6"	4"	21.000	100	3660640	
DL800	8"	6"	30.000	250	3660800	

*In FF Position, each station



ANGLOCK® PT-SERIES VISES

SERIES 366:

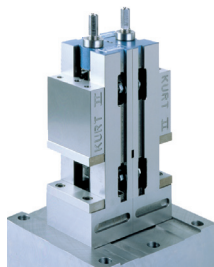


The AngLock PT Series vises offer high precision function through these important design features: the original, time-proven Kurt AngLock designs prevents parts from lifting upward under heavy clamping loads; the "pull-type" jaw clamping reduces stationary jaw deflection by at least 80% as the movable jaw is "pulled" into the stationary jaw and not pushed like standard screw type vises.

Hydraulic models also available; please inquire.

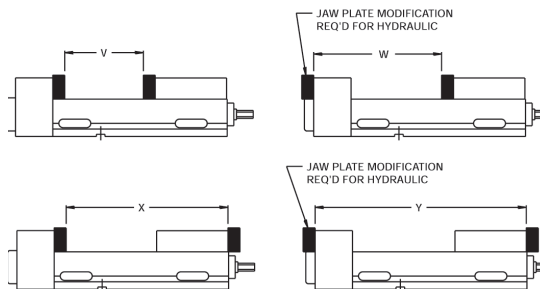
FEATURES

- "Pull-Type" clamping means high precision and repeatability.
- Up to 20,000 lbs. precision clamping force.
- Can be mounted upright or on either side.
- CNC style allows compact spacing.
- Both sides ground square to within .001" with base and top.
- 80,000-PSI ductile iron body.
- 10 year limited warranty.



PT Series vises shown mounted "back to back."

JAW PLATE POSITION AND OPENING-INCHES



Model No.	Jaw Width	Jaw* Opening	Length	Wt. lbs.	Order No.	Price
PT400A	4"	4"	11.438	32	3660400	
PT800A	8"	7-3/8"	19.875	159	9660800	

*In V position

Jaw Plate Position	Maximum Jaw Opening	
	4"	8"
W	6-3/4	12
X	8-9/16	15-13/16
Y	11-5/16	19-13/16



For Work Stops and Speed Handles see page 562 & 565.

KURT VISE ACCESSORIES

SERIES 366:

For Work Stops and Speed Handles see page 562 & 565.



6 PJS MAGNETIC JAW PLATE AND PARALLEL SET

The 6" magnetic jaw set from Kurt comes complete with two jaw plates with an embedded earth magnet for holding the parallels in place, leaving hands free to hold and clamp the workpiece.

This 11 piece set includes:

- 2 - 3/16" x 1" x 6" ground steel parallels.
- 2 - 3/16" x 1-1/4" x 6" ground steel parallels.
- 2 - 3/16" x 1-3/4" x 6" ground steel parallels.
- 1 D60-7 MAG hardened jaw plate with earth magnet.
- 1 D60-315-MAG hardened Groove Lock jaw plate with earth magnet.
- 1 WSRL 46 Kurt Groove Lock workstop.
- 1 WSRL Kurt Groove Lock extended workstop.
- 1 wooden storage box.



FEATURES

- Fits all Kurt 6 inch vises.
- Powerful earth magnets hold the parallels in place securely.
- Genuine Kurt Groove Lock workstops are included.
- D60-315-MAG jaw plate also accepts the Kurt 6AWS Workstop.

Order No. 366001 Price

6" MAGNETIC JAW PLATE

Features powerful earth magnets for holding parallels securely in place, leaving hands free to hold and clamp the workpiece. Fast and accurate set ups.



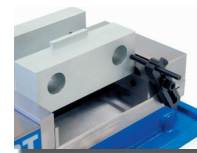
Order No. 366006 Price

6 AWS WORKSTOP

New adjustable workstop can be used on all Kurt high-density vises. It can also be used on any vise with a 5/16-18 UNC tapped hole in the base or side of the jaw. The body clamp has a 2" adjustment and features a 3" long stop pin for fast and easy set ups. A long and short spacer is also available to fit almost any application; please inquire.

FEATURES

- Versatile
- Economical
- Fast, easy set up
- Black oxide finish
- Fast accurate positioning of parts

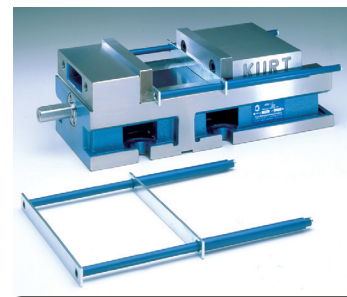


Order No. 366016
Price



PARALLEL KEEPER

Place your parallels in the vise against the jaws. Take the parallel keeper, squeeze it together and place it inside the parallels. Release the parallel keeper, it will push against the parallels, holding them against the jaws of the vise. It's that simple! Opens to 6 inches. Your new revolutionary labor saver, your "machinists third hand," is at work, saving part change time.



Order No. 366600 Price

F-TYPE MILLING VISE

SERIES: 348



Very sturdy construction. Semi-steel body with precision acme thread lead screw. Smooth jaws are made of special steel, heat treated and ground and are easily replaceable. 4 hold down flanges for mounting. Trough returns coolant.



Model No.	Width of Jaws	Height of Jaws	Max. Opening	Overall Height	Weight	Order No.	Price
FMV4*	4	1-1/8	3-1/8	3-1/8	30 lbs.	0921404	
FMV6*	6	1-3/4	4-7/8	4-1/4	72 lbs.	0921406	
FMV8*	8	2-1/2	7-1/4	6-1/8	120 lbs.	0921408	

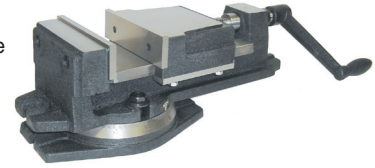
* LIMITED QUANTITY

K-TYPE MILLING VISE

SERIES 392:



Very sturdy construction. Semi-steel body with precision acme thread lead screw. Smooth jaws are made of special steel, heat treated and ground and are easily replaceable. Vise is mounted on an easily removable graduated swivel base.



Model No.	Width of Jaws	Height of Jaws	Max. Opening	Overall Height	Weight	Order No.	Price
KMV4	4	1-3/16	2-5/8	4	20 lbs.	2255004	
KMV5*	5	1-3/4	3-3/4	5-1/2	55 lbs.	2255005	
KMV6	6	1-5/8	4-9/16	5-7/8	58 lbs.	2255006	
KMV8	8	2-5/16	6	7-9/16	115 lbs.	2255008	

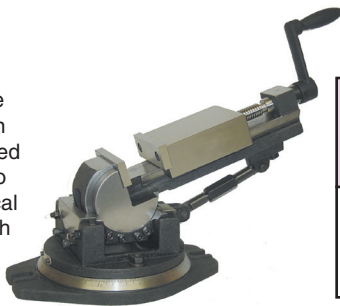
* LIMITED QUANTITY

UNIVERSAL 3-WAY ANGLE MACHINE VISE

SERIES 665:



Made of highest quality ductile iron. Angles can be set and securely locked in 3 directions. 360° graduated swivel base. Vises tilt up to 90° in the horizontal/vertical plane and up to 45° in both right and left directions.



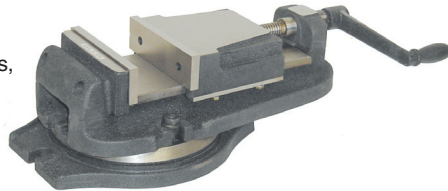
Model No.	Width of Jaws	Height of Jaws	Max. Jaw Opening	Overall Length (Lowered)	Overall Height (Lowered)	Weight	Order No.	Price
UAV3	3-3/16	1-3/16	3-5/8	15-13/16	6	32 lbs.	6650003	
UAV4	4-1/4	1-1/2	4-3/16	18-7/16	6-7/8	65 lbs.	6650004	
UAV5	5-1/4	1-5/8	5-5/8	25	8-3/16	96 lbs.	6650005	

B-TYPE MILLING VISE

SERIES 393:



Similar to Series 392 Vises, but with a coolant trough.



Model No.	Width of Jaws	Height of Jaws	Max. Opening	Overall Height	Weight	Order No.	Price
BMV4*	4	1-1/4	3-1/8	4-7/8	45 lbs.	2260004	
MBV5*	5	1-7/16	3-1/2	5-3/4	80 lbs.	2260005	
BMV6	6	1-5/8	4-9/16	5-7/8	75 lbs.	2260006	
BMV8*	8	2-1/2	6-3/4	7	175 lbs.	2260008	

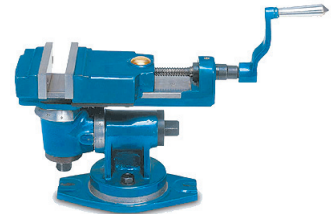
* LIMITED QUANTITY

COMPOUND MACHINE VISES

SERIES 464:



Three graduated dials enable work to be held at any compound angle. Precise construction allows vise to be locked accurately. Vises are made of high grade semi-steel and the jaw faces of specially selected hardened and ground steel.



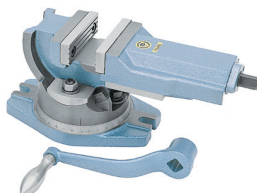
Width of Jaws	Height of Jaws	Max. Opening	Overall Height	Weight	Order No.	Price
4	1	2-3/4	6-3/4	25 lbs.	2575004	
6	1-5/8	4-1/2	8-3/4	60 lbs.	2575006	

2 WAY ANGLE MILLING MACHINE VISES WITH SWIVEL BASE



SERIES 388:

This two angle milling machine vise makes most angle settings possible. The moveable jaw, body and swivel base are made of semi-steel. Remaining parts of high quality alloy steel. The jaw plates are hardened and ground. Grooved, Step and Angle jaw plates available; please inquire. The vise rotates 360°. The lead screw is fully covered. This vise can incline from the horizontal position to an angle of 45° up or down. Vises are provided with two mounting bolts with T-nuts and one wrench.



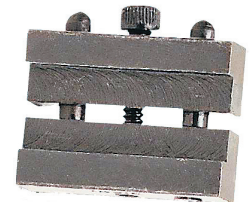
Width of Jaws	Height of Jaws	Max Opening	Overall Height	Weight lbs.	Order No.	Price
4"	1-3/4	4	6-1/4	44	2251004	
6"	2-1/8	6	8	89	2251006	

WORK STOP

SERIES 388:



Order No.	Price
3881000	



- Adjustable, spring loaded clamp for vises.
- Fits all milling vises with 3/8" (9.5mm) thru 3/4" (19.0mm) wide jaws.
- Body 1" (25mm) wide with two steel guide pins for positive clamping.
- Mounts quickly with one socket head screw



2-POSITION SELF-CENTERING MILLING MACHINE VISES

SERIES 395:

FOR HOLDING SHAFTS & ROUND WORKPIECES



This vise is used for clamping round workpieces with diameters from .394" to 6.30". For use on a milling machine or drill press.

SPECIAL FEATURES

- The jaw plates are case-hardened and heat-treated to Rockwell C 55-60.
- The vise body and 2 movable jaws are made of semi-steel.
- Vises can be set up in two positions.
- The adjustable sliding rod enables the workpieces to be set in the same position repeatedly.
- Vises are supplied with 2 clamping bolts, wrench, V-block and sliding rod.

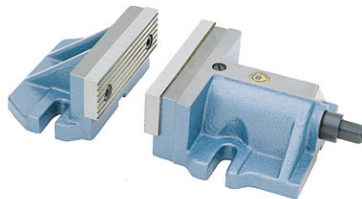
Width of Jaws	Shaft Capacity Min. - Max.	Overall Height	OAL	Max Clamping Power lbs.	Weight lbs.	Order No.	Price
4"	.394-2.48	6.69	12.00	2200	65	2270004	

2-PIECE MILLING MACHINE VISES

SERIES 464:

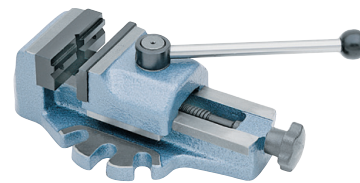
Two piece construction results in utmost clamping flexibility, on work pieces ranging from short to extra long.

Body made of meehanite casting. Jaws are hardened and precision ground. Small movement of detachable handle grips work firmly for even the heaviest cuts. Each half supplied with key slots and wedges for exact locating on machine table.



QUICK ACTING MACHINE VISES

SERIES 389:



These instant clamping vises are ideal when a large number of the same parts has to be machined on milling machines or drill presses. The clamping of the workpiece is done by a single movement of the

lever. This vise saves a lot of time with it's fast clamping mechanism. The base and movable jaw are made of semi-steel. The jaw plates are case-hardened and heat-treated. The heavy base has six clamping slots and can be clamped to a milling machine table with two bolts. The quick-acting cam can be set instantly to hold work. Jaw plate with horizontal & vertical grooves can clamp different shaped workpieces in different positions. Special 4-position jaw plate is available; please inquire.

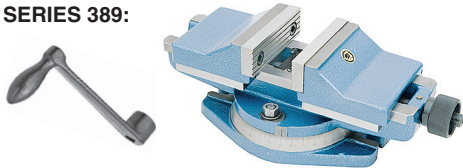
Jaw Size	Jaw Width	Depth	Weight	Order No.	Price
6	6	3	31 lbs.	2275006	
8	8	3-1/4	40 lbs.	2275008	

Width of Jaws	Height of Jaws	Max Opening	Overall Height	Weight lbs.	Order No.	Price
3"	1.18	3.15	2.8	11.5	7205000*	

* LIMITED QUANTITY

SHAPER & MILLING MACHINE VISES WITH SWIVEL BASE SELF-CENTERING

SERIES 389:



This self-centering, heavy duty, large capacity vise is designed for heavy milling or planing operations. Two movable jaws, body and swivel base are made of semi-steel and remaining parts of high quality alloy steel. The jaw plates are hardened and ground. Grooved, Step and Angle jaw plates available; please inquire. The vise can swivel on the base up to 90°. Vises are provided with two mounting bolts with T-nuts and one wrench.

Width of Jaws	Height of Jaws	Maximum Opening	Overall Height	Weight lbs.	Vise Order No.	Price
8"	2.48	6.3	7.28	130	9210008	

* LIMITED QUANTITY

HEAVY DUTY SHAPER VISES

SERIES 389:



- Rugged construction.
- Large capacity.
- Removable jaws.
- 360° swivel base.
- Rectangular base.

Model No.	Width of Jaws	Depth of Jaws	Max. Jaw Opening	Overall Lgth (Lowered)	Overall Height (Lowered)	Width Overall
SMV10	10	2-3/4	12	29-1/4	8-1/4	18-3/8
SMV12	12	3	14-3/8	34-3/8	8-3/4	21

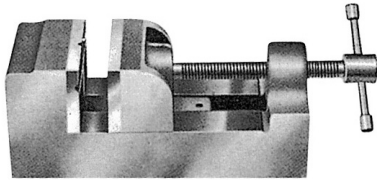
Model No.	Length of Base	Width of Base	Weight	Order No.	Price
SMV10*	18	12-1/2	230 lbs.	921702	
SMV12*	20	14-1/2	330 lbs.	921703	

* LIMITED QUANTITY

DRILL PRESS VISES

SERIES 399:

- For small drilling, tapping and grinding.
- Can be turned on either side or stood on end.
- Accurately machined and assembled from high tensile cast iron.
- Hardened and ground jaws have horizontal and vertical grooves for holding round work.

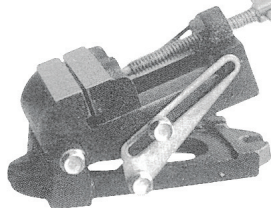


Jaw Width	Jaw Depth	Jaw Opening	Order No.	Price
2-1/2	1-1/2	2-1/2	2290002	
3-1/2	1-3/4	3-1/2	2290003	
4-1/2	1-3/4	4-1/2	2290004	

ADJUSTABLE ANGLE VISES

SERIES 399:

- All features of above vises, plus...
- Adjustable up to 90°
- Base has slots for mounting



Jaw Width	Jaw Depth	Jaw Opening	Order No.	Price
2-1/2	1-1/2	2-3/8	2295002	
3-1/2	1-3/8	3	2295003	
4-1/2	1-5/8	4	2295004	

SWIVEL AND TILT VISES

SERIES 399:

- All features of above vises, plus...
- The base has keyway and two bolt slots for locating and mounting on machine table.
- Mounted on swivel base, providing complete 360° rotation.



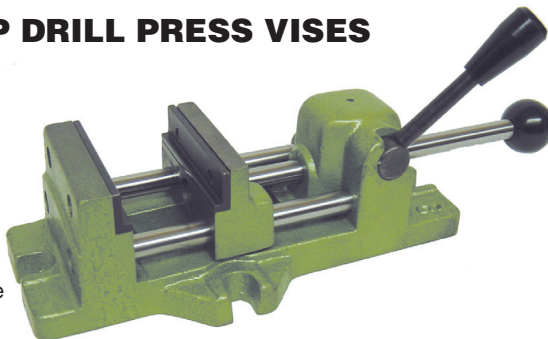
Jaw Width	Jaw Depth	Jaw Opening	Order No.	Price
2-1/2	1-1/2	2-1/2	2300002	
3-1/2	1-3/8	3	2300003	
4-1/2	1-5/8	4	2300004	

QUICK GRIP DRILL PRESS VISES

SERIES 666:

FEATURES :

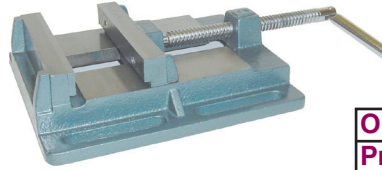
- Instant setting by moving sliding steel bar attached to moveable jaw.
- Locking lever can be set instantly to hold workpiece.
- Body and sliding jaw are made of high tensile castings.
- Lead bar, sliding bar and locking lever are hardened and ground.
- Bolt lugs for clamping.
- Hollow base for clear through drilling.
- Removable jaw plates are recessed for easy leveling of workpiece.



HEAVY DUTY DRILL PRESS VISE

SERIES 402:

- Body made of selected cast iron.
- Four slots for easy clamping to table.



Order No. 2305106
Price

SPECIFICATIONS

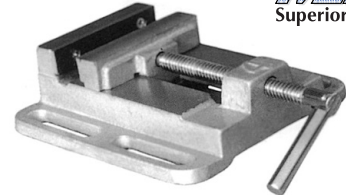
Jaw Width: 6
Jaw Depth: 2-1/4
Jaw Opening: 6
Overall Height: 3-3/4
Overall Length: 12
Overall Width: 8
Weight: 32 lbs

DRILL PRESS VISES

FLANGE TYPE

SERIES 402:

Flanged base for easy clamping to table.



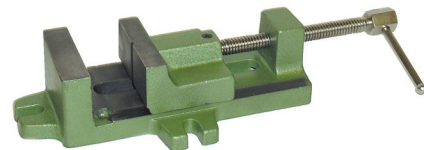
Jaw Width	Jaw Depth	Jaw Opening	Order No.	Price
3	1-1/8	3	2305003	
4	1-3/8	4	2305004	
5	1-1/2	5	2305005	
6	1-1/2	6	2305006	

UTILITY VISE

SERIES 403:

Sturdy construction makes this vise suitable for general machine work (milling, drilling, grinding, etc.)

- Moveable jaw has vertical "V" groove for holding round work.
- 3 lugs for clamping to machine table.
- Low 2-1/2" Overall Height.



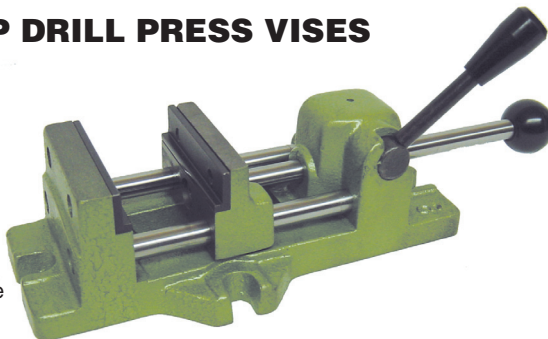
Jaw Width	Jaw Depth	Jaw Opening	Order No.	Price
3-1/2	1-3/4	4	2310003	

QUICK GRIP DRILL PRESS VISES

SERIES 666:

FEATURES :

- Instant setting by moving sliding steel bar attached to moveable jaw.
- Locking lever can be set instantly to hold workpiece.
- Body and sliding jaw are made of high tensile castings.
- Lead bar, sliding bar and locking lever are hardened and ground.
- Bolt lugs for clamping.
- Hollow base for clear through drilling.
- Removable jaw plates are recessed for easy leveling of workpiece.



Jaw Width	Jaw Opening	Jaw Depth	Weight	Order No.	Price
3	3	1-1/4	10	6660003	
4	4-11/16	1-5/16	18	6660004	
6	6-3/16	1-13/16	30	6660006	
8	8-3/8	2	45	6660008	

Models 6660013 and 6660014 are precision ground on both sides so that these vises can be used on their sides.

Jaw Width	Jaw Opening	Jaw Depth	Weight	Order No.	Price
3-1/8	2-3/4	1-1/2	10	6660013	
4	3-1/8	1-3/4	18	6660014	

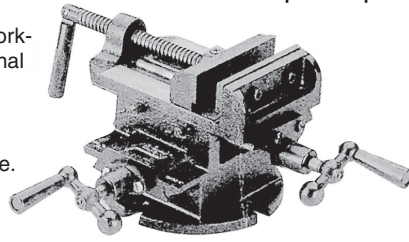
CROSS SLIDE VISES

SERIES 464:



Heavy duty cross slide vise moves work-piece in both horizontal and longitudinal directions for precise centering and drilling.

- Independent cross feed and traverse.
- Cast iron body with mounting lugs
- Adjustable gibs.
- Adjustable, graduated dials.

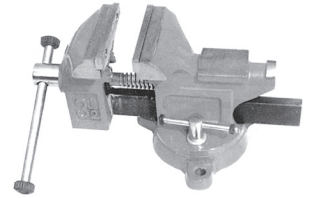


BENCH VISES WITH SWIVEL BASE

SERIES 398:



- Removable hardened alloy steel jaw inserts.
- Completely enclosed center screw.
- Attractive hammered enamel finish.



Jaw Width	Jaw Depth	Jaw Opening	Height	Table Travel	Weight (lbs)	Order No.	Price
3"	1-1/8	2-3/4	4-5/8	3" x 5"	14	4640003	
4"	1-7/16	3-3/4	5-3/8	4" x 6"	21	4640004	
5"	1-9/16	4-3/4	6-1/8	5" x 7"	30	4640005	
6"	1-5/8	5-3/4	6-1/4	6" x 8"	36	4640006	

LIMITED QUANTITIES

Jaw Width	Jaw Opening	Weight Lbs	Order No.	Price
2-1/2	2-1/2	8	3980102	
3	3	14	3980103	

WORK HOLDING DEVICES - VISES

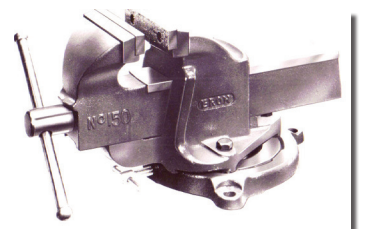
BENCH VISES - SWIVEL BASE

SERIES 464:



- 360° Swivel
- Heavy Duty Castings
- Steel Jaws
- Acme Thread Operating Screws
- Positive Lock
- Concealed Screw
- Unbreakable Nut

Model No.	Width of Jaws (inches)	Depth of Jaws (inches)	Opening of Jaws (inches)	Weight	Order No.	Price
3BH	3	1-7/8	3-1/4	15 lbs.	920773	
4BH	4	2-3/4	4-3/4	40 lbs.	920774	
5BH	5	3-1/4	6-1/2	67 lbs.	920775	
6BH	6	3-1/2	8	90 lbs.	920776	

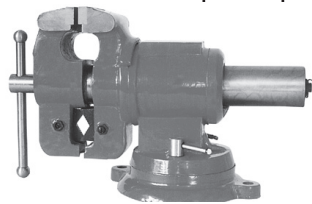


HEAVY DUTY MULTI-PURPOSE ROTATING VISES

SERIES 398:



- Full 360° rotational jaws. Head swivels 360°.
- Machine cut parallel jaws.
- Larger, stronger pipe jaws.
- Unique "V" jaws provide 4 point holding power.

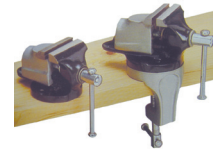


BABY BENCH VISES

SERIES 398:



- Versatile tool for filing, flattening or laying out work.



Parallel		Jaws Throat	Pipe Jaws Max.	"V" Jaws Max.	Anvil Size	Wt lbs	Order No.	Price
Width	Open	Dept.	Open	Open				
4"	3-1/2"	2-1/2"	2"	3-1/2"	2-3/8x3-1/8"	52	3980040	
5"	4"	3-1/2"	3"	4"	2-1/2x3-1/2"	89	3980050	
6"	5-1/4"	3-1/2"	6-1/4"	7-1/4"	3x4"	97	3980060	

Order No.	Description	Anvil Size/ Jaw Width	Price
3980001	Baby bench vise fixed	2"/50mm	
3980002	Baby bench vise with swivel base	2"/50mm	

STANDARD PANAVISE

SERIES 345:



Model 301

The original! The 301 Standard PanaVise is an all-purpose work holding unit, perfect for both industrial and home hobbyist applications. A single knob controls the "tilt, turn and rotate" function of the patented split ball, which allows the head to move easily and conveniently through three planes (360° rotation, 360° swivel and 90° pivot). Jaws are 2-1/2" (64mm) wide and open to 2-1/4" (58mm), and the base features a 4-5/16" (111mm) bolt circle. The combination stands 6-1/4" (173mm) tall, weighs 2 lbs. 11 oz. (1.2kg).



VACUUM BASE PANAVISE

SERIES 345:



Model 381

The 381 Vacuum Base PanaVise provides all of the "tilt, turn and rotate" versatility of a 301 Standard PanaVise with the convenience of added portability. A half turn of the mount lever attaches or releases the powerful suction pad and allows rapid set-ups in a variety of locations (for use on smooth, nonporous surfaces only). This combination stands 6-1/8" (157 mm) tall and weighs 2 lbs. 13 oz. (1.3kg).



Order No. 3450301 Price

Order No. 3450381 Price



MECHANICS' VISES

SERIES 179:

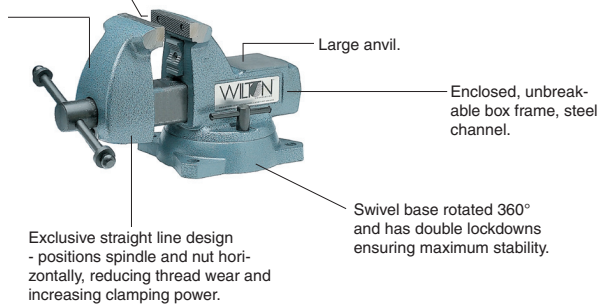
**2 YEAR GUARANTEE
MEETS ALL GOVERNMENT SPECIFICATIONS**

Wilton's Mechanics' Vises are the best buy for professional mechanics.

Jaw Width	Jaw Opening	Throat Depth	Pipe Jaw Capacity	Ship Wgt. lbs. Ea.	Model No.	Order No.	Price
4"	4-1/2"	3-7/16"	1/4" - 2"	37	744	7900744	
5"	5-1/4"	3-3/4"	1/4" - 2-1/2"	50	745	7900745	
6"	5-3/4"	4-1/8"	1/4" - 3-1/2"	64	746	7900746	

Replaceable hardened steel serrated jaw inserts and replaceable pipe jaws provide sure grip.

Heavy duty 30,000 PSI castings for long life and added strength.



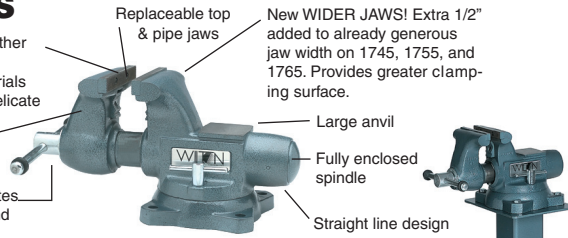
TRADESMAN SWIVEL BASE VISES

SERIES 179:

3 YEAR GUARANTEE MEETS ALL GOVERNMENT SPECIFICATIONS

Sturdy swivel base has serrated teeth on the inside track of the base. This "positive locking action" prevents slippage of the vise.

Top jaws are reversible - either standard serrated jaws for extra grip on sturdier materials or smooth jaws for more delicate pieces.
60,000PSI ductile iron
Precision thrust bearing creates greater clamping pressure and increased longevity.



Jaw Width	Jaw Opening	Throat Depth	Pipe Jaw Capacity	Ship Wgt. lbs. Ea.	Model No.	Order No.	Price
4-1/2"	4"	3-1/4"	1/4" - 2-1/2"	42	1745*	7901745	
5-1/2"	5"	3-3/4"	1/4" - 3"	53	1755*	7901755	
6-1/2"	6-1/2"	4"	1/4" - 3-1/2"	72	1765*	7901765	
8"	7"	4-3/4"	1/8" - 3-1/2"	109	1780A	7901780	
Pedestal Base fits models 1755 & 1765				55	159V	7900159	

Pedestal Base for Swivel Base Models

- Perfect for 1755 and 1765 Tradesman Swivel base models.
- 33-1/2" Tall Base.
- Made from fabricated steel.

* USA Made of USA and Canadian Components

MACHINISTS' SWIVEL BASE VISES

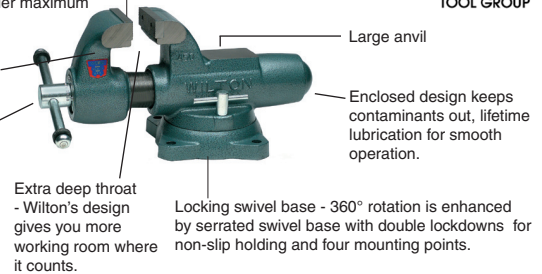
SERIES 179:

5 YEAR GUARANTEE. MEETS ALL GOVERNMENT SPECIFICATIONS.

Jaw Width	Jaw Opening	Throat Depth	Ship Wgt. lbs. Ea.	Model No.	Order No.	Price
3-1/2"	5-1/4"	2-3/4"	41	350S	7900350	
4"	6-1/2"	3-1/2"	62	400S*	7900400	
4-1/2"	7-1/2"	4"	72	450S	7900450	
5"	8"	4-1/4"	95	500S	7900500	
6"	10"	5-1/2"	150	600S	7900600	

Hardened steel jaw, replaceable inserts are machine serrated for safe, sure grip under maximum torque.

60,000PSI ductile iron
Precision thrust bearing creates greater clamping pressure and increased longevity.



* USA Made of USA and Canadian Components

COMBINATION PIPE & BENCH VISES

SERIES 179:

5 YEAR GUARANTEE MEETS ALL GOVERNMENT SPECIFICATIONS

- The "Workhorse" of the Wilton Vise Line-Up.
- Perfect to handle any workholding jobs your maintenance or construction crew encounter.
- Massively Built.
- Tool Steel Serrated Top Jaws & Pipe Jaws.

Jaw Width	Jaw Opening	Throat Depth	Pipe Jaw Capacity	Ship Wgt. lbs. Each	Model No.	Order No.	Price
3-1/2"	5"	4-1/2"	1/8" - 2-1/2"	52	C-0	7900052	
4-1/2"	6"	4-3/4"	1/8" - 3-1/2"	78	C-1*	7900078	
5"	7"	5-5/16"	1/8" - 4-1/2"	113	C-2	7900113	
6"	9"	6-5/8"	1/4" - 6"	205	C-3	7900205	

Self-centering pipe jaws - hardened steel jaws hold up to 6" pipe safely, securely.

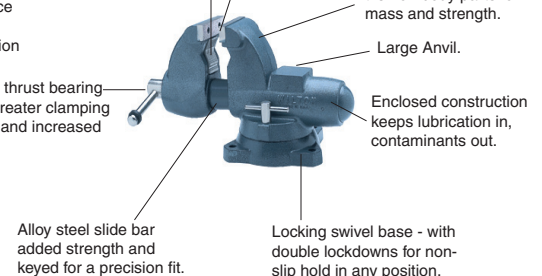
Built for the Toughest Applications

- Plant Maintenance
- Oil Field Service
- Heavy Construction

Hardened steel jaw insets - machine serrated, replaceable jaws assure a positive hold.

60,000 PSI tensile ductile iron body parts for mass and strength.

Precision thrust bearing creates greater clamping pressure and increased longevity.



* USA Made of USA and Canadian Components



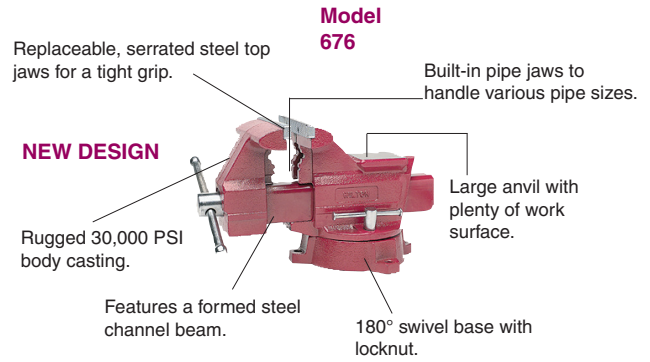
UTILITY WORKSHOP VISE

SERIES 179:

The Durable 600 Series Utility Vise is "America's Value Vise"

- Versatile, all-around vises.
- Handles a variety of applications.
- Perfect for use in utility and light duty applications.
- For heavy duty application, use the Wilton Combination Pipe & Bench Vises Machinists' Vises or Tradesman Vises (all on page 573).

Jaw Width	Jaw Opening	Throat Depth	Pipe Jaw Capacity	Wt.	Model No.	Order No.	Price
4-1/2"	4"	2-5/8"	1/8" - 2"	19	674	7900674	
5-1/2"	5"	3-7/16"	1/8" - 2-1/2"	29	675	7900675	
6-1/2"	5-1/2"	3-11/16"	1/8" - 2-1/2"	41	676	7900676	
6"	6"	4-3/16"	1/8" - 3"	63	656HD	7900656	
8"	7-1/2"	4-1/2"	1/8" - 3"	79	648HD	7900648	

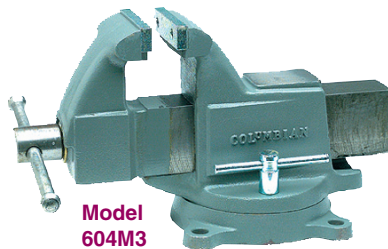


MACHINIST'S VISES

SERIES 179:

- Strong, ductile iron main castings are guaranteed against defects in workmanship and materials.
- Steel jaw faces made from hardened tool steel - have deep knurled pattern to ensure positive gripping.
- All sizes feature a generous ground/polished anvil.
- Plain jaw faces are available on request.
- Stationary models have a flat base, making it unnecessary to modify bench top for mounting.
- Swivel base models rotate 360° and gear lock bolt ensures positive locking against slippage.

COLUMBIAN®

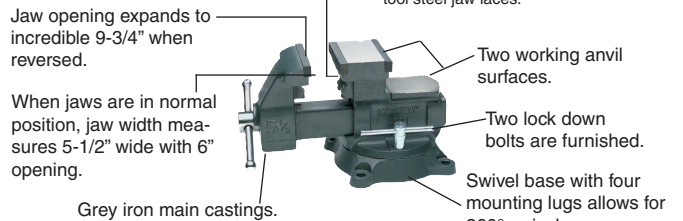


Model 604M3

MULTI-PURPOSE MACHINIST'S VISE

SERIES 179:

Jaw Width: 5-1/2"
Throat Depth: 3-3/4"
Pipe Jaw Capacity: 1/8" - 3"
Wt.: 50 lbs.
Model No.: 4500



Jaw Width	Jaw Opening	Throat Depth	Wt.	Model No.	Order No.	Price
4"	6"	3-5/8"	46	604M3	7906043	
4-1/2"	7"	4-1/8"	59	604-1/2M3	7906045	
5"	8"	4-1/4"	79	605M3	7906053	

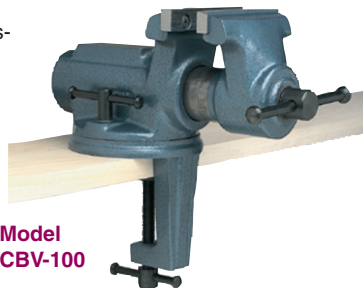
Jaw Opening	Order No.	Price
5-1/2" 9-3/4"*	7904500	

* With 4500 vise jaws in reverse position.

SUPER JUNIOR VISES

SERIES 179:

- New Super Junior Vises come in 2 styles- Clamp-on & Swivel Base.
- Both clamp-on models are portable.
- Top Jaws are grooved and replaceable.
- Spindle is fully enclosed.
- Double lockdowns ensure stability.
- Both swivel and clamp-on base models can rotate 45° left or right on base.
- Clamp-on opening for CBV-65 = 1-5/8"
Clamp-on opening for CBV-100 = 3".



Model CBV-100

VISE ACCESSORIES

SERIES 179:



IMPROVE CLAMPING VERSATILITY & SAFETY

WILTON COPPER JAW CAPS
Permanent or Temporary Work-Holding.

- Designed to avoid marring the surface of softer metals and to protect jaw face.
- 100% Copper Jaw Caps have polished faces and pliable copper extensions for a sure-grip fit on any make vise.



Jaw Width	Jaw Opening	Wt.	Model No.	Order No.	Price
Clamp-on Base					
2-1/2"	2-1/8"	9	CBV-65	7900065	
4"	2-1/4"	15	CBV-100	7900100	
Swivel Base					
2-1/2"	2-1/8"	8	SBV-65	7900165	
4"	2-1/4"	14	SBV-100	7901100	

Jaw Width	Model No.	Order No.	Price
3"	404 - 3	7904041	
3-1/2"	404 - 3-1/2	7904042	
4"	404 - 4	7904043	
4-1/2"	404 - 4-1/2	7904044	
5"	404 - 5	7904045	
5-1/2"	404 - 5-1/2	7904046	
6"	404 - 6	7904047	
6-1/2"	404 - 6-1/2	7904048	
8"	404 - 8	7904049	