



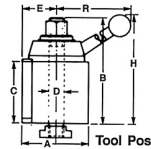
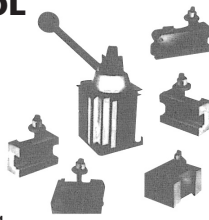
TOOL POST SYSTEM

SERIES 718:



SUPER PRECISION WEDGE TYPE TOOL POST AND TOOL HOLDER SETS

Wedge Type Tool Posts are precision engineered to assure repetitive accuracy. Advanced design provides built in quick tool changing versatility with positive rigidity to meet the most exacting working tolerances. Quickly and easily installed on an engine, bench or turret lathe for a wide range of operations, from fine precise work to heavy duty cutting.



Precision wedge type tool post sets
consist of one precision tool post
plus five tool holders.
One (1) each style: 1, 2, 4, 7, and 10

TOOL HOLDER SETS

For Swing Up To	Order No.	Price
12	7105025	
10 - 15	7105030	
13 - 18	7105035	
14 - 20	7105040	

WEDGE TYPE QUICK CHANGE TOOL POST

Features:

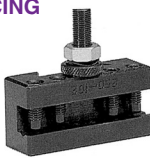
- All working parts hardened and ground.
- No time wasted with shims.
- Completely sealed for maintenance free operation.
- Maximum rigidity for chatter-free performance.
- Speed up lathe operations 90%
- Takes only a few seconds to change tools.

Series	A	B	C	D	E	H	R	For Swing Up to	Order No.	Price
AXA	2-1/2	3-7/8	2-1/4	9/16	1-3/8	4-11/16	5-3/4	12"	7100125	
BXA	3	4-5/8	2-3/4	5/8	1-5/8	5-9/16	7-5/16	10 - 15"	7100130	
CXA	3-1/2	5-1/8	3	3/4	1-7/8	6-1/8	7-7/8	13 - 18"	7100135	
CA	4	6-1/4	3-5/8	7/8	2-1/8	7	9	14 - 20"	7100140	

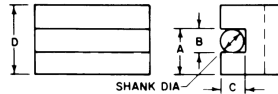
TOOL HOLDERS (INTERCHANGEABLE WITH MOST POPULAR BRANDS) Precise & Durable

TURNING AND FACING HOLDERS

Style No. 1



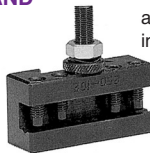
Takes various sizes of bits. Turning and facing tools can be locked in together. Saves time and labor when changing operations



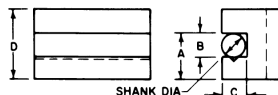
A	B	C	D	Tool Bit	Order No.	Price
15/16	1/2	7/16	1-1/2	3/16 - 1/2	7101251	
1-1/8	5/8	1/2	1-3/4	1/4 - 5/8	7101301	
1-7/16	3/4	5/8	2-1/8	1/2 - 3/4	7101351	
1-11/16	1	3/4	2-1/2	1/2 - 1	7101401	

BORING, TURNING AND FACING HOLDERS

Style No. 2



"V" groove holds round shank boring bars and tools as well as square tool bits. Boring bar not included.



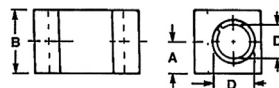
A	B	C	D	Tool Bit	Shank	Order No.	Price
15/16	1/2	7/16	1-1/2	3/16 - 1/2	7/16	7101252	
1-1/8	5/8	1/2	1-3/4	1/4 - 5/8	1/2	7101302	
1-7/16	3/4	5/8	2-1/8	1/2 - 3/4	3/4	7101352	
1-11/16	1	3/4	2-1/2	1/2 - 1	13/16	7101402	

HEAVY DUTY BORING BAR HOLDERS

Style Nos. 4 and 41



Equipped with a split bushing to accommodate a boring bar of smaller diameter. It grips with extreme rigidity, cuts smoothly without chatter. Holders supplied with split bushing.



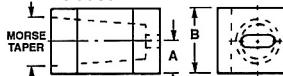
A	B	D	D1	Order No.	Price
3/4	1-1/2	3/4	5/8	7101254	
3/4	1-3/4	1	3/4	7101304	
1	2	1	3/4	7101354	
1-3/8	2-3/4	1-1/4	1	7101404	
7/8	1-3/4	1	3/4	7112541	
1	2	1-1/4	1	7113041	
1-1/8	2-1/4	1-1/4	1	7113541	
1-3/8	2-3/4	1-1/2	1-1/4	7114041	

MORSE TAPER HOLDER

Style Nos. 5 and 53



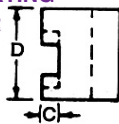
Drills with carriage by using power feed instead of tail stock. Easily centered. For Nos. 2,3 & 4 Morse Taper drills. Drills not included.



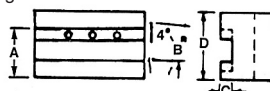
A	B	Taper Hole Size	Order No.	Price	A	B	Taper Hole Size	Order No.	Price
3/4	1-1/2	# 2 MT	7101255		3/4	1-1/2	# 3 MT	7112553	
7/8	1-3/4	# 2 MT	7101305		7/8	1-3/4	# 3 MT	7113053	
1	2	# 3 MT	7101355		1	2-1/8	# 4 MT	7113553	
1-1/4	2-1/2	# 3 MT	7101405		1-1/4	2-1/2	# 4 MT	7114053	

UNIVERSAL PARTING BLADE HOLDER

Style No. 7



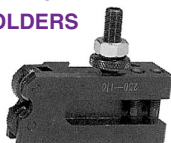
For bevel as well as T-cut blades. Enables you to cut-off close to chuck. Absence of vibration prevents breaking blades.



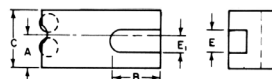
A	B	C	D	Blade Hgt	Order No.	Price
13/16	1/2	3/16	1-1/2	1/2	7101257	
1	11/16	3/16	1-3/4	11/16	7101307	
1-3/16	3/4	3/16	2	3/4	7101357	
1-7/16	7/8	1/4	2-1/2	1	7101407	

KNURLING, TURNING AND FACING HOLDERS

Style No. 10



For turning and facing as well as knurling. Supplied with a set of high speed precision ground lapped medium diamond knurls. Dimension 3/4" x 3/8" x 1/4"



A	B	C	E	E1	Tool Bit	Order No.	Price
7/8	2-1/2	1-9/16	1/2	3/8	3/16 - 1/2	7112510	
1	2-5/8	1-3/4	5/8	1/2	1/4 - 5/8	7113010	
1-3/16	3-1/8	2	3/4	5/8	1/2 - 3/4	7113510	
1-7/16	3-3/4	2-1/2	1	3/4	1/2 - 1	7114010	



TOOL POST & HOLDERS

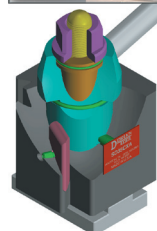
SERIES 720:



SUPER Quick Change Tool Post

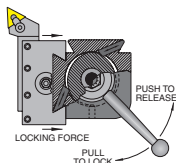


High Performance
Built to Last . . .
We Guarantee It!



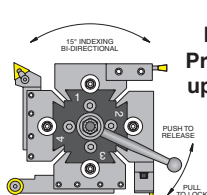
Repeatability with .00001"
Zero Backlash
Maintenance - Free
US Patented Locking System
Interchangeable with industry
standard Tool Posts

New patented locking system eliminates the worm gear and gib, which are most affected by wear. The new system increases durability and life expectancy of the tool post.

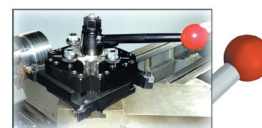


While these are the most popular holders, DORIAN makes many others; please inquire.

QUADRA Index Tool Post

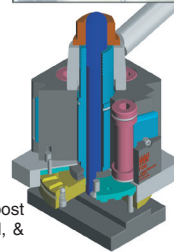


Increase Productivity up to 500%!



4 Quick Change Tool Holder
24 Position Indexing System

- 15° Indexing
 - .00005 repeatability
 - Instant tool repositioning within .00005
- The only quick change tool holder & indexing tool post "All-In-One" with precise .00005 repeatability, speed, & rigidity to make your lathe perform like a CNC.

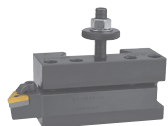


Description Order No.	SD25AXA 6101000	SD30BXA 6101002	SD35CXA 6101004	SD40CA 6101006	SD50DA 6101008	SD60EA 6101010
Price						
Lathe Swing Over Bed	UP-12"	13-15"	14-17"	16-20"	17-32"	25"-XHD
T-Tool Cap. Optimum C.H.	0.500 1.250	0.625 1.594	0.750 1.750	1.000 2.156	1.250 2.688	1.500 3.000

Description Order No.	QITP25 6100000	QITP30 6100002	QITP35 6100004	QITP40 6110006	QITP50 6110008	QITP60 6110010
Price						
Lathe Swing Over Bed	UP-12"	13-15"	14-17"	16-20"	17-32"	25"-XHD
T-Tool Cap. Optimum C.H.	0.500 1.250	0.625 1.437	0.750 1.750	1.000 2.094	1.250 2.750	1.500 3.625

#1 Turning & Facing

For high speed or carbide
square shank tools



Desc.	Order No.	Price	Desc.	Order No.	Price	Shank Size
D25AXA-1	6101100		QITP25-1	6100100		0.500
D30BXA-1	6101250		QITP30-1	6100250		0.625
D35CXA-1	6101400		QITP35-1	6100400		0.750
D40CA-1	6101550		QITP40-1	6100550		1.000
D50DA-1	6101700		QITP50-1	6100700		1.250
D60EA-1	6101850		QITP60-1	6100850		1.500

#2 Turning, Facing, & Boring

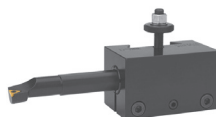
For high speed & square shank tools, &
with a "V" groove for holding a boring bar



Desc.	Order No.	Price	Desc.	Order No.	Price	Bar Cap.
D25AXA-2	6101104		QITP25-2	6100104		0.500
D30BXA-2	6101254		QITP30-2	6100254		0.625
D35CXA-2	6101404		QITP35-2	6100404		0.625
D40CA-2	6101554		QITP40-2	6100554		0.750
D50DA-2	6101704		QITP50-2	6100704		0.875
D60EA-2	6101854		QITP60-2	6100854		1.250

#4 Heavy Duty Boring

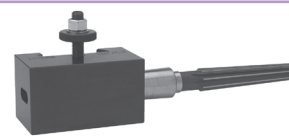
Precision ground bore with a 360° collar locking system
gives the best rigidity in metal removing without scarring
the boring bar - Double height adjustment makes
the tool reversible for extended center height range



Desc.	Order No.	Price	Desc.	Order No.	Price	Bar Cap.
D25AXA-4	6101110		QITP25-4	6101110		0.750
D30BXA-4	6101260		QITP30-4	6101260		1.000
D35CXA-4	6101410		QITP35-4	6101410		1.000
D40CA-4	6101560		QITP40-4	6101560		1.250
D50DA-4	6101710		QITP50-4	6101710		1.500
D60EA-4	6101860		QITP60-4	6101860		2.000

#5 Morse Taper

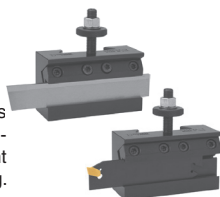
For holding morse taper tooling.



Desc.	Order No.	Price	Desc.	Order No.	Price	Morse Taper
D25AXA-5-2	6101122		QITP25-5-2	6100122		2
D30BXA-5-3	6101272		QITP30-5-3	6100272		3
D35CXA-5-4	6101424		QITP35-5-4	6100424		4
D40CA-5-4	6101572		QITP40-5-4	6100572		4
D50DA-5-5	6101722		QITP50-5-5	6100722		5
D60EA-5-5	6101872		QITP60-5-5	6100872		5

#7-71C Reversible Cut-off

For high speed & Dorcut True Grip blades. It gives
max. rigidity & performance in cutting & face grooving.
Taper lock system & double height adjustment
make the tool reversible for downright positioning.



Desc.	Order No.	Price	Desc.	Order No.	Price	Bar Cap.
D25AXA-7-71C	6101126		QITP25-7-71C	6100126		0.750
D30BXA-7-71C	6101276		QITP30-7-71C	6100276		1.000
D35CXA-7-71C	6101428		QITP35-7-71C	6100428		1.000
D40CA-7-71C	6101576		QITP40-7-71C	6100576		1.250
D50DA-7-71C	6101726		QITP50-7-71C	6100726		1.500
D60EA-7-71C	6101876		QITP60-7-71C	6100876		2.000

#881 O.D. or I.D. Threading

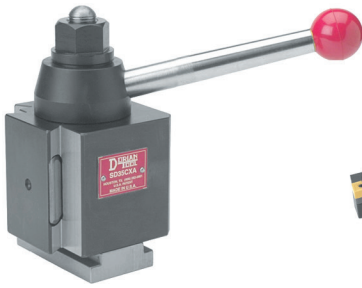
Capable of covering all threading require-
ments. Uses standard carbide inserts. Sup-
plied cartridge for external threading with an
on-edge insert



Desc.	Order No.	Price	Desc.	Order No.	Price	TNMC Inserts
D25AXA-881	6101132		QITP25-881	6100132		32
D30BXA-881	6101282		QITP30-881	6100282		32
D35CXA-881	6101434		QITP35-881	6100434		32
D40CA-881	6101582		QITP40-881	6100582		32

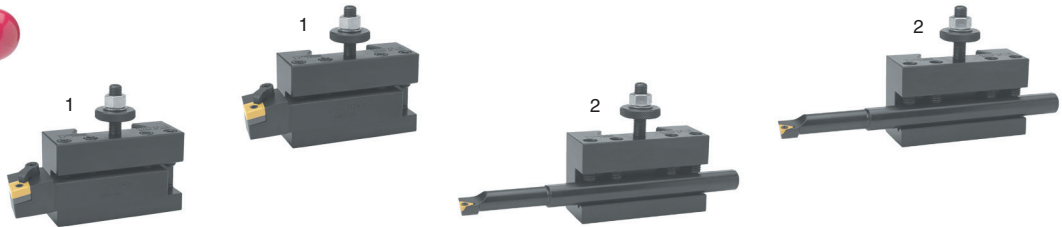


SUPER SETS
SERIES 720:



Quick Change Tool Post Turning Set

The Turning Set consists of one tool post and the four holders listed. Tool holders, inserts, and boring bars are not included.



Set Desc. Order No.	SD25AXA-TS 6101014	SD30BXA-TS 6101015	SD35CXA-TS 6101016	SD40CA-TS 6101017	SD50DA-TS 6101018	SD60EA-TS 6101019
Price						
Lathe Swing Over Bed	Up to 12"	13" - 15"	14" - 17"	16" - 20"	17" - 32"	25"-XHD
Turning Set Includes:						
1-Tool Post	SD25AXA	SD30BXA	SD35CXA	SD40CA	SD50DA	SD60EA
2-Holder No.1	D25AXA-1	30BXA-1	D35CXA-1	D40CA-1	D50DA-1	D60EA-1
2-Holder No.2	D25AXA-2	D30BXA-2	D35CXA-2	D40CA-2	D50DA-2	D60EA-2



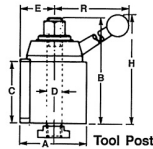
TOOL POST SYSTEM
SERIES 954:



GUARANTEED LASTING REPETITIVE ACCURACY TO WITHIN MILLIONTHS

FEATURES:

- Only a second to change tools
- Rugged - no chatter or vibration
- No time wasted with shims
- Unlimited versatility • Safe and simple to operate
- Speed your lathe operations up to 90%
- Guaranteed*



ALORIS SUPER- PRECISION TOOL POST

Precision engineered to assure repetitive accuracy. Advanced design provides built-in quick tool changing versatility with positive rigidity to meet the most exacting working tolerance. Quickly and easily installed on any engine lathe, bench or CNC lathe, for a wide range of operations - from fine precision work to heavy duty cutting.

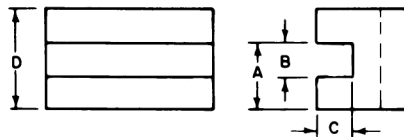


A	B	C	D	E	H	R	SWING	Model No	Order No.	Price
2-1/2"	3-7/8"	2-1/4"	9/16"	1-3/8"	4-11/16"	5-3/4"	UP to 12"	AXA	9541000	
3"	4-5/8"	2-3/4"	5/8"	1-5/8"	5-9/16"	7-5/16"	10-15"	BXA	9542000	
3-1/2"	5-1/8"	3"	3/4"	1-7/8"	6-1/8"	7-7/8"	13-18"	CXA	9543000	
4"	6-1/4"	3-5/8"	7/8"	2-1/8"	7"	9"	14-20"	CA	9544000	
5"	7-5/8"	4-5/8"	1"	2-11/16"	8-3/4"	10-7/8"	17-48"	DA	9545000	
6"	8-1/2"	5"	1-1/4"	3-1/8"	10"	13-3/4"	25" + up	EA	9546000	

* This guarantee does not include repair or replacement due to misuse, abuse, accidental damage or normal wear

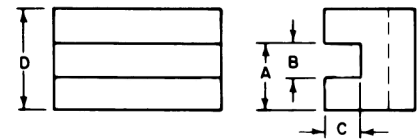
#1 TURNING AND FACING HOLDER

Takes various sizes of bits. Turning and facing tools can be locked in together. Saves time and labor when changing operations



A	B	C	D	Tool Bit	Model No	Order No	Price
15/16"	1/2"	7/16"	1-1/2"	3/16"-1/2"	AXA1	9541010	
1-1/8"	5/8"	1/2"	1-3/4"	1/4 - 5/8"	BXA1	9541020	
1-7/16"	3/4"	5/8"	2-1/8"	1/2 - 3/4"	CXA1	9541030	
1-11/16"	1"	3/4"	2-1/2"	1/2 - 1"	CA1	9541040	
2-3/16"	1-1/4"	1"	3-1/8"	1/2 - 1-1/4"	DA1	9541050	
2-11/16"	1-1/2"	1-1/4"	4"	3/4 - 1-1/2"	EA1	9541060	

#7 UNIVERSAL PARTING BLADE HOLDER



#7 Holders are only for use with T-Type blades, or with bevel (wedge-shape) blades having parallel top and bottom edges, as shown above. Enables you to cut-off close to chuck. Absence of vibration prevents breaking blades.

A	B	C	D	Blade Height	Model No	Order No	Price
13/16"	1/2"	3/16"	1-1/2"	1/2"	AXA7	9547010	
1"	11/16"	3/16"	1-3/4"	11/16"	BXA7	9547020	
1-3/16"	3/4"	3/16"	2"	3/4"	CXA7	9547030	
1-7/16"	7/8"	1/4"	2-1/2"	7/8"	CA7	9547040	
1-3/4"	1-1/8"	1/4"	2-3/4"	1-1/8"	DA7	9547050	
1-7/8"	1-1/8"	1/4"	3"	1-1/8"	EA7	9547060	

(Continued)

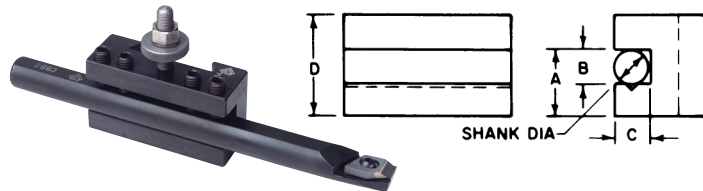


TOOL POST SYSTEM

SERIES 954:
(Continued)



#2 BORING, TURNING & FACING HOLDER

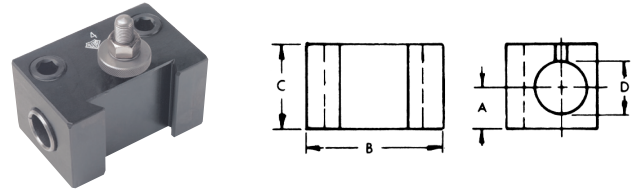


"V" groove holds round shank boring bars and tools as well as square tool bits.

A	B	C	D	Shank	Tool Bit	Model No	Order No.	Price
15/16"	1/2"	7/16"	1-1/2"	7/16"	3/16 - 1/2"	AXA2	9542010	
1-1/8"	5/8"	1/2"	1-3/4"	1/2"	1/4 - 5/8"	BXA2	9542020	
1-7/16"	3/4"	5/8"	2-1/8"	3/4"	1/2 - 3/4"	CXA2	9542030	
1-11/16"	1"	3/4"	2-1/2"	13/16"	1/2 - 1"	CA2	9542040	
2-3/16"	1-1/4"	1"	3-1/8"	1"	1/2 - 1-1/4"	DA2	9542050	
2-11/16"	1-1/2"	1-1/4"	4"	1-1/4"	3/4 - 1-1/2"	EA2	9542060	

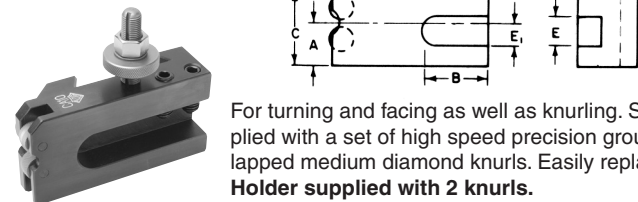
#4D BORING AND FACING HOLDER

Precision ground bore and split clamping design to accommodate excellent clamping pressure and the ability to adjust positive to negative cutting angle on boring bar. Bushings sold separately.



A	B	D	Model No.	Order No.	Price
3/4"	1-1/2"	3/4"	AXA-4D	9544010	
1"	2"	1"	BXA-4D	9544020	
1"	2"	1"	CXA-4D	9544030	
1-3/8"	2-3/4"	1-1/4"	CA-4D	9544040	
1-5/8"	3-1/4"	1-1/2"	DA-4D	9544050	
2-1/4"	4-1/2"	2-1/2"	EA-4D	9544060	

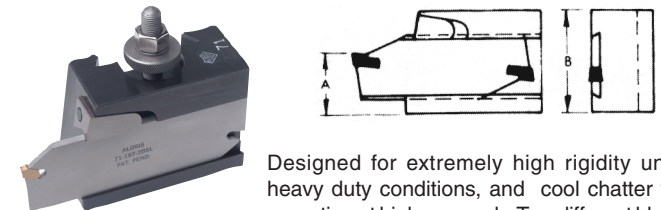
#10 KNURLING, FACING AND TURNING HOLDER



For turning and facing as well as knurling. Supplied with a set of high speed precision ground and lapped medium diamond knurls. Easily replaceable.
Holder supplied with 2 knurls.

A	B	C	E	E1	Model No	Tool Bit	Order No.	Price
7/8"	2-1/2"	1-9/16"	1/2"	3/8"	AXA-10	3/16 - 1/2"	9541001	
1"	2-5/8"	1-3/4"	5/8"	1/2"	BXA-10	1/4 - 5/8"	9541002	
1-3/16"	3-1/8"	2"	3/4"	5/8"	CXA-10	1/2 - 3/4"	9541003	
1-7/16"	3-3/4"	2-1/2"	1"	3/4"	CA-10	1/2 - 1"	9541004	
1-7/8"	4-1/2"	3-1/8"	1-1/4"	1"	DA-10	1/2 - 1-1/4"	9541005	

#71 CUT-OFF AND GROOVING HOLDER



Designed for extremely high rigidity under heavy duty conditions, and cool chatter free operation at higher speeds. Two different blades can be used with this holder: self-locking throwaway insert blade, or reversible blade with brazed-in carbide tips. The chip-breaker is an integral part of the blade and cannot be lifted by broken chips.


A	B	Used with blade widths	Model No.	Order No.	Price
15/16"	1-13/16"	1/8, 3/16, or 1/4"	AXA71	9547110	
15/16"	2"	1/8, 3/16, or 1/4"	BXA71	9547120	
1-5/16"	2-3/8"	1/8, 3/16, or 1/4"	CXA71	9547130	
1-7/8"	3-1/4"	3/16 or 1/4"	CA71	9547140	
2"	3-1/4"	3/16 or 1/4"	DA71	9547150	
2-1/16"	3-3/8"	3/16 or 1/4"	EA71	9547160	

5 PIECE SET

"5 PC" SET CONSISTS OF THE FOLLOWING: Tool Post, Custom "T"- Bolt & Holders shown below (#1, 2, 4D, & 7).



Series	Model No.	Order No.	Price
AXA	1-BS	9540101	
BXA	2-BS	9540102	
CXA	3-BS	9540103	
CA	4-BS	9540104	
DA	5-BS	9540105	
EA	6-BS	9540106	

While we show some of the most popular  items, we can supply their entire range of products; please inquire.

TOOL POST TURRETS

SERIES 300:



- 4 Tools can be mounted and quickly indexed into any of 12 different positions.
- Indexing stations are spaced 30° apart.
- All essential parts are hardened for long life and made to highest accuracy standards for utmost precision.
- All models furnished with a machineable base to fit your machine.

Model No.	Size	Swing of Lathe	Tool Range	Order No.	Price
TP2	2-1/2	6-12	1/4-3/8	7250002	
TP3	3-1/2	10-13	3/8-1/2	7250003	
TP4	4-1/2	13-16	1/2-3/4	7250004	
TP6	6	14-21	7/8-1-1/4 or No.2 Tool Holder	7250006	

TAILSTOCK TURRETS

SERIES 300:

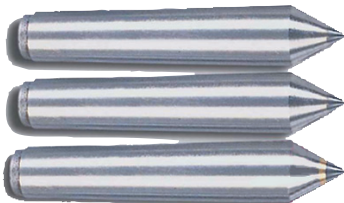


- Have 6 holes for holding 6 tools.
- Precision made for highest accuracy.
- Available in 2 sizes with different shanks.
- Conveniently located lever provides instant change-over from one tool to another.

Model No.	Dia. of Head	Hole Size	Shank	Order No.	Price
TTA	2-1/2	5/8	M.T.1	7301001	
TTA	2-1/2	5/8	M.T.2	7301002	
TTB	5	1	M.T.2	7302002	
TTB	5	1	M.T.3	7302003	
TTB	5	1	M.T.4	7302004	
TTB	5	1	1" S.S.	7302010	

SOLID LATHE CENTERS

SERIES 316:



Hardened and ground to closest tolerances.

Morse Taper	Carbon		H.S.S.		Carbide Tipped	
	Order No.	Price	Order No.	Price	Order No.	Price
1	1945001		1950001		1955001	
2	1945002		1950002		1955002	
3	1945003		1950003		1955003	
4	1945004		1950004		1955004	
5	1945005		1950005		1955005	
6	1945006		1950006		1955006	

DEAD CENTERS WITH NUT

SERIES 647:



+/-0.0001" T.I.R.

- Centers are provided with the Nut.
- Run out between shank and points is accurate to +/-0.0002" T.I.R.
- These dead centers are designed for use wherever high accuracies are required.
- Case hardened to 61-63 HRC.
- Carbide tipped centers give longer tool life and require less regrinding.
- Center 8725 is threaded and provided with the nut to remove the center from a tailstock.

MT No.	Alloy Steel		Carbide Tipped	
	8725 Order No.	Price	8726 Order No.	Price
2	7545002		7546002	
3	7545003		7546003	
4	7545004		7546004	
5	7545005		7546005	
6	7545006		7546006	

FULL DEAD CENTERS

SERIES 647:

+/-0.0002" T.I.R.



8712

8711

HALF DEAD CENTERS

SERIES 647:



8730

8731

MT No.	Carbide Tipped		Ball Bearing Steel		1/2 Ball Bearing Steel		Half Carbide Tipped	
	8711 Order No.	Price	8712 Order No.	Price	8730 Order No.	Price	8731 Order No.	Price
1	7550005		7555005		7540001		7541001	
2	7550010		7555010		7540002		7541002	
3	7550015		7555015		7540003		7541003	
4	7550020		7555020		7540004		7541004	
5	7550025		7555025		7540005		7541005	
6	7550030		7555030		7540006*		7541006	

*LIMITED QUANTITY