

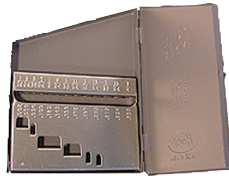


INDEXES & STANDS
SERIES 569:



DRILL INDEXES

JOBBERS LENGTH
SILVER & DEMING-1/2" Shank



Model No.	Description	Order No.	Price
313	1/16" to 1/4" x 64ths (single panel) Jobbers Length	5612750	
15	1/16" to 1/2" x 32nds Jobbers length	5610350	
20	No. 61 to 80 inc. Jobbers length	5610400	
21	1/16" to 3/8" x 64ths Jobbers length	5610450	
26	A to Z inc. Jobbers length	5610500	
29	1/16" to 1/2" x 64 ths Jobbers length	5610550	
60	No. 1 to 60 inc. Jobbers length	5610600	
80	No. 1 to 80 inc. Jobbers length	5610700	
10001	Hang-up 1/16" to 1/4" x 64ths Jobbers length	5610001	
88SD	9/16" to 1" by 16ths Silver Deming	5610760	
	15 Silver Deming 1/2" to 23/32" by 64ths	5610761	
	10 Silver Deming 47/64" to 7/8" by 64ths	5610762	
	8 Silver Deming 33/64" to 23/32" by 64ths	5610763	
1316	1/64" to 1/4" x 64ths Jobbers lengths	5610800	
119	Maintenance Index holds: 1/16", 5/64", 3/32", 1/8" #29,#, #25, 5/32", #21,3/16", 7#, 7/32", 1/4" #F, 5/16, #U, 3/8", 27/64", 7/16", 1/2"	5610875	
2100	1/16" to 1/4" x 64ths and 9/32" to 1/2" x 32nds Jobber length	5612300	

METRIC

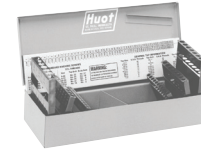
Order No.	Description	Model No.	Price
4011	1 to 6mm by 0.5mm	5611000	
4013	1 to 7mm by 0.5mm	5611050	
4019	1 to 10mm by 0.5mm	5611100	
4025	1 to 13mm by 0.5mm	5611150	
4041	6 to 10mm by 0.1mm	5611200	
4050	1 to 5.9mm by 0.1mm	5611250	
118	Holds 118 drills from 1.0mm to 13.0mm	5611825	
12765	Holds 1.0, 1.2, 1.5, 2.0, 2.5, 3.0, 3.5, 4.0, 4.5, 5.0, 5.5, 6.0, 6.5	5612765	

TAPER SHANK AND TAPER LENGTH DRILL INDEXES



No.	Model Description	Order No.	Price
1016	33/64" to 3/4" x 64ths taper shank	5610900	
2016	49/64" to 1" x64ths taper shank	5610950	
326	A to Z taper length	5611525	
329	1/16" to 1/2" x 64ths taper length	5611600	
360	No.1 to 60 taper length	5611650	

COMBINATION INDEXES



Model No.	Description	Order No.	Price
115	Holds 115 drills, same as #60, #26, #29, in one case	5611700	
135	Holds 135 drills, same as #20 #60, #26, #29, in one case	5611750	
134	Holds 134 drills, same as #20, #60, #29, #4025 in one case	5611800	
118	Holds 118 drills, from 1.0mm to 13mm	5611825	

STUB SCREW MACHINE DRILL INDEXES



Model No.	Description	Order No.	Price
2013	1/16" to 1/4" x 64ths	5611300	
2021	1/16" to 3/8" x 64ths	5611350	
2025	1 to 13mm by 0.5mm	5611375	
2026	A to Z	5611400	
2029	1/16" to 1/2" x 64ths	5611450	
2060	No. 1 to 60	5611500	
11550	Holds 115 drills: 1/16 to 1/2 x 64th, No. 1-60, A-Z	5611550	

DRILL STANDS AND BURR STAND



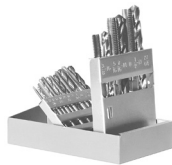
Model No.	Description	Order No.	Price
826	A to Z inc.	5611850	
829	1/16" to 1/2" x 64ths	5611900	
833	For jobbers & stub or screw machine length from 1/2" to 1" by 64ths	5611975	
833SD	For Silver Deming drills from 1/2" to 1" by 64ths	5611985	
824	Holds 24 1/4" shank burrs	5611875	

SPECIALTY FLUIDS



INDEXES, STANDS & GAGES

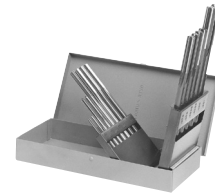
SERIES 569:



TAP/ DRILL INDEXES

Model No.	Description	Order No.	Price
99	Holds 9 drills and 9 taps - NC 6-32, #36 to 1/2"-13, 27/64"	5612600	
18	Holds 9 drills and 9 taps - NF 6-40, #33 to 1/2"-20, 29/64"	5612650	
4099	Holds 9 drills and 9 taps- METRIC 2.5mm x 0.45 tap, 2.05 drill to 12.0mm x 1.75 tap 10.20mm drill	5612675	
36	Holds 18 drills & 18 taps both models 18 & 99 in one case	5612700	

REAMER INDEXES



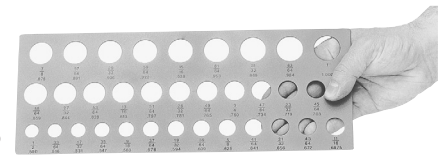
Model No.	Description	Order No.	Price
126	A to Z inc.	5612000	
129	1/16" to 1/2" x64ths	5612050	
160	No. 1 to 60 inc.	5612200	
14	14 Over and Under reamers .124-.126 to .499-.501 by 16ths	5612100	
12125	14 Dowel pin reamers .123 to .4995	5612125	
125	Metric 1.00mm to 13.00mm by 0.5mm	5612130	

STORAGE PRODUCTS

TAP INDEXES



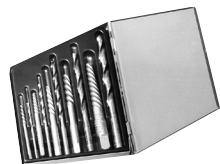
Model No.	Description	Order No.	Price
19	10 taps 0-80 to 12-28 & 9 taps 1-64 to 12-24, 19 total	5612550	
10	5 taps 1/4-20 to 1/2-13 & 5 taps 1/4-28 to 1/2-20, 10 total	5612575	
12590	10 taps 4-40, 6-32, 8-32, 10-24, 10-32, 1/4-20, 5/16-18, 3/8-16, 1/2-13, 5/8-11	5612590	



DRILL GAGES

Model No.	Description	Order No.	Price
9092	1/16" to 1/2" x 64ths	5612250	
12260	1 to 60 wire gauge	5612260	
12280	1/2" to 1" x 64ths	5612280	

SCREW EXTRACTOR INDEX

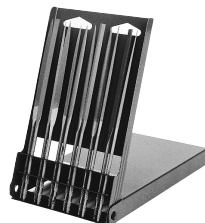


Model No.	Description	Order No.	Price
55	Holds #1 to #5 screw extractor with matching drill bits	5610200	



While we show only the popular **Huot** items we can supply their entire range of products; please inquire.

NEEDLE FILE INDEX



Model No.	Description	Order No.	Price
10010	Holds 12 assorted needle files for quick selection	5610010	

TAP & DRILL STANDS

SERIES 639:

Easy access to proper Body Drill, Tap Drill, and Tap.



English



Metric

Description	Order No.	Price
English (65 Holes for #2 to 1/2")	6000032	
Metric (45 Holes for 2-14mm)	6000033	



DISPENSERS & TOOL BOX
SERIES 569:

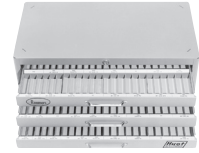


DRILL DISPENSERS



Model No.	Description	Wt.	Order No.	Price
1	For 1/16" to 1/2" X 64ths drills	10 lbs	5613000	
2	For No. 1 to 60 drills	13 lbs	5613025	
3	For A to Z drills	11 lbs	5613050	
4	For metric 1mm to 13 mm by 0.5mm	10 lbs	5613075	
5	For metric 1mm to 6.9 by 0.1 mm	13 lbs	5613100	
84	For #1 to 80 drills 84 compartments	14 lbs	5613040	
13175	For 1/16" to 1/2" x 64ths drills; A to Z, 1 to 60 drills	43 lbs	5613175	
13180	Metric .35 to 2.5mm x .05, 2.6mm to 10mm x .1 common sizes to 13mm	43 lbs	5613180	

REAMER DISPENSERS



Model No.	Description	Wt	Order No.	Price
196	Fractional reamers 1/8" to 1/2", Over/ Under Reamers from .1240 to .5010, Dowel pin reamers from .1230 to .4995	38 lbs	5613400	
13410	1/16 to 1/2 reamers 4 drawer cabinet	12 lbs	5613410	
13415	A to Z size reamers 3 drawer	11 lbs	5613415	
13420	1 to 60 reamers 5 drawer cabinet	13 lbs	5613420	
13430	Over/ Under and Dowel pin reamers	12 lbs	5613430	
13450	Fractional reamers 1/16" to 1/2", Over/ Under Reamers from .1240 to .5010, Dowel pin reamers from .1230 to .4995, Metric reamers 1.0mm to 13.0mm x .5	46 lbs	5613450	

TAP DISPENSERS



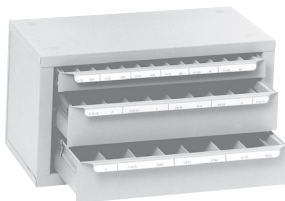
Model No.	Description	Wt.	Order No.	Price
13500	For taps 1/4-20 thru 1"-14	10 lbs	5613500	
13550	For taps 2-56 thru 12-28	13 lbs	5613550	
13575	For metric taps 3mm to 24mm	10 lbs	5613575	
13580	Holds 1/4-20 to 1"-14 taper, plug, bottoming & 2-56 to 12-28 taper, plug, bottoming & spiral	50 lbs	5613580	
13585	Holds popular NC and NF taps from 1/4 " to 1-1/2", machine screw sizes 2-56 thru 12-28 and metric 2.5mm to 30mm	50 lbs	5613585	

END MILL DISPENSERS



Model No.	Description	Wt	Order No.	Price
13300	2 Flute single and double end mills 1/16 to 1"	37 lbs	5613300	
13325	4 Flute single and double end mills 1/16 to 1"	37 lbs	5613325	
13350	1/8" to 1" end mills	10 lbs	5613350	
13375	Metric end mills in a 3 drawer Master cabinet 2.0 to 25.0	38 lbs	5613375	

TAP/ DRILL DISPENSER



Model No.	Description	Weight	Order No.	Price
1414	For taps and drills from 6-32 #36 to 1/2"-20 29/64"	10 lbs	5613590	

TOOL BOX - HEAVY DUTY
SERIES 451:



Spacious storage compartment and four smooth-gliding cantilever trays. Made of 0.8mm heavy gauge steel. Sturdy construction. Blue baked enamel durable finish. Complete with two padlock eyes on cover for attachment of lock; two heavy easy-grip round handles extending over full length of box.



Size (L x W x h)	Weight	Order No.	Price
16-3/4 x 8 x 8	11 lbs.	2525000*	

*LIMITED QUANTITY

STORAGE PRODUCTS



Made In U.S.A.

TOOL STORAGE - SHOP SERIES & WORKBENCHES **Kennedy**

SERIES 451:

*Please specify color when ordering.

Model 520

7 Drawer Machinist's Chest

- Drawers and top till wool felt-lined
- Vinyl cushioned, steel core top handle
- Six drawer dividers
- 20-1/8 W x 8-9/16 D x 13 5/8"H
- Brown wrinkle finish
- 35 lbs.



Order No. 8410520	
Price	

Model 52611

11 Drawer Machinist's Chest

- Drop front panel adds security
- Heavy Duty plated side handles
- Eight drawer dividers and wool felt-lined drawers and top till
- 26-11/16" W x 8-9/16" D x 13 5/8"H
- Brown wrinkle finish
- 56 lbs.



Order No. 4152611	
Price	

Model 266

6 Drawer Mechanist's Chest

- Full length staked chest hinges are securely welded.
- Partitioned top till holds lift-out tray
- Drawers lock when the lid is closed by internal drawer locking system.
- 26-1/8" W x 12-1/16" D x 14-3/4" H
- Brown wrinkle or smooth red finish*
- 58 lbs.



Order No. 8410266	
Price	

Model 10491

11 Drawer Pro-Line Maintenance Cart With Side Compartment

- Heavy, welded-steel construction
- Huge 39" x 18" MDF work surface
- Side compartment has adjustable MDF shelf and locking door
- Ball-bearing drawer slides
- Includes tubular side handle, aluminum drawer pulls, two keyed alike tubular locks and 5 x 2" roller bearing casters
- 39"-3/8" W x 18" D x 35" H
- High-gloss black powder finish
- 205 lbs.



Order No. 4110491	
Price	

Model 277 (Bottom)



7 Drawer Roller Chest

- Tamper proof internal drawer locking system...Fully lockable
- Comes with 5 x 1-1/4" casters
- 27" W x 18" D x 35" H
- Brown wrinkle or smooth red finish*
- 138 lbs.

Order No. 8410277	
Price	

Model 1018

Cantilever Tool Box

- Moveable/removable partitions and divider sets in two trays
- Steel core, vinyl
- 18-1/8" L x 10-1/16 W x 12-5/8"H
- Brown wrinkle finish with tan enamel trays
- 19.5 lbs.



Order No. 8411018	
Price	

Model 297 or Model 297X

7 Drawer Roller Cabinet

- Tamper proof internal drawer locking system. Fully lockable.
- Comes with 5 x 2" casters
- 29" W x 20" D x 35" H
- Brown wrinkle or smooth red finish*



Model No.	Weight	Order No.	Price
297	158 lbs.	8410297	
297X	165 lbs.	8412971	

- Model 297 comes with friction slides
- Model 297X comes with ball-bearing slides on all drawers

Model K20

Professional Flat Top Tool Box/20"

- Heavy duty, heavily plated hardware plus rolled and flattened body and lid edges for added strength
- Vinyl cushioned steel core top handle
- Lift-out tray
- 20-1/8" L x 8-5/8 W x 9-3/4 "H
- Brown wrinkle finish with tan enamel tray
- 14 lbs.



Order No. 8410020	
Price	

While we show the most popular **Kennedy** items, we can supply their entire range of products; please inquire.