



**TRANSFER PUNCHES & SETS**

SERIES 301:

- For transferring of threaded, drilled, and reamed holes.
- Punches are made of heat-treated and tempered tool steel, and have a black oxide finish.
- Diameters are .0025" undersize.
- Indexed stand.



Description	Order No.	Price
25pcs 1mm to 13mm by 0.5mm	3010025	
26pcs Letters A-Z	3010026	
28pcs 3/32" to 1/2" by 64ths plus 17/32"	1865000	
33pcs 1/2" to 1 x by 64ths	3010034	
60 pcs Numbers 1 to 60	3010060	

**INDIVIDUAL PUNCHES**

Model No.	Dia.	Order No.	Price	Model No.	Dia.	Order No.	Price
TP06	3/32	1865006		TP20	5/16	1865020	
TP07	7/64	1865007		TP21	21/64	1865021	
TP08	1/8	1865008		TP22	11/32	1865022	
TP09	9/64	1865009		TP23	23/64	1865023	
TP10	5/32	1865010		TP24	3/8	1865024	
TP11	11/64	1865011		TP25	25/64	1865025	
TP12	3/16	1865012		TP26	13/32	1865026	
TP13	13/64	1865013		TP27	27/64	1865027	
TP14	7/32	1865014		TP28	7/16	1865028	
TP15	15/64	1865015		TP29	29/64	1865029	
TP16	1/4	1865016		TP30	15/32	1865030	
TP17	17/64	1865017		TP31	31/64	1865031	
TP18	9/32	1865018		TP32	1/2	1865032	
TP19	19/64	1865019		TP34	17/32	1865034	

MARKING PRODUCTS

**LETTER AND FIGURE STAMP SETS**

SERIES 208:



- Hand held, hammer struck
- Crowned striking insures full force to the center of stamp
- Packed in durable storage containers
- LETTER SETS contain 27 pieces, A thru Z plus ampersand (&)
- FIGURE SETS contain 9 pieces, 0 thru 8 (the 6 is used as 9)
- Combination LETTER and FIGURE SETS contain 36 pieces

Stamps are made of fine quality steel, carefully hardened for utmost toughness.

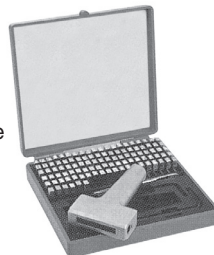
Size of Character	Letter Sets		Figure Sets		Combo Sets	
	Order No.	Price	Order No.	Price	Order No.	Price
1/16	1925004		1925104		2080104	
3/32	1925006		1925106		2080106	
1/8	1925008		1925108		2080108	
3/16	1925012		1925112		2080112	
1/4	1925016		1925116		2080116	
3/8	1925024		1925124		2080124	

**STEEL TYPE SETS**

SERIES 208:

**Includes: STEEL TYPE & HOLDER**

- With one stroke a series of letters and figures may be indented in a product or name plate with uniform legibility.
- Steel type and holders are available as a complete marking kit furnished in a case.
- Complete marking kits include a complete selection of letters, numbers, assorted marks, spacers, and a holder.



Type Size	No. of Pieces	Character Capacity	Order No.	Price
1/16	112	18	3115004	
3/32	112	12	3115006	
1/8	112	9	3115008	
3/16	106	8	3115012	

**LETTER AND FIGURE STAMP SETS**

SERIES 311:



To order individual stamps, specify set number plus character. Ex. #5 stamp in 1/8" heavy duty would be No. 3112108-5



**STANDARD GENERAL PURPOSE**

High caliber general performance at a lower cost. Recommended for medium to light duty marking. Marked with slash on thumb side.

Size of Character	Letter Sets		Figure Sets		Combo Sets	
	Order No.	Price	Order No.	Price	Order No.	Price
1/16	3110004		3110104		3120622	
3/32	3110006		3110106		3120623	
1/8	3110008		3110108		3120624	
3/16	3110012		3110112		3120625	
1/4	3110016		3110116		3120626	
3/8	3110024		3110124		3120627	

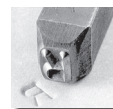
**PREMIER INDUSTRIAL HEAVY DUTY**

Large shanks are designed to hold up under continuous hard hammering. Recommended for heavy duty marking. Marked with character designation and size on thumb side.

Size of Character	Letter Sets		Figure Sets	
	Order No.	Price	Order No.	Price
1/16	3112004		3112104	
3/32	3112006		3112106	
1/8	3112008		3112108	
3/16	3112012		3112112	
1/4	3112016		3112116	
3/8	3112024		3112124	

**REVERSED**

For use in marking rubber molds, plastic molds, thin metal patterns, forging dies, etc. These stamps produce a reversed impression in the mold which produces a raised character on the molded product.



Size of Character	Letter Sets		Figure Sets	
	Order No.	Price	Order No.	Price
1/16	3101274		3101094	
3/32	3102274		3102094	
1/8	3103274		3103094	
3/16	3105274		3105094	
1/4	3106274		3106094	
3/8	3108274		3108094	

**HAND MODEL  
TYPE HOLDERS**  
SERIES 311:



Available as complete kits and as individual components.

Quickly and easily stamps a series of letters and figures on a product or name plate with uniform legibility.

**FEATURES:**

- All the type you need in one place.
- Holder and type included.
- 40 pc. set includes A-Z, 0-9, dash, 3 blank spacers.
- Sturdy plastic storage box.

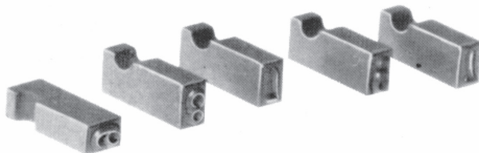


**TYPE HOLDER AND TYPE KITS**

Size	Capacity	Model No.	Order No.	Price
1/16	16	27770	1127770	
1/8	15	27774	1127774	
3/16	15	27778	1127778	
1/4	12	27782	1127782	

**TYPE HOLDERS**

Size	Capacity	Model No.	Order No.	Price
1/16	16	27601	1127601	
1/8	15	27624	1127624	
3/16	15	27605	1127605	
1/4	12	27609	1127609	



**STEEL TYPE**

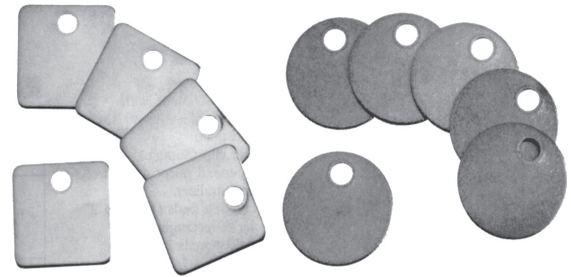
Size	Model No.	Description	Order No.	Price
1/16	27630	A - Z set	1127630	
1/16	27631	0 - 9 set	1127631	
1/16	27630BL	Blank Spacer	2763000	
1/8	27632	A-Z set	1127632	
1/8	27633	0 - 9 set	1127633	
1/8	27632BL	Blank Spacer	2763200	
3/16	27634	A - Z set	1127634	
3/16	27635	0 - 9 set	1127635	
3/16	27634BL	Blank Spacer	2763400	
1/4	27636	A - Z set	1127636	
1/4	27637	0 - 9 set	1127637	
1/4	27636BL	Blank Spacer	2763600	

Loose type available; use size and description to order. (Ex: 1/16-A)

**BLANK METAL TAGS**  
SERIES 311:



IDENTIFY, PROTECT, CONTROL



**FEATURES:**

- 100 per pack.
- Durable brass withstands constant handling.
- Use aluminum for identifying equipment and machines.
- 18 gauge.
- 3/16" hole.
- Stamped checks available; please inquire

Size	Aluminum			Brass		
	Model No.	Order No.	Price	Model No.	Order No.	Price
1" Square	913A	1141421		913B	1141422	
1-1/4" Square	916A	1141431		916B	1141432	
1" Round	1078A	1141821		1078B	1141822	
1-1/4" Round	1090A	1141841		1090B	1141842	
1-3/8" Round	1094A	1141846		1094B	1141847	
1-1/2" Round	1098A	1141856		1098B	1141857	

Price per hundred.

**BRASS INTERLOCKING  
STENCILS**  
SERIES 311:



QUICK LEGIBLE SIGNS  
ON ALL SURFACES

**FEATURES:**

- Gothic style
- Slide together and come apart easily.
- Durable brass for long-lasting service.
- Clean with paint solvent.

**Letters Only  
Single Sets:**

- 33 pieces include:
- A-Z, &
  - 1-Beginner
  - 1-Period Ender
  - 1-Spacer
  - 1-Comma
  - 1-Period
  - 1-Dash

**Numbers Only  
Single Sets:**

- 15 pieces include:
- 12345678900
  - 1-Beginner
  - 1-Plain Ender
  - 1-Dash
  - 1-Period



Size	Letters			Numbers		
	Model No.	Order No.	Price	Model No.	Order No.	Price
1"	10028	9110028		10008	9110008	
2"	10031	1110031		10011	1110011	
3"	10033	1110033		10013	1110013	

**MARKING SYSTEM**

SERIES 440:

**Etch-O-Matic**



MARKING PRODUCTS

Etch-O-Matic will etch into the surface of almost any metal, including tools, instruments, equipment, or manufactured parts, anything that can be typed, written, drawn or die impressed on a special stencil. This includes names, numbers, designs, trademarks or even your own signature. Using an Electrochemical principle, Etch-O-Matic can etch as deep as .003" of an inch in less than 30 seconds or mark the hardest tool steel or carbides almost instantly. It marks any flat or round metal surface down to 1/16" diameter and any metal thickness from thin foil up to the largest castings easily. Most marks (which look like printing or engraving) take about 5 to 20 seconds and are permanently etched into the tool.



**STARTER KIT**

**10 Volts - 2 Amps**

- 1 Etch-O-Matic (Starter Unit)
- 1 2 oz General Purpose Electrolyte
- 1 10 Pack Stencils, 2-1/4 x 3
- 1 Ground Plate
- 1 Adapter Clip (Regular)
- 1 Powder Pack Neutralizer
- 1 Instruction Sheet

**Order No. 4400000**

**Price**



**SUPER HEAVY DUTY KIT**

**15 Volts - 10 Amps**

Use on production line for continuous duty fast marking. Able to mark up to 2" x 4". For deep etch marking down to .003".

- 1 Super Etch-O-Matic Unit with Transformer
- 1 Ground Plate
- 1 Super Adapter Clip
- 1 8 oz General Purpose Electrolyte
- 1 8 oz Neutralizer
- 1 Package Felt Pads with Grid (1 Grid & 2 inside)
- 1 100 Pack Regular Stencils 2-1/4 x 3
- 1 Instruction Sheet
- Black carrying case lined with foam

**Order No. 4400001** **Price**



**SUPER INDUSTRIAL KIT**

**Kit Contains:**

- 1 Super Etch-O-Matic Unit
- 1 Starter Etch-O-Matic Unit
- 1 Regular Adapter Clip
- 1 Super Adapter Clip
- 1 8 oz Neutralizer
- 1 8 oz General Purpose Electrolyte
- 1 8 oz Stainless Steel Electrolyte
- 1 4 oz Brass, Copper, Bronze Electrolyte
- 1 4 oz Black Oxide Electrolyte
- 1 4 oz Aluminum Electrolyte
- 1 Ground Plate
- 1 Package Felt Pads with Grid (1 Grid & 2 inside)
- 2 100 Pack Regular Stencils
- 1 Instruction Sheet
- 1 Large Grid Kit
- 1 Large Grid (2x4), 2 Extra Screws, Instructions,
- 1 Large Pad Kit (5), 1 Large Stencil Kit (25) in black carrying case lined with foam

**Order No. 4400002** **Price**

**KIT REFILLS**

**ELECTROLYTE SOLUTION**

Size	General Purpose Order No.	Black Oxide Order No.	Stainless Steel Order No.	Brass, Copper, Bronze Order No.	Price Each	Alum. Order No.	Price Each
4 oz.	4401004	4402004	4403004	4404004		4405004	
8 oz.	4401008	4402008	4403008	4404008		4405008	
16 oz.	4401016	4402016	4403016	4404016		4405016	

**STENCILS**

Order No.	Etching Area	Pkg Qty	Price
4407850	2-1/4 x 3	50	
4407800	2-1/4 x 3	100	
4402100	3-1/2 x 4-1/4	100	
4402400	4-1/2 x 4-1/2	100	

**PAD REFILL KITS**

Order No.	Size	Price
4400019	19 Regular	
4400010	10 Medium	
4400110	10 Large	

**NEUTRALIZER - CLEANER**

Order No.	Size	Price
4401600	16 oz Liquid	
4401700	Powder Pack	



While we show only the most popular **ETCH-O-MATIC** items we can supply their entire range of products; please inquire.

**LAYOUT FLUIDS & ACCESSORIES**  
SERIES 608:

Aerosols cannot be shipped by air.



**DYKEM STEEL BLUE®**

is the world's leading and best-known layout fluid. Additional colors provide you with the layout fluid that is most effective for your application.

- Prevents glare with a uniform, deep color
- Dries in two to four minutes
- Lets you scribe sharp, clear precise lines
- Reduces eyestrain
- Translucent



Product	Bottle 5 oz	
	Order No.	Price
Fountain Brush & Bottle	89157	

Product	Aerosol 12 oz.		Felt Tip Applicator 2 oz.		Brush-in-Cap				Bottle 930ml	
	Order No.	Price	Order No.	Price	4oz		8 oz		Order No.	Price
					Order No.	Price	Order No.	Price		
Steel Blue	80000		9980200		80300		80400		80600	
Steel Red	80096		80296		80396		80496		80696	

**REMOVER & THINNER**

Ideal for surface preparation, as well as removing layout fluids and staining colors. May also be used to dilute staining colors.

- Thoroughly cleans and prepares metal surfaces
- Removes dirt, grease & oil from metals, most plastics and glass
- Does not contain 1,1,1-2 trichloroethane



**DYKEM HI-SPOT®**

The ideal way to identify high spots on bearings and gear surfaces.

- Non-drying
- Transfers from one surface to another
- 0.55 oz. Tube

<b>Order No. 83307</b>
<b>Price</b>

Description	Aerosol 16 oz.		Bottle 930 ml	
	Order No.	Price	Order No.	Price
Remover Cleaner Thinner	82038		82638	

**MARKING PENS** //TW DYKEM®



SERIES 608:

- CONVENIENT • FAST-DRYING • NON-SKIP

Unique Valve-Performance Tip prevents drying, leaves a bold mark on any or all surfaces, and resists oil, gas & petroleum solutions.

Permanently identifies:

- Parts Assemblies
- Tools Finished Products
- Inventories Work in Progress
- Stock Safety Cautions

Quality Dykem® Mark & Code Pens write on almost anything:

- Metal Wood
- Rubber Plastic
- Glass Cardboard and many other surfaces

Makes permanent mark, but can be removed with Dykem Remover & Cleaner in Spray or Liquid form.



Color	Valve Pen 12.0cc	
	Order No.	Price
MEDIUM TIP	Blue	84001
	Black	84002
	White	84003
	Yellow	84004
	Orange	84005
	Red	84006
	Green	84007
FINE LINE	Black	9941003
	White	9941008
	Yellow	9041006
	Red	9941002
	Blue	9941001
	Orange	9941010
	Green	9941004

**STAINING COLORS**



SERIES 608:

Ideal for quick identification on a variety of applications:

- Springs, Fasteners, Bolts and Bars,
- Engine and Electrical Components,
- Glass, Plastics, Fiberglass, Urethane,
- Ceramic, Wood, and Much More.



**FEATURES:**

- Vibrant Color Coating
- Fast Drying
- Resists Cracks and Chips
- Resistant in Transmission Oil up to 300°F
- Adheres Without Flaking and Scaling
- Available in Transparent and Opaque Formulations
- Thin coating (.0002") won't interfere with part operation

Color	8oz. Brush-in-Cap		1 Gallon		
	Order No.	Price	Order No.	Price	
OPAQUE	Black	81424	81724		
	Dk. Blue	81478	81778		
	Lt. Blue	9981425	81725		
	Dk. Green	81406	81706		
	Lt. Green	81408	81708		
	Orange	81413	81713		
	Pink	81460	81760		
	Red	81491	81791		
	White	81427	81727		
	Yellow	81405	81705		
	TRANSPARENT	Black	81431	81731	
		Purple	81404	81704	
Red		81496	81796		
Green		81465	81765		
Yellow		81451	81751		

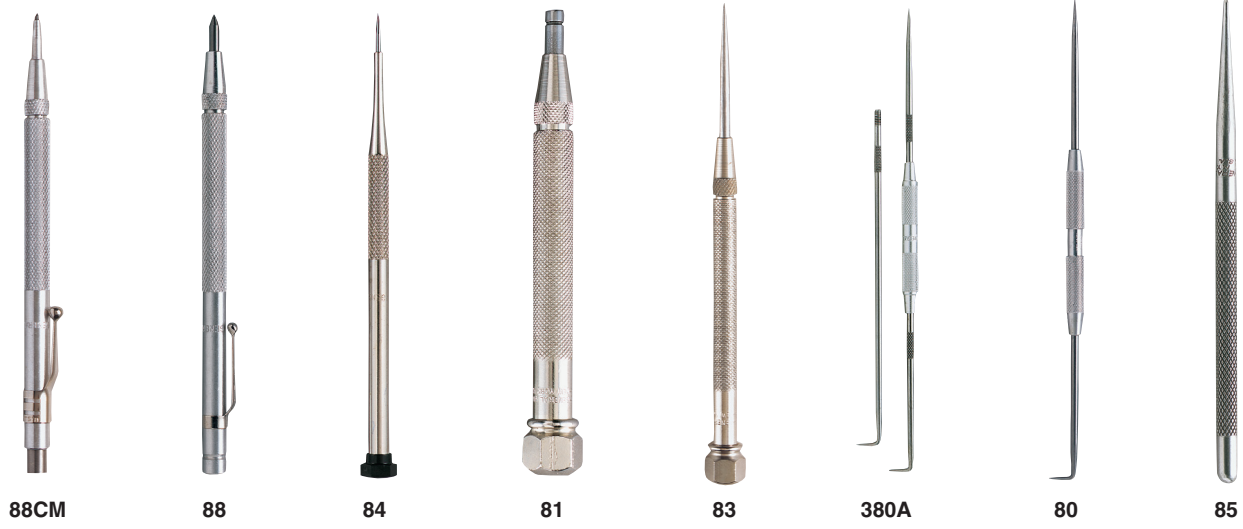
**SCRIBERS**

SERIES 213:



For **MEDA** Superior Import **SCRIBERS** see next page.

MARKING PRODUCTS



**TUNGSTEN CARBIDE SCRIBER AND MAGNET**

- Tungsten carbide tip marks hard materials including hardened steel, ceramics and glass.
- Alnico permanent magnet picks up small parts and retrieves steel chips from hard-to-reach places.
- Scriber point reverses for safety.
- Point is replaceable.
- Overall length 6".

Model No.	Order No.	Price
88CM	31116	
88P Replaceable Tip	9931114	

**THREE POINT SCRIBER**

- Finest quality machinist's scriber.
- Aluminum knurled body, with three interchangeable threaded points: short straight, short bent and long bent.
- Overall length of tool with two short points is 9".
- Overall length with one short and one long point is 12".
- Handle and short points are 3" long.

Model No.	Order No.	Price
380A	31400	



While we show only the most popular **GENERAL** items we can supply their entire range of products; please inquire.

**TUNGSTEN CARBIDE TIP SCRIBER**

- Tungsten carbide tip marks stainless steel, copper, ceramics and glass.
- Screw chuck for reversing tungsten carbide point when not in use.
- Tip is replaceable.
- Measures 6" overall.

Model No.	Order No.	Price
88	9931112	
88P Replaceable Tip	9931114	

**POCKET SCRIBER**

- Replaceable hardened and centerless ground point.
- Point reverses into knurled body for safety.
- Body diameter 3/8".
- Conforms to government specifications GGG-S- 131e.

Model No.	Body Dia.	Blade Length	OAL	Order No.	Price
81	3/8"	2-7/8"	5-7/8"	31092	
81P	Replaceable Point			31094	

**POCKET SCRIBER**

- Replaceable hardened and centerless ground point.
- Point reverses into knurled body for safety.
- Body diameter 1/4".
- Conforms to government specifications GGG-S-131e.

Model No.	Body Dia.	Blade Length	OAL	Order No.	Price
83	1/4"	2-3/8"	4-3/4"	931098	
83P	Replaceable Point			31100	

**SINGLE POINT SCRIBER**

- Hardened tempered point.
- Overall length 4-1/2".

Model No.	Order No.	Price
85	31106	\$7.10

**FIXED TWO POINT SCRIBER**

- Hardened and ground steel needle points are fixed to a knurled body.
- Has one point and one bent point.
- Measures 8-1/2" overall.

Model No.	Order No.	Price
80	9931090	\$2.95

**REPLACEABLE NEEDLEPOINT SCRIBER**

- Scribes stainless steel, copper, brass, glass and ceramics.
- Nork pattern scriber measures 5-5/16" overall.
- Four extra points are stored under cap.

Order No.	Model No.	Price
9931102	84	\$4.95
31104	84P Replaceable point	\$5.80

**MACHINISTS SCRIBERS**

SERIES 702:

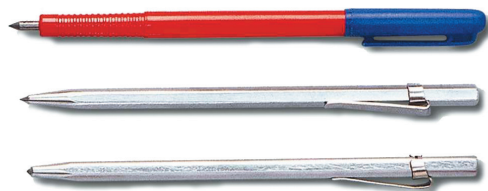
- Points hardened for accurate work.
- Ideal marking tool.
- Moderately priced.

Description	Length	Order No.	Price	
Double end scriber with knurled body	8-1/2"/ 215mm	7020812		
Three Point scriber with replaceable points, knurled aluminum body	8-1/2"/ 215mm & 12"/300mm	7020813		
Two Point scriber with replaceable points, knurled aluminium body	8-1/2"/ 215mm	7020814		
Hook scriber	8-1/2"/ 215mm	7020815		
Right angle scriber	7"/ 175mm	7020816		
Double End scriber with twisted body for firm grip	7"/ 175mm	7020817		
Single Point scriber aluminium body replaceable point	5"/ 125mm	7020818		
Single Point heavy duty scriber with knurled body	7"/ 175mm	7020819		
Double Point heavy duty scriber with knurled body	9"/ 225mm	7020820		
Chisel type scriber with one end sharp point and other knife edge.	6-1/2"/ 165mm	7020821		
Single point scriber	4"/ 100mm	7020822		
3 pc. scriber set consisting of 7020819, 7020820, 7020821	7, 9, 6-1/2"/ 175,225, 165mm	7020823		

MARKING PRODUCTS

**CARBIDE AND DIAMOND TIPPED SCRIBERS**

SERIES 702:



- For use on hard surfaces including carbide.
- Fixed points on round plastic body or hexagonal steel body.
- 6" (150mm) long, provided with clip.

Description	Order No.	Price
Carbide scriber in plastic body.	7020824	
Carbide scriber in steel body.	7020825	
Diamond scriber in steel body.	7020826	
3 pc. set (1 each of above)	7020827	

**TOOL WRAP**

SERIES 681:



TYPE 321 (For applications up to 2000° F\*)

Perfect for in-plant heat treating. Tool Wrap is ideal for heat treating any air hardening tool steel or machinable carbides. Use of this product eliminates the need for buffing and polishing as well as restricting scale and decarburization build up.

Description	Thickness	Order No.	Price
24" x 50 Foot	.002	6810500	
24" x 100 Foot	.002	6811000	

\*For higher temperature applications; please inquire.