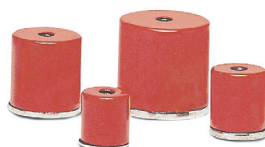


## POT MAGNETS

SERIES 239:

- Has unlimited applications such as magnetic fasteners, displays, holding maps etc.
- Has tapped hole of 1/4" - 20
- Comes with Plated Keepers



Order No.	Diameter	Height	Pull	Price
2391116	11/16"	5/8"	6 lbs.	
2391316	13/16"	3/4"	10 lbs.	
2391016	1-1/16"	1"	14 lbs.	
2390138	1-3/8"	1-3/16"	30 lbs.	

## SHALLOW POT CERAMIC MAGNETS

SERIES 239:

- Permanent, Powerful Magnets to hold, lift and attract metal parts.
- Shallow Depth permits use in confined spaces
- Model 2390134 has 10 x 24 threaded Center Hole for fastening with machine screw.
- Large Sizes have 3/8" clearance holes for fastening with rods or bolts.



Order No.	Diameter	Depth	Pull	Price
2390134	1-3/4"	1/4"	10 lbs.	
2390200	2"	3/8"	20 lbs.	
2390234	2-3/4"	7/16"	35 lbs.	
2391138	3-1/8"	1/2"	50 lbs.	

## EXTRA POWER MAGNETIC HOLDFASTS

SERIES 239:

- Have tremendous power.
- Provided with Push Off Screw to push work away from the holdfasts as this cannot be done by hand.
- Also provided with plated Keepers which protect and retain magnetic field.
- Can be used to hold work for welding, grinding. Ideal for making inexpensive lifting devices and jigs.
- Have many applications in material handling and machine shop.



Order No.	Diameter	Magnetic Pull	Price
2391340	1-3/4"	45 lbs.	
2392180	2-1/8"	70 lbs.	
2392340	2-3/4"	110 lbs.	

## MAGNETIZER / DEMAGNETIZER

SERIES 802:

Wiha magnetizer/demagnetizer magnetizes steel screwdriver blades, tweezers and similar tools. Box high quality plastic, shock-resistant, cadmium free. Magnetize by leading tool through + opening and demagnetize by leading tool through - opening. Dimensions: 2.1" x 2.0" x 1.1"



Order No.	Description	Price
40010	Magnetizer/Demagnetizer	

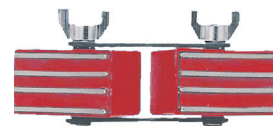


## MAGNETIC WELDING LINK

SERIES 239:

- Ideal for holding steel parts for welding, brazing etc.
- Wing nut adjustment.
- No clamp needed
- Two heavy magnetic blocks 2-3/8" (60mm) long x 1-1/8" (28mm) square linked together for easy adjustment.

Order No.	Price
9990001	



## MAGNETIC SEPARATOR

SERIES 239:



- Specially designed for separating ferrous sheets or particles.
- Very useful in workshops for cleaning machine beds, agriculture industry, etc.
- Powerful magnetic force can be demagnetized by simply pulling up the handle.

Order No.	Length x Width x thickness	Price
9990002	9-1/4 x 5-1/4 x 1" / 235 x 135 x 25mm	

## MAGNETIC RACK (ORGANIZER)

SERIES 239:



- Very handy for holding tools parts of assembly, jigs, parts for dipping, painting, sand blasting etc.
- Beautifully finished with white powder coating.

Order No.	Length	Price
9990012	12"/300mm	
2390018	18"/450mm	
2390024	24"/600mm	

## MAGNETIC QUICK CLAMPS

SERIES 239:



- Designed to enable fast and accurate holding of ferrous metals for welding and assembly.
- Small compact design with powerful magnetic force.
- Body holes enable the clamps to be built into jigs or hung when not in use.

Order No.	Diameter	Angles	Price
2394258 2394380	4-3/8" x 3-3/4" 4" x 2-5/8"	30°, 90°, 135° 30°, 45°, 60°, 75°, and 90°	

GENERAL®

ALNICO MAGNETS

SERIES 213:

GENERAL®

Aluminum, nickel and cobalt alloy makes General's Alnico line of magnets strong, and permanent. Under normal working conditions and temperatures, Alnico magnets will retain their magnetic force indefinitely. Removable keepers insure permanence. All weights and measurements are approximate.

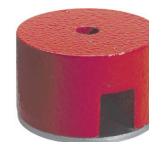
Button Type Alnico Magnets

- Button shaped magnet has almost unlimited applications.
- Retrieves screws and steel parts.
- Center hole in top of magnet for easy fastening.

Model No.	Dia.	Ht.	Pull	Cored Hole	Order No.	Price
372A	1/2"	3/8"	1-1/2 lbs.	1/8"	42073	
372B	3/4"	1/2"	4 lbs.	1/8"	42076	
372C	1"	5/8"	6-1/2 lbs.	3/16"	42079	
372D	1-1/4"	3/4"	14 lbs.	3/16"	42082	
372E	1-1/2"	7/8"	18-1/2 lbs.	1/4"	42085	



372C



372E

Pocket Horseshoe Alnico Magnets

- Small but powerful magnet.
- For retrieving small steel parts and screws from hard-to-get-at places.
- 1/4" opening between poles



370-1

Order No.	Model No.	Size	Pull	Price
42041	370-1	1-1/8W x 1H x 5/16D	2-1/4lbs.	

Magnetizer/ Demagnetizer

- Powerful magnet specially designed for magnetizing and demagnetizing screwdrivers, nut drivers, wrenches, taps and small tools.
- Converts any tool blade into a magnetic retriever for screws, nuts and metallic particles.



Order No.	Model No.	Dimensions	Price
42021	360	1"x1"x1"	

Pickup Stick™/ Sweeper

- An ideal tool for retrieving iron, steel & all ferrous materials
- Powerful, permanent magnet for a no-stoop pickup.
- Vinyl-coated magnet for long-life and durability.
- 37-inch steel shaft for greater strength and durability.
- Plastic handle grip for greater control and comfort.
- Sweeper width 24 inches.



397

Order No.	Model No.	Price
31434	397 Pickup Stick	

Pot Alnico Magnets

- Unique combination of strong magnet with insulating ring gives this magnet the superior holding power of larger ones.
- 1/4" diameter x 20 threads-per-inch hole for attaching to fixtures and machines.



Model No.	Dia.	Height	Pull	Wt.	Order No.	Price
374A	11/16"	5/8"	6 lbs.	6 oz.	42093	
374B	13/16"	3/4"	10 lbs.	6 oz.	42096	
374C	1-1/16"	1"	18 lbs.	12 oz.	9942102	
374D	1-3/8"	1-3/16"	35 lbs.	24 oz.	9942105	

Shallow Pot Ceramic Magnets

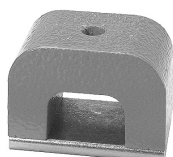
- Shallow depth permits use in confined spaces.
- Nos. 376A and 376B have 3/16" diameter clearance holes for fastening with rods or bolts.
- Nos. 376C and 376D have 9/32" diameter clearance holes.



Model No.	Dia.	Depth	Pull	Order No.	Price
376A	1-3/8"	3/16"	12 lbs.	42111	
376B	2"	1/4"	20 lbs.	42114	
376C	2-5/8"	3/8"	35 lbs.	42117	
376D	3-1/4"	7/16"	50 lbs.	42120	

Power Alnico Magnets

- Strong magnetic pull for lifting, holding, sorting, clamping or retrieving steel or iron parts.
- Hole in top of magnet for attaching conveyors, racks, and welding jigs.



Model No.	Size oz.	Approx. Pull Lbs.	Width In.	Height Inches	Pole Depth In.	Pole Width In.	Opening Between Poles In.	Cored Hole In.	Wt. ea. with Keeper	Order No.	Price
370-2	2	13	1-1/8"	3/4	3/4	1/4	9/16	3/16	3 oz.	42044	
370-4	4	22	1-1/2"	1	1	5/16	3/4	3/16	5 oz.	42050	
370-6	6	30	1-3/4"	1-1/8	1-1/8	5/16	7/8	3/16	8 oz.	42053	
370-8	8	32	2-3/16"	1-13/16	15/16	1/2	1-3/16	3/16	10 oz.	42056	
370-12	12	42	2-5/8"	2-1/4	15/16	5/8	1-3/8	3/16	15 oz.	42061	
370-16	16	50	3"	2-1/2	15/16	3/4	1-1/2	3/16	20 oz.	42064	
370-24	24	70	2-1/2"	1-13/16	1-7/8	5/8	1-3/8	1/4	28 oz.	42067	

GENERAL®

## MAGNETIC TOOLS

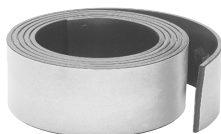
SERIES 213:

GENERAL®

While we show only the popular GENERAL® items we can supply their entire range of products; please inquire.

368

### Magnetic Strip



- Our flexible magnetic strip with adhesive backing adheres to most smooth surfaces.
- Holds small metal objects.
- 1/16" thick and easily cuts to desired length with scissors or knife.

Model No.	Size	Order No.	Price
369	1"x10'	42036	
369-100	1"x100'	42038	

386

383NX

392

384N

394

395

### Pocket Magnetic Pickups

- Powerful permanent magnet in a knurled aluminum holder with handy pocket clip.
- No. 386 has a high-powered neodymium magnet which is six times more powerful than a cobalt magnet of the same size and density.
- Ideal for retrieving small steel and iron parts from hard-to-reach areas.
- Small magnet size actually measures 2/10" x 1/4".
- Measures 5-1/2" overall.

Model No.	Magnet	Pull	Order No.	Price
386	NEO	2 lbs.	42219	

### Telescoping Magnetic Pickups

- A powerful permanent magnetic pickup tool.
- Ideal for retrieving steel and iron parts from hard-to-reach work areas.
- Magnet is fitted in a 5-1/2" long nickel plated steel handle that can extend up to 23-1/2".
- Holder is fitted with a pocket clip.

Model No.	Pull	Order No.	Price
383NX	2 lbs.	9942208	

### Magnetic Pickup With Pivot Joint

- An excellent tool for retrieving small steel parts from hard-to-reach places.
- High-power neodymium magnet lifts up to two pounds and will never lose its magnetism.
- 8-3/4" overall length.
- Locking pivot joint allows user to pick up objects around corners.
- Nickel plated steel body with cushion grip handle
- Pocket clip for convenient storage

Model No.	Pull	Order No.	Price
392	2 lbs.	42224	

### Flex-o-Stiff Magnetic Pickup

- An ideal tool for retrieving steel parts from hard-to-reach places.
- No. 384N has a high-powered neodymium magnet which is six times more powerful than a cobalt magnet of the same size and density.
- Permanent magnetic power.
- Magnet is fitted into an 18" nickel plated holder, which can be extended to a 32" flexible retriever.

Model No.	Magnet	Pull	Order No.	Price
384N	NEO	2 lbs.	42210	

### Extra-Long, Magnetic Pickup With Pivot Joint

- An excellent tool for retrieving steel parts from hard-to-reach places.
- High-power neodymium magnet lifts up to 5 lbs. and will never lose its magnetism.
- Steel body measures 13" and can be extended to 27".
- Locking pivot joint allows user to pick up objects around corners.
- Body is chrome plated, with a vinyl cushion grip handle.

Model No.	Pull	Order No.	Price
394	5 lbs.	42228	

### Bendable Magnetic Pick-Up

- An excellent tool for retrieving steel parts from hard-to-reach places.
- High-power neodymium magnet is six times more powerful than a cobalt magnet of the same size and density.
- Knurled aluminum body with bendable 15" wire.
- Overall length is 20".
- Lifts up to 2 pounds.

Model No.	Pull	Order No.	Price
395	2 lbs.	42229	

Quality Industrial Supplies

MEIDA  
Superior Import

Starrett®

GENERAL®

The Choice Is Yours!!!