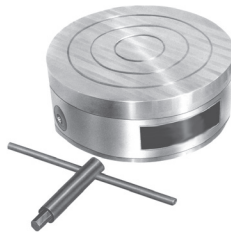
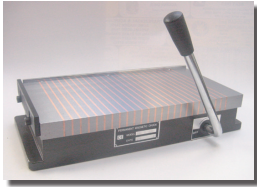


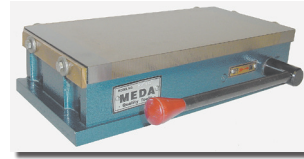
PERMANENT MAGNETIC CHUCKS - (RECTANGULAR AND ROUND)
SERIES 262:



- Made with closely spaced magnets providing full holding power over entire top plate area.
- Low height for maximum work space.
- End stop plate and hold-down clamps included with each chuck.

RECTANGULAR			ROUND		
Size	Order No.	Price	Diameter	Order No.	Price
4 x 7	1835470		6	1835006	
5 x 10	1835510		8	1835008	
6 x 12	1835612		10	1835010	
6 x 18	1835618		12	1835012	
8 x 24	1835824				

FINE POLE PERMANENT MAGNETIC CHUCKS - (RECTANGULAR AND ROUND)
SERIES 263:



Rectangular

Similar to Series 262 chucks above but with extremely close pole spacing for holding very thin and very small work pieces.

RECTANGULAR			ROUND		
Dimensions	Order No.	Price	Diameter	Order No.	Price
4 x 7	1840047		6	1840006	
5 x 10	1840510		8	1840008	
6 x 12	1840612		10	1840010	
6 x 18	1840618		12	1840012	

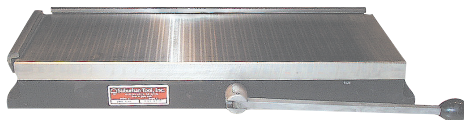
PERMANENT MAGNETIC CHUCKS
SERIES 641:



"Magnum Force™" SUBURBAN'S best chuck, combination standard and fine pole.

FEATURES

- **DUAL MAGNETS** provide 120% more power than our standard chuck and positive shut-off for easy workpiece removal.
- **CERAMIC MAGNETS** are used because they never lose their holding power.
- **SUBMERSIBLE DESIGN** for use in EDM or other fluids.
- **MAINTENANCE FREE** because chucks are sealed and lubricated.
- **RIGID WORK SURFACE** provided by laminated and brazed top plate.
- **MAXIMUM HOLDING** of both small and large parts due to combination fine/standard pole spacing
- **LOW HEIGHT** for more work clearance
- **CLAMPS INCLUDED**



Model	L	W	H	Wt.(lbs)	Order No.	Price
DMB-44	4"	4"	2-3/8"	10	6410136	
DMB-48	8"	4"	2-3/8"	20	9410162	
DMB-510	10"	5"	2-1/2"	28	6410139	
DMB-512	12"	5"	2-1/2"	35	6410163	
DMB-66	6-1/2"	6-1/2"	2-1/2"	25	6410137	
DMB-610	10"	6"	2-1/2"	35	6410164	
DMB-612	12"	6"	2-1/2"	44	6410141	
DMB-614	14"	6"	2-1/2"	52	6410165	
DMB-618	18"	6"	2-1/2"	65	6410142	
DMB-815	15"	8"	2-1/2"	73	6410166	
DMB-818	18"	8"	2-1/2"	87	6410167	
DMB-820	20"	8"	2-1/2"	102	6410168	
DMB-824	24"	8"	2-1/2"	116	6410169	
DMB-1015	15"	10"	2-1/2"	90	6410170	
DMB-1018	18"	10"	2-1/2"	101	6410171	
DMB-1020	20"	10"	2-1/2"	125	6410172	
DMB-1024	24"	10"	3-1/2"	134	6410173	
DMB-1218	18"	12"	3-1/2"	158	6410174	
DMB-1224	24"	12"	3-1/2"	192	6410175	

MAGNETIC SURFACE GRINDER CHUCKS
SERIES 641:



- Two tie down clamps, two rails and removable ON/OFF handle included.
- Ceramic magnet cannot lose magnetism and cannot be demagnetized. • Sealed against dirt and liquids, and can be used in EDM machines. • Overall height is 2-5/8"
- Standard Pole models have 1/4" poles and 1/8" separators. Fine Pole models have 1/8" poles and 1/8" separators.

STANDARD					
Model No.	L Inch	W Inch	Weight lbs.	Order No.	Price
MCB-47	7	4	19	6410076	
MCB-510	10	5	35	6410077	
MCB-612	12	6	47	6410078	
MCB-614	14	6	55	6410176	
MCB-618	18	6	70	6410079	
MCB-812	12	8	63	6410177	
MCB-815	15	8	79	6410178	
MCB-818	18	8	95	6410151	
MCB-824	24	8	126	6410080	
MCB-1015	15	10	111	6410179	
MCB-1018	18	10	134	6410180	
MCB-1024	24	10	178	6410181	
MCB-1212	12	12	107	6410182	
MCB-1218	18	12	161	6410153	
MCB-1224	24	12	213	6410183	
FINE POLE					
Model No.	L Inch	W Inch	Weight lbs.	Order No.	Price
MC-36-FP*	6	3	13	6410184	
MCB-47-FP	7	4	19	6410081	
MCB-510-FP	10	5	35	6410082	
MCB-612-FP	12	6	47	6410083	
MCB-614-FP	14	6	55	6410185	
MCB-618-FP	18	6	70	6410084	
MCB-812-FP	12	8	63	6410186	
MCB-815-FP	15	8	79	6410187	
MCB-818-FP	18	8	95	6410188	
MCB-824-FP	24	8	126	6410189	
MCB-1015-FP	15	10	111	6410190	
MCB-1018-FP	18	10	134	6410191	
MCB-1024-FP	24	10	178	6410192	
MCB-1212-FP	12	12	107	6410193	
MCB-1218-FP	18	12	161	6410194	
MCN-1224-FP	24	12	213	6410195	

*Parallel chuck only.

ROUND PERMANENT MAGNETIC CHUCKS
SERIES 641:



- Permanent, ceramic magnets for superior holding power, never lose their strength.
- Back surface of the aluminum chuck body has tapped holes and turned counterbore for convenient mounting on machines.
- All models except 5-1/4" dia. which uses the swing-type on-off method, are watertight.
- Standard Pole models have 1/4" poles and 1/8" separators. Fine Pole models have 1/8" poles and 1/8" separators.

STANDARD POLE				
Models	Diameter	Wt. lbs.	Order No.	Price
RMC-5	5-1/4	15	6410085	
RMC-6	6-1/4	17	6410086	
RMC-9	9-1/4	36	6410087	
RMC-12	12-1/4	60	6410088	
RMC-15	15-1/4	120	6410196	
RMC-16	16	96	6410089	
RMC-20	20	205	6410197	
FINE POLE				
RMC-6-FP	6-1/4	18	6410090	
RMC-8-FP	7-3/4	26	6410091	
RMC-10-FP	10	43	6410092	
RMC-12-FP	12-1/4	52	6410093	

MINI MAGNETIC CHUCK
SERIES 239:

Top and bottom surfaces are both magnetic but are separated from each other. Many uses, including converting a regular surface gage to a magnetic unit.
Dimensions: 2-1/2 wide x 3-1/2 long x 7/8 high



Order No. 1635000	Price	
-------------------	-------	--

MAGNETIC V-BLOCKS - DUAL VEE
SERIES 509:

- All working surfaces are precision ground.
- Ideal for holding, inspection and light machining.
- Accuracy of Vee is within 0.0003" (0.007mm).
- Powerful, permanent magnet is controlled by rotary ON/OFF switch.
- Supplied in fine finished wooden box.
- 6" long V-blocked is 50% longer and 100% stronger than 4" V-blocks.



Order No.	Length	Width	Height
1726012	2-3/4"(70mm)	2-1/8"(54mm)	2-7/8"(73mm)
1726006	4"(100mm)	2-3/4"(70mm)	3-3/4"(95mm)
1726212	4"(100mm)	2-3/4"(70mm)	3-3/4"(95mm)
1726220	6"(150mm)	3"(75mm)	3-3/4"(95mm)

Order No.	V-Width		Price
	Big V	Small V	
1726012 (Single)	1-1/2"(38mm)	3/4" (19mm)	
1726006 (Single)	2"(50mm)	3/4" (19mm)	
1726212 (Pair)	2"(50mm)	3/4" (19mm)	
1726220 (Single)	2-1/4"(55mm)	1" (25mm)	

MAGNETIC CHUCK, V-BLOCKS AND PARALLELS
SERIES 509:



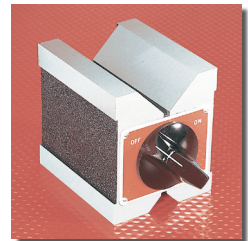
Ground all over, made of selected steel for transferring maximum holding power of magnetic chucks.

Description	Order No.	Price
Pair of small V-Blocks 1-7/8 x 2-3/8 x 2	1726001	
Individual Long V-Block 1-7/8 x 2-3/8 x 4-3/8	1726002	
Pair of Long V-Blocks 1-7/8 x 2-3/8 x 4-3/8	1726003	
Pair of Parallels 1 x 2 x 4	1726004	
Combination set of one pair small V-Blocks and one pair parallels.	1726005	

DUAL - VEE MAGNETIC V-BLOCK

STARRETT SERIES 271:

Magnetic V-blocks are designed for versatility and accuracy. All working surfaces are precision ground to provide convenient set-ups for inspection and light machining. Two precision vees will hold round stock sizes from 1/4" to 1-3/4" diameters. A powerful permanent magnet is controlled by a rotary switch. All working surfaces are heat treated for long wear and stability. Each block is 2-1/2" wide x 3" high x 3" (63 x 75 x 75mm) long. The top vee is 1-1/2" (38mm) wide at top, and 3/4" (19mm) wide at bottom with 90° included angles.



Capacity	Catalog No.	EDP No.	Price
1-3/4" (44mm)	566	63323	

DEMAGNETIZER
SERIES 264:

For quickly removing residual magnetism. Works off standard 110 Volt AC current. Unit has precision working surfaces.



Working Surfaces	Order No.	Price
6-3/4 x 4-1/4	1845000	