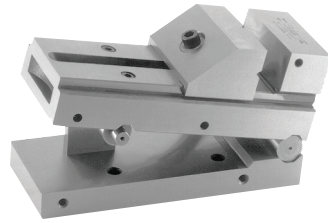


SINE VISES

SERIES 641: SUBURBAN - USA
SERIES 794: MEDA SUPERIOR IMPORT



Made of hardened steel, Suburban's vises are square and parallel to within +.0003", including vees in sliding jaw. One locking strap included with each vise.



Suburban

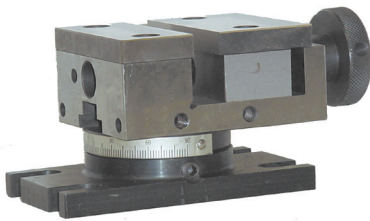


Model	Dimensions	Jaw Capacity	Weight	Center Distance of Rolls	SUBURBAN		MEDA	
					Order No.	Price	Order No.	Price
SV-337-S1	7-1/2 x 3 x 3-5/8	4-3/4	17 lbs.	5.000 within .0002	6410033		7940010	
SV-411-S2	11 x 4 x 4-5/8	7	39 lbs.	10.000 within .0002	6410034		7940011	
SV-612-S2	12 x 6 x 5-1/8	8	60 lbs.	10.000 within .0002	6410035		7940012	

PRECISION TOOLS

MINI SWIVEL PRECISION VISE

SERIES 256:



This extremely versatile vise is made to highest accuracy standards and is supplied with removable jig plates.

SPECIFICATIONS:

Jaw Width	2-3/4"
Jaw Depth (including jig plates)	1-1/8"
Jaw Opening	25/32"
Overall Height	2-5/8"
Hardness	Rc 58-62°
Tolerance	± .0004" Square and Parallel
Base plate has 4 clamping slots	
Swivels	180°

Order No. 1730004	Price	
-------------------	-------	--

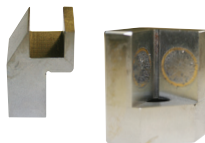
MAGNETIC EDGE FINDERS

SERIES 250:



- Conveniently attaches itself to workpiece with built-in permanent magnet.
- Precision ground, allows workpieces to be indicated within accuracy of ± .0001"
- If hole or slot is indicated to centerline of spindle the edge of workpiece will automatically be on center line.
- Avoids calculation errors by eliminating additions or subtractions.
- Two models to choose from — Slotted model to pick up single edges and Double Edge model with centering hole to pick up tangent of 2 edges.

Model SEF Single Edge Finder	
Order No. 649910	Price
Model DEF Double Edge Finder	
Order No. 649920	Price



MINI PRECISION TOOLMAKERS

INSERT VISE

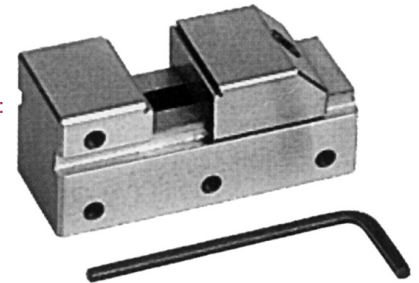
SERIES 256:



- Also used in large vises.

APPROXIMATE DIMENSIONS:

- Jaw width - 15/16"
- Jaw Opening - 1/2"
- Weight - 11oz.
- Jaw Depth - 4/10"
- Length - 2-1/2"



Order No. 1730006
Price

FINDERS (EDGE AND CENTER)

SERIES 250:



To locate work edges shoulders, grooves, center points, and scribed lines for accurate machining such as jig boring, etc. All parts hardened and ground.



Style / Type	Shank Dia.	Contact Dia.	Order No.	Price
Single End / Edge	3/8"	.200"	1700001	
Single End / Edge	1/2	.500	1700002	
Double End / Edge	1/2	.200 and .500	1700003	
Double End / Edge & Center	1/2	.200 and Ptd. contact	1700004	
Double End / Edge & Center	3/8	.200 and Ptd. Contact	1700005	
Single End / Edge	1/2	.200	1700006	
Single End / Center	3/8	Pointed Contact	1700007	
Single End / Center	1/2	Pointed Contact	1700008	
Single End / Edge	10mm	10mm	1700026	
Single End / Edge	12mm	5mm	1700077	

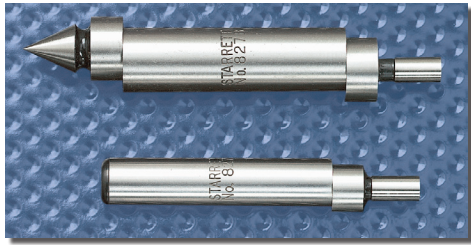
Sets	Order No.	Price
4pc Set of #s 1700001 - 1700004	1700021	
4pc Set of #s 1700005 - 1700008	1700022	
6pc Set of #s 1700001 - 1700006	1700023	
8pc Set of #s 1700001 - 1700008	1700024	

Quality Precision Tools



The Choice Is Yours!!!

EDGE FINDERS
STARRETT SERIES 827:



Work with flat, straight edges, shoulders, grooves, round work, studs, dowels, or center points and scribed lines can be accurately located with this handy tool. Double end model has a pointed contact at opposite end for locating center points and scribed lines. Body and contacts made of tool steel, hardened, ground and lapped to close tolerances for diameter and concentricity. Furnished in protective case.

Body Diameter	Contact Diameter	Description	Catalog No.	EDP No.	Price
.375"	.200"	Single End	827A	53062	
.500	.200 and pointed contact	Double End	827B	53063	
10mm	6mm	Single End	827MA	56041	

ROUND BAR CENTER FINDER
SERIES 250:



€Accurately and quickly locates center on round workpiece.
€For execution place the tool in drill chuck or collet and line up pointer with line scribed on shaft.
€Supplied with instructions



Order No.	Shank Dia.	Overall Length	Price
1700025	3/8"/9.5mm	4-1/8"/105mm	

STEREO MICROSCOPES
SERIES 510:



DELUXE FEATURES:

- Fully coated, excellent optics give an upright image over a wide field of view, sharp and clear
- Provides the original true color of the viewed object
- Accurate alignment ensures the observer fatigue-free viewing
- 45° inclined binocular head, with locked-in eyepieces.
- Left ocular-tube with diopter adjustment range of ±5mm
- Interpupillary distance adjustable between 2.16 - 2.95"
- Working distance 2.09"
- Includes paired eyecaps, a dust cover, paired clips
- Well-painted metal base
- Precise and smooth rack & pinion focus system
- Equipped with an arm stand.



Order No.	Price
5100600	

Eyepiece **WF10X**
Objective **2X / 4X**
Object Plate **White / black, glass, Ø3.74"**
Light Source **Top & bottom incandescent light**

Description	Order No.	Price
15X Eyepiece pair	5100515	
20X Eyepiece pair	5100520	

WIGGLER OR CENTER FINDER
SERIES 250:



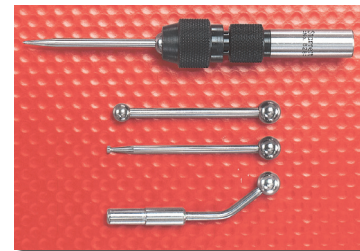
The attachments permit this tool to be used for many different applications such as: checking concentricity, establishing center distances, positioning tool spindle in relation to work surfaces, etc. Set includes body and the following interchangeable attachments:

- Ball contact (.250" dia.)
- Disc contact (.100" Dia.)
- Needle point
- Offset indicator holder

Order No.	Price
1700500	

WIGGLER OR CENTER FINDER WITH ATTACHMENTS

STARRETT
SERIES 828:



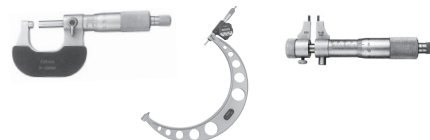
Wiggler/Center Finder, complete with Pointed Shank, Ball Contact, Disc Contact, Offset Indicator Holder, and Case.

- Furnished with offset indicator holder and chuck designed to hold all attachments.
- Four attachments adapt the tool to countless applications.
- Check run-out or concentricity; establish center distances, check straightness or alignment of flat surfaces.
- With Pointed Shank, working centers can be accurately located.

Catalog No.	EDP No.	Description	Price
S828HZ	53064	Wiggler/Center Finder, complete with case and 4 attachments	

See Our Entire Selection of:

MICROMETERS..... See index



HEIGHT GAGES See index

