

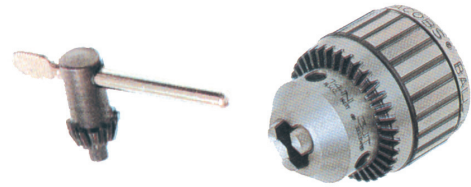
**DRILL CHUCKS**  
SERIES 319:



These chucks, robust in design, have great precision. All parts subject to wear are hardened for high accuracy and long life. Each chuck supplied with a key.

Capacity	Taper	Order No.	Price
1/64 - 1/4	J.T.1	7401610	
1/32 - 3/8	J.T.2	7402420	
1/32 - 1/2	J.T.33	7403233	
1/32 - 1/2	J.T.6	7403260	
1/32 - 5/8	J.T.3	7404030	
3/64 - 3/4	J.T.3	7404830	
3/16 - 1-1/32	J.T.4	7406440	

**BALL BEARING KEY TYPE SUPER CHUCKS**  
SERIES 319:



Suitable for heavy duty drilling use. Anti-thrust bearing increases clamping capacity. All parts hardened and precision ground.

Capacity	Taper	Order No.	Price
1/32 - 3/8	J.T.2	3192420	
1/32 - 1/2	J.T.3	3193230	
1/32 - 1/2	J.T.6	3193260	
1/32 - 3/4	J.T.4	3194840	
3/16 - 1	J.T.5	3196450	

MACHINE TOOL ACCESSORIES

**HIGH PRECISION - HEAVY DUTY PRECISION DRILL CHUCKS**  
SERIES 319:

LIMITED QUANTITIES

KEY TYPE

Model No.	Capacity (inches)	Chuck Taper No.	Order No.	Price
K5-0	1/64-5/32	0J.T.	859405	
K6-1	1/64-1/4	1J.T.	859410	
K7-1	1/64-5/16	1J.T.	859415	
K10-2	1/32-3/8	2J.T.	859420	
K10-33	1/32-3/8	33J.T.	859425	



**RÖHM**

Model No.	Capacity (inches)	Chuck Taper No.	Order No.	Price
K13-2	1/32-1/2	2J.T.	859440	
K13-6	1/32-1/2	6J.T.	859435	
K13-33	1/32-1/2	33J.T.	859430	
K16-3	1/32-5/8	3J.T.	859445	
K25-5	3/16-1	5J.T.	859455	

**DRILL CHUCK KEYS**  
SERIES 733:



- Soft steel handles limit the potential for dangerous fracturing under excessive load.
- Self-ejecting models with spring-loaded ejectors ensure key disengagement after tightening.

Model No.	Pilot Size	Order No.	Price
K0	1/8	3637	
K0M	1/8	3639	
K1	5/32	3641	
K1M	5/32	3643	
K2	1/4	3649	
K3	5/16	3651	
K3C	5/16	3653	
S-K3C*	5/16	2948	
K4	3/8	3655	
K5	7/16	3657	
K7	7/32	3659	
K30	15/64	3664	
K32	1/4	3666	
KK	9/32	30052	
S-KK*	9/32	3157	
KG1	1/4	14273	
KGA	1/4	3605	



**DRILL CHUCK KEYS**  
SERIES 653:



Model No.	"JACOBS" Key Equivalent	Order No.	Price
DCK0	K0	6530000	
DCK1	K1	6530001	
DCK30	K30	6530030	
DCK2	K2	6530002	
DCK32	K32	6530032	
DCK3	K3	6530003	
DCK4	K4	6530004	
DCK7	K7	6530007	



**WEDGE SETS**  
SERIES 733:



For removing taper mount chucks from arbor or spindles.

Set No.	Used on JACOBS Taper No.	Order No.	Price
#1 Wedge Set	1JT	13266	
#2 Wedge Set	2JT	13267	
#3 Wedge Set	3JT	13268	
#6 Wedge Set	6JT & 33	13270	



\*Self-ejecting



**DRILL CHUCKS**  
SERIES 269:



**Industrial Heavy Duty Drill Chuck**

**For Stationary and Portable Drilling Machines**

- Specially designed for stationary drilling, turning, milling and wood working machines.
- The one-piece gear ring and sleeve eliminate the possibility of teeth breaking.
- The jaws, gear ring and body are all totally hardened to avoid wear and lengthen the life of the drill chuck.
- Fits tools of up to 19mm (3/4") in diameter.
- Machine fitting via Jacobs tapers.
- Wide range of accessories to fit the drill chuck to any type of drilling machines.



**Ball-Bearing Heavy Duty Drill Chuck**

**For Production Drilling Equipment**

- Drill chuck with key for industrial applications that require the toughest machining conditions.
- Equipped with ball bearings to reduce friction in the tightening mechanism and provide a better grip on the drill shaft.
- All the pieces are hardened and ground.
- The one-piece gear ring and sleeve eliminate the possibility of teeth breakage.
- Fits tools up to 25mm (1"). Machine fitting via Jacobs tapers.



Model No.	Capacity	Mount Jacobs	Key	Order No.	Price
C13L JT2	1/32-1/2"	2 JT	K3	2690200	
C13L JT6	1/32-1/2"	6 JT	K3	2690201	
C13L JT33	1/32-1/2"	33 JT	K3	2690202	
C16L JT3	1/32-1/2"	3 JT	K3	2690203	
C19L JT3	1/8-3/4"	3 JT	K3	2690204	

Model No.	Capacity	Mount Jacobs	Key	Order No.	Price
C375BB	1/32-3/8"	2 JT	K32	2690205	
C500BB	1/32-1/2"	3 JT	K3	2690206	
C625BB	1/32-5/8"	3 JT	K4	2690207	
C750BB	1/32-3/4"	4 JT	K4	2690208	
C1000BB	3/16-1"	5 JT	K5	2690209	

**Standard Keyless Medium Duty Drill Chuck**

**For Stationary and Portable Drilling Machines**

- Drill chuck for industrial use (medium duty), available with screw fittings for professional portable drilling machines and with taper fittings for stationary drilling machines.
- Automatic fitting for efficient, fast change of tools.
- Self-tightening mechanism automatically increases the grip in proportion to the increase in torque during the drilling and avoids the tool slipping in clockwise rotation.
- Fits tools of up to 20mm (3/4") in diameter.
- Machine fitting Jacobs tapers and UNF thread fittings.



**Keyless Heavy Duty Precision Drill Chuck**

**For Stationary and Portable Drilling Machines**

- All KP model drill chucks are 100% inspected to ensure not to exceed a maximum total integrated run-out of 0.0016".
- The self-tightening feature automatically increases clamping force proportional to increased torque to prevent tool shank slippage. This is standard for right-hand rotation applications, left hand rotation is available upon request.
- The KP Series of drill chucks is well suited for use on drill presses with high accuracy: jig bore machines, horizontal and vertical milling machines, and production drilling machines.
- All components of the KP drill chuck series that are exposed to wear have been hardened to maintain accuracy and extend the tool and chuck life.
- Tool holding capacity up to 16mm (5/8") diameter.
- Ranges of 0-3mm and 0-6.7mm made from stainless steel are designed and available upon request.
- Standard mounts available in Jacobs taper and with R8 integrated R8 shank.



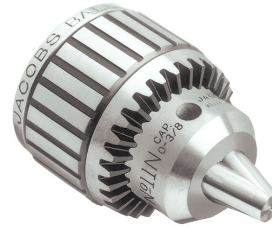
Model No.	Capacity	Mount Jacobs	Order No.	Price
K08-J2	0-5/16"	2 JT	2690210	
K10-J2	0-3/8"	2 JT	2690211	
K13-J2	1/32-1/2"	2 JT	2690212	
K13-J33	1/32-1/2"	33 JT	2690213	
K13-J6	1/32-1/2"	6 JT	2690214	
K13-1/2	1/32-1/2"	1/2-20	2690215	
K20-J3	13/64-3/4"	3 JT	2690216	

Model No.	Capacity	Mount	Order No.	Price
KP65-J1	.012 - 1/4"	1 JT	2690217	
KP100-J2	.2 - .394"	2 JT	2690218	
KP100-J33	.2 - .394"	33 JT	2690219	
KP130-J2	1/32 - 1/2"	2 JT	2690220	
KP130-J33	1/32 - 1/2"	33 JT	2690221	
KP130-J6	1/32 - 1/2"	6 JT	2690222	
KP130-R8	1/32 - 1/2"	R8 Integrated	2690223	
KP160-J6	.118 - .63"	6 JT	2690224	



While we show some of the most popular items, we can supply their entire range of products; please inquire.





## BALL BEARING SUPER CHUCKS

SERIES 733:

The Jacobs Ball Bearing Super Chuck is specifically engineered for heavy duty, close tolerance production drilling. It is adaptable to a wide range of production drilling equipment, jig borers, milling machines, lathes and radials. Utilizing a ball thrust bearing to reduce friction in the chuck closing mechanism, it permits the application of more gripping force on drill shanks to maximize drilling torque under the most demanding machining conditions.

### FEATURES:

- Ball bearing construction maximizes gripping force and drilling accuracy.
- Jaws center-ground for absolute straightness and alignment.
- Jaws specially treated to ensure extended thread life and high gripping surface hardness.
- One-piece sleeve eliminates crack between driving teeth often found in other designs.
- Through-hardened sleeve teeth plus hardened nose and keyholes provide outstanding wear resistance.
- Fluted sleeve standard.
- Each chuck 100% inspected for performance and precision.

Model No.	Capacity	Mount Jacobs	Key No.	Order No.	Price
8-1/2N	0 - 1/4	2JT*	K30	30209	
11N	0 - 3/8	2JT	K32	30215	
14N	0 - 1/2	3JT	K3	30221	
16N	1/8 - 5/8	3JT	K3	30227	
18N	1/8 - 3/4	4JT	K4	30233	
20N	3/8 - 1	5JT	K5	30239	

\*Short Style

## PLAIN BEARING CHUCKS

SERIES 733:



The Jacobs Plain Bearing Chuck is the world's most widely used for medium or heavy-duty portable, bench or floor mounted power tools. This industrial quality chuck, with fully hardened and ground working components, offers exceptionally high accuracy, gripping power and durability. Both heavy and medium duty models are available in a wide range of capacities for use on threaded and taper mounted spindles.

### FEATURES:

- Heavy and medium Duty models for threaded or taper mounting.
- Jaws center-ground for absolute straightness and alignment.
- Jaws specially treated to ensure extended thread life and high gripping surface hardness.
- One-piece sleeve eliminates crack between driving teeth often found in other designs.
- Through-hardened sleeve teeth plus hardened nose and keyholes provide outstanding wear resistance.
- Each chuck 100% inspected for performance and precision.



### TAPER MOUNTED HEAVY DUTY MODEL

Fluted sleeve standard except Model 34-33C, which is smooth and ground.

Model No.	Capacity	Mount Jacobs	Key No.	Weight oz.	Order No.	Price
3A	1/8 - 5/8	3JT	K3	32	6223	
3KD	1/8 - 5/8	3JT	K3	33	6228	
3PD	1/8 - 5/8	3JT	K3	33	6230	
34-02	0 - 1/2	2JT	K3	23	14442	
34-06	0 - 1/2	6JT	K3	24	6295	
34-33	0 - 1/2	33JT	K3	23	14445	
34-33C	0 - 1/2	33JT	K3	26	14451	
36	3/16 - 3/4	3JT	K4	45	6309	
36KD(2)	3/16 - 3/4	3JT	K4	44	14865	
36PD (3)	3/16 - 3/4	3JT	K4	45	14866	

- (1) Equipped with locking collar.
- (2) Equipped with positive drive slot.
- (3) Equipped with pin-type positive drive.

### TAPER MOUNTED MEDIUM DUTY MODEL

Fluted sleeve standard except Model 0 and 1A, which are smooth and ground.

Model No.	Capacity	Mount Jacobs	Key No.	Weight oz.	Order No.	Price
0	0 - .156	0JT	K0	2	6200	
1A	0 - 1/4	1JT	K1	5	6206	
2A	0 - 3/8	2JT	K2	13	6214	
31-01	0 - 3/8	1JT	K30	8	14697	
31-02	0 - 3/8	2JT	K30	8	14698	
33	0 - 1/2	33JT	K32	16	6279	
3326A	0 - 1/2	.6250(2)	K32	18	6291	
33KD(1)	0 - 1/2	33JT	K32	17	6281	

- (1) Equipped with positive drive slot.
- (2) Straight Mount Diameter.

### THREAD MOUNTED HEAVY DUTY MODEL

Fluted sleeve standard on all models.

Model No.	Capacity	Mount Thread	Key No.	Weight oz.	Order No.	Price
7BA 3/8	0 - 1/4	3/8-24	K7	7	6255	
32BA 1/2	0 - 3/8	1/2-20	K32	14	8859	
35B 1/2	5/32 - 5/8	1/2-20	K3	25	14723	
36B 3/4	3/16 - 3/4	3/4-16	K4	46	6316	
36B 5/8	3/16 - 3/4	5/8-16	K4	46	6314	

### THREAD MOUNTED MEDIUM DUTY MODEL

Fluted sleeve standard except Model 0B 5/16, 1B 3/8, 1B 3/8 AD, and 41BA 3/8-S, which are smooth and ground.

BA models are drilled and countersunk for retaining screw, necessary for reversible tools.

Model No.	Capacity	Mount Thread	Key No.	Weight oz.	Order No.	Price
0B 5/16	0 - .156	5/16 - 24	K0	2	6204	
1B 3/8	0 - 1/4	3/8 - 24	K1	5	6208	
2BA 3/8	0 - 3/8	3/8 - 24	K2	13	6219	
41BA 1/2	0 - 3/8	1/2 - 20	K30	8	31090	
41BA 3/8-S	0 - 3/8	3/8 - 24	K30	8	31138	
41BA 3/8	0 - 3/8	3/8 - 24	K30	8	30728	
33BA 1/2	0 - 1/2	1/2 - 20	K32	17	6287	
33BA 3/8	0 - 1/2	3/8 - 24	K32	17	6283	
3BA 5/8	0 - 1/2	5/8 - 16	K32	17	6289	

**PRECISION BALL BEARING, KEYLESS DRILL CHUCKS**

SERIES 178:

HEAVY DUTY

- Keyless Drill Chucks are precision devices designed for high accuracy applications on either conventional or CNC machines in drilling, boring & counter-boring operations.
- Tightened and released by hand.
- Chucks have self-tightening feature.



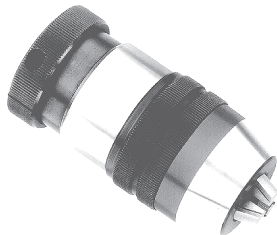
Chuck Model	Capacity		Mount	Order No.	Price
	In.	mm			
6/J1	0-1/4	0.3-6	1JT	7051064*	
13/J2	1/32-1/2	1-13	2JT	7051135	
13/J33	1/32-1/2	1-13	33JT	7051137	
13/J6	1/32-1/2	1-13	6JT	7051138	
16/J6	1/8-5/8	3-16	6JT	7051168	
16/J3	1/8-5/8	3-16	3JT	7051169	

\*LIMITED QUANTITY

**INDUSTRIAL HIGH PRECISION KEYLESS DRILL CHUCKS**

SERIES 733:

Jacobs Industrial Keyless Chucks are high precision devices specifically designed for high accuracy applications on either conventional or CNC equipment. Tightened and released by hand, they permit more rapid tooling changes to increase machining productivity. A self-tightening feature produces significantly higher gripping force to resist tool shank slippage. Precision manufactured and tested to the most exacting quality standards, Jacobs Industrial Keyless Chucks can be counted on for extremely high reliability and durability under the most demanding machining conditions.



**FEATURES:**

- Each chuck precision tested and furnished with an individualized certification number identifying its specific performance characteristics.
- Self-tightening feature automatically increases gripping force proportional to increased torque to prevent tool shank slippage.
- All components exposed to wear are completely hardened to maintain accuracy and extend chuck life.
- Jacobs taper mount permits use on a wide range of high accuracy drill presses, jig borers, milling machines and production drilling equipment.

Model No.	Capacity	Mount	Order No.	Price
65-J1	0 - 1/4	J1	931121	
80-J2S	0 - 5/16	J2S	9679	
100-J2	0 - 3/8	J2	9681	
100-J33	0 - 3/8	J33	9680	
130-J2	3/64 - 1/2	J2	9683	
130-J33	3/64 - 1/2	J33	9682	
130-J6	3/64 - 1/2	J6	9684	
160-J6	1/8 - 5/8	J6	9685	

**KEYLESS DRILL CHUCKS**

SERIES 320:



Made to highest precision standards, hardened and ground, with heavy duty ball bearings, resulting in great accuracy and long serviceable life. Drills are held securely, because grip tightens as load increases.

Model No.	Capacity	Taper	Order No.	Price
KDC14	0 - 1/4	J.T.1	7451601	
KDC38	0 - 3/8	J.T. 33	7452402	
KDC121	0 - 1/2	J.T. 33	7453233	
KDC122	0 - 1/2	J.T. 6	7453206	
KDC581	1/8 - 5/8	J.T. 3	7454003	
KDC582	1/8 - 5/8	J.T. 6	7454006	

**KEYLESS DRILL CHUCKS**

SERIES 801:



The Albrecht Chuck is "The World's Most Accurate Keyless Drill Chuck" and is being widely used today on the finest precision drilling machinery where close tolerance drilling is essential. All working parts are of alloy steel and expertly hardened making the Albrecht an ideal chuck for heavy duty drilling. The Albrecht Chuck is designed for both toolroom and production machinery where accuracy, gripping power and the keyless features are desired and is being widely used today on high accuracy drill presses, jigborers, milling machines and production drilling equipment.

Model 15-JO keyless drill chuck is especially designed for holding small diameter twist drills and has a micrometer graduation on its sleeve to facilitate the changing of the smallest drills. This model has a maximum capacity of 1/16" and a minimum capacity of .008. Users claim that the accuracy and gripping power of this fine chuck greatly reduces twist drill breakage.

Model No.	Capacity		Mount	Order No.	Price
	In.	mm			
15-JO	0 - 1/16	0-1.5	JT0	70010	
30-JO	0 - 1/8	0-3	JT0	70020	
30-J1	0 - 1/8	0-3	JT1	70030	
50-J1	0 - 3/16	0-5	JT1	70040	
65-J1	0 - 1/4	0-6.5	JT1	70050	
80-J2	0 - 5/16	0-8	JT2	70060	
100-J33	0 - 3/8	0-10	JT33	70070	
100-J2	0 - 3/8	0-10	JT2	70080	
130-J33	1/32 - 1/2	1-13	JT33	70090	
130-J2	1/32 - 1/2	1-13	JT2	70100	
130-J6	1/32 - 1/2	1-13	JT6	70110	
160-J6	1/8 - 5/8	3-16	JT6	70120	



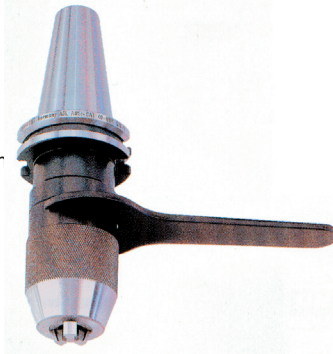
**WRENCH-LOCK V-FLANGE CHUCKS WITH INTEGRAL SHANK**

**ALBRECHT**

SERIES 801:

**FEATURES:**

- Wrench-lock chucks have integral shanks (CAT and BT tapers).
- Wrench-lock chucks incorporate wren flats for additional tightening force.
- Integral shank design provides for greater accuracy.
- Balanced to 6500 RPM
- Spanner Wrench is included.



Capacity	Shank Type	Wt. Lbs.	Chuck Model	Order No.	Price
1/32-1/2"	CAT 40	4.6	WL130-CAT40	77100	
1/16-5/8"	CAT 40	5.1	WL160-CAT40	77110	
1/16-5/8"	CAT 50	6.2	WL160-CAT50	77120	
1/32-1/2"	BT 40	4.2	WL130-BT40	77160	
1/16-5/8"	BT 40	4.6	WL160-BT40	77170	
1/16-5/8"	BT 50	8.4	WL160-BT50	77180	

**KEYLESS DRILL CHUCKS WITH INTEGRAL R8 SHANK**

**VERTEX**

**ALBRECHT**

**FEATURES:**

- Integral shank design is more compact than a combined chuck and arbor and eliminates the possibility of chuck slippage.
- Less chance of chuck run-out.
- Integral shank design provides for greater accuracy.
- Balanced.
- Keyless operation.



SERIES 801: ALBRECHT (CLASSIC PLUS)

**ALBRECHT**

Capacity	Max RPM	Wt. Lbs.	Chuck Model	Order No.	Price
1/32-1/2" (1-13mm)	7000	2.6	CP130-R8	9973040	
1/8-5/8" (3-16mm)	4000	4.2	CP160-R8	9973090	

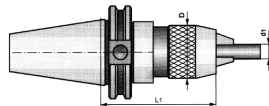
**PRECISION BALL BEARING KEYLESS DRILL CHUCKS AND INTEGRAL SHANKS**

SERIES 178:



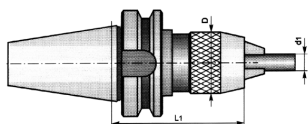
**Draw Bar Threads:**

- CAT-40 5/8" - 11
- CAT-50 1" - 8



- CAT & BT shanks are produced according to AT3 specification.
- Made of alloy forged steel for long, durable service life.
- Integral shank design is more compact than a combined drill chuck and arbor. It gives greater accuracy and rigidity.
- Keyless operations.
- Self-tightening (clockwise rotation only).

Taper No.	Capacity d <sub>1</sub>		D	L <sub>1</sub>	Order No.	Price
	Inches	mm				
CAT 40	1/32-1/2	1 - 13	2	4-15/16	7187433	
	1/8-5/8	3 - 16				
CAT 50	1/32-1/2	1 - 13	2	4-5/16	7187563	
	1/8-5/8	3 - 16				



**Draw Bar Threads:**

- BT-40 M16 x 2
- BT-50 M24 x 3

Taper No.	Capacity d <sub>1</sub>		D	L <sub>1</sub>	Order No.	Price
	in.	mm				
BT 40	1/32-1/2	1 - 13	2	3-3/4	7174433	
	1/8-5/8	3 - 16				
BT 50	1/32-1/2	1 - 13	2	4-1/8	7174563	
	1/8-5/8	3 - 16				

Series 320: VERTEX

**VERTEX**

Model No.	Capacity	Order No.	Price
Int3-R8	0-1/2" (1-13mm)	3190138	
Int6-R8	1/8-5/8" (3-16)	3190168	

**FULLY AUTOMATIC DRILL CHUCKS**

SERIES 652:



The spindle never stops. One spindle with a Wahlstrom™ Automatic Drill Chuck does the work of several. Save costly minutes in changing tools for drill press work. Multi-head drill press setups are eliminated. You can spot drill, drill and ream with one setup in your Drill Press or Milling Machine. Pull down on the knurled collar to release your drill, push up on the tapered nose to engage. Available with 3/8" and 1/2" capacities and a wide variety of shanks.



Description	3/8" Capacity		1/2" Capacity	
	Order No.	Price	Order No.	Price
Morse taper shank #1	6521931		6521941	
Morse taper shank #2	6521932		6521942	
Morse taper shank #3	-		6521943	
Jacobs female #2	6521934		6521940	
Jacobs female #33	6521933		6521953	
1/2" straight shank	6521935		6521947	
3/4" straight shank	-		6521948	
R8 shank	6521938		6521944	

**DRILL CHUCK ARBORS**  
SERIES 318: MEDA - SUPERIOR IMPORT  
SERIES 733: JACOBS



Precision ground with hardened tangs.

Morse Taper	Jacobs Taper	MEDA		JACOBS		Straight Shank	Jacobs Taper	MEDA		JACOBS	
		Order No.	Price	Order No.	Price			Order No.	Price	Order No.	Price
1	0	7350100		-		1/2	0	7353200		7348	
1	1	7350110		7299		1/2	1	7353201		7349	
1	2	7350120		9997300		1/2	2	7353220		7350	
1	3	7350130		-		1/2	3	7353230		7351	
1	33	7350133		9997304		1/2	33	7353233		7354	
1	5	7350150		-		1/2	4	7353240		-	
1	6	7350160		7303		1/2	6	7353260		7353	
2	0	7350200		-		5/8	1	7354010		7355	
2	1	7350210		7306		5/8	2	7354020		7356	
2	2	7350220		7307		5/8	3	7354030		7357	
2	3	7350230		9997308		5/8	33	7354033		7360	
2	33	7350233		9997312		5/8	4	7354040		-	
2	4	7350240		9997309		5/8	6	7354060		7359	
2	5	7350250		-		3/4	1	862115		-	
2	6	7350260		7311		3/4	2	7354820		9997361	
3	1	7350310		7313		3/4	3	7354830		7362	
3	2	7350320		7314		3/4	33	7354833		7365	
3	3	7350330		7315		3/4	4	7354840		-	
3	33	7350333		7319		3/4	6	7354860		7364	
3	4	7350340		9997316		1	1	862117		-	
3	5	7350350		7317		1	2	7356420		-	
3	6	7350360		7318		1	3	7356430		7367	
4	2	7350420		7320		1	33	7356433		-	
4	3	7350430		7321		1	4	7356440		-	
4	33	7350433		7325		1	5	7356450		-	
4	4	7350440		9997322		1	6	7356460		7368	
4	5	7350450		7323		1-1/2	3	7359630		-	
4	6	7350460		7324		1-1/2	4	7359640		-	
5	3	7350530		7327							
5	4	7350540		7328							
5	5	7350550		7329							
5	6	7350560		-							

Morse Taper	Threaded Mount	MEDA		JACOBS	
		Order No.	Price	Order No.	Price
1	1/2-20 Thread	7351132		-	
2	3/8-24 Thread	7351222		7345	
2	1/2-20 Thread	7351232		7346	
2	5/8-16 Thread	7351242		7347	

R8 Shank	Jacobs Taper	MEDA		JACOBS	
		Order No.	Price	Order No.	Price
R-8	1	7359810		-	
R-8	2	7359820		7339	
R-8	3	7359830		7340	
R-8	33	7359833		7343	
R-8	4	7359840		7341	
R-8	6	7359860		7342	

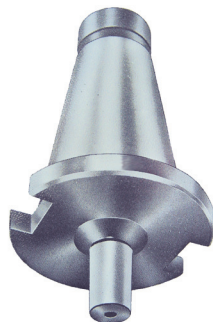


**DRILL CHUCK ARBORS - NMTB / NST TAPER**  
SERIES 178:

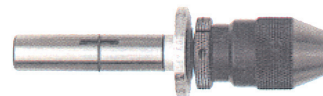


Taper Shank	Jacobs Taper	Order No.	Price
30	J1	7052031	
	J2	7052032*	
	J3	7052033	
	J33	9052033	
	J6	7052036	
40	J2	7052042	
	J3	7052043	
	J33	9052043	
	J6	7052046	
50	J3	7052053	
	J33	9052053	
	J4	7052054	
	J5	7052055	
	J6	7052056*	

\*LIMITED QUANTITY.



**SENSITIVE DRILL FEED**  
SERIES 318:



Pictured with optional drill chuck.

- 1/2" straight shank to Jacobs Taper 0.
- Finger sensitive control reduces drill breakage and amount of rejected parts when drilling small holes using high speed machinery.
- Applicable in Mills, Lathes, Drill Presses and Jig Borers.
- For use with any Drill Chucks having a JT0 back.

Order No. 7360000	Price	
-------------------	-------	--

MACHINE TOOL ACCESSORIES