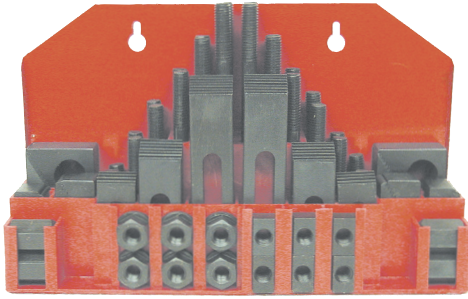


CLAMPING KITS
SERIES 436:



52 pc. set in fitted rack suitable for hanging
50 pc. set with fitted wooden container



INCLUDES

- 24 Studs (4 each: 3", 4", 5", 6", 7", 8")
- 4 Coupling nuts
- 6 Flange nuts (4 in wooden set)
- 6 T-Slot nuts
- 6 Step clamps
- 6 Pair Step blocks (1" wide)

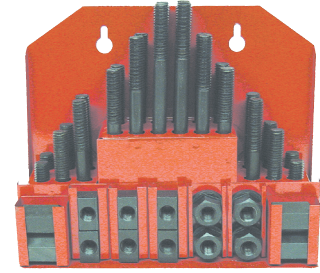
Model No.	Stud Size	Table Slot	Order No.		Price
			In Wood	In Steel	
CS001	3/8-16	7/16	-	7800001	
CS002		1/2	-	7800002	
CS003		9/16	-	7800003	
CM001	1/2-13*	9/16	-	7801001	
CM002		5/8	-	7801002	
CM003		11/16	-	7801003	
CL001	5/8-11	11/16	-	7802001	
CL002		3/4	-	7802002	
CL003		13/16	-	7802003	
CEL01	3/4-10	13/16	7753001	-	
CEL02		7/8	7753002	-	
CEL03		1	7753003	-	

*For Bridgeport® and similar machines.

T-NUT AND STUD SETS
SERIES 438:



38 pc. set in fitted rack suitable for hanging
38 pc. set with fitted wooden container.



INCLUDES

- 24 studs (4 each: 3", 4", 5", 6", 7", 8")
- 4 Coupling nuts
- 4 Flange nuts
- 6 T-Slot nuts

Model No.	Stud Size	Table Slot	Order No.		Price
			In Wood	In Steel	
TS001	3/8-16	7/16	-	7900001	
TS002		1/2	-	7900002	
TS003		9/16	-	7900003	
TM001	1/2-13*	9/16	-	7901001	
TM002		5/8	-	7901002	
TM003		11/16	-	7901003	
TL001	5/8-11	11/16	-	7902001	
TL002		3/4	-	7902002	
TL003		13/16	-	7902003	
TEL01	3/4-10	13/16	7853001	-	
TEL02		7/8	7853002	-	
TEL03		1	7853003	-	

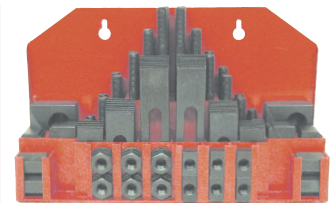
*For Bridgeport® and similar machines.

METRIC CLAMPING KITS - 58 PC.
SERIES 436:



M10 through M18 sets include a fitted rack suitable for hanging.

Table Slot	Stud Size	Order No.	Price
M10	M8-1.25	4013008	
M12	M10-1.25	4013010	
M14	M12-1.75	4013012	
M15.7		4013112	
M16	M14-2.0	4013014	
M18	M16-2.0	4013016	
M20	M18-2.5	4013018*	
M22	M20-2.5	4013020*	



* Packed with wooden container.

Quality Clamping Kits



The Choice Is Yours!!!

T-SLOT BOLTS
SERIES 711:

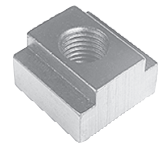
- Forged from selected steel.
- Cannot twist or jam in slots.
- National Coarse cut threads.



T-SLOT NUTS
SERIES 674:



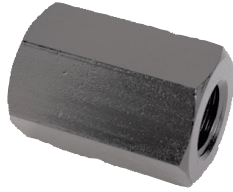
- Case Hardened Steel
- Black Oxide Finish



Length Under Head	3/8-16		1/2-13		5/8-11		3/4-10	
	Order No.	Price	Order No.	Price	Order No.	Price	Order No.	Price
1-1/2	7112415		-		-		-	
2	7112420		7113220		7114020		-	
3	7112430		7113230		7114030		7114830	
4	7112440		7113240		7114040		7114840	
5	7112450		7113250		7114050		7114850	
6	7112460		7113260		7114060		7114860	
8	-		7113280		7114080		7114880	
10	-		-		-		7114890	

Table Slot	Thread Size	Order No.	Price
7/16	3/8-16	6740437	
1/2		6740500	
9/16		6740560	
9/16	1/2-13	6740562	
5/8		6740625	
11/16		6740680	
11/16	5/8-11	6740687	
3/4		6740750	
13/16		6740800	
13/16	3/4-10	6740812	
7/8		6740875	
1		6740102	

COUPLING NUTS
SERIES 674:

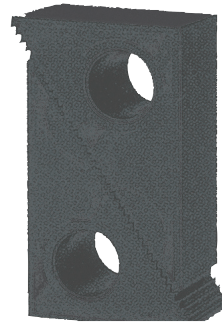


- Case Hardened Steel
- Black Oxide Finish

Couple any number of studs together to make a stud of any desired length.

Model No.	Thread Size	Order No.	Price
CN38	3/8-16	6742024	
CN12	1/2-13	6742032	
CN58	5/8-11	6742040	
CN34	3/4-10	6742048	

STEP BLOCKS (1" WIDE)
SERIES 674:

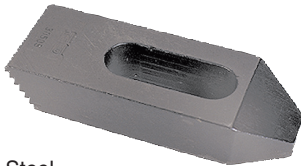


- Case Hardened Steel
- Black Oxide Finish

One step block consists of 2 pieces.

Height Range	Order No.	Price
3/4 - 1-5/8	6744000	
1-1/8 - 2-1/2	6744001	
2-1/2 - 6	6744002	

STEP CLAMPS
SERIES 674:

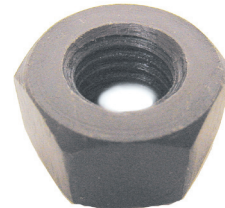


- Case Hardened Steel
- Black Oxide Finish

Teeth will match any step block.

Model No.	Stud Size	Overall Lgth	Order No.	Price
SC3825	5/16,3/8	2-1/2	6743242	
SC384	5/16,3/8	4	6743244	
SC386	5/16,3/8	6	6743246	
SC1225	1/2	2-1/2	6743322	
SC124	1/2	4	6743324	
SC126	1/2	6	6743326	
SC5825	5/8	2-1/2	6743402	
SC584	5/8	4	6743404	
SC586	5/8	6	6743406	
SC344	3/4	4	6743484	
SC346	3/4	6	6743486	
SC348	3/4	8	6743488	

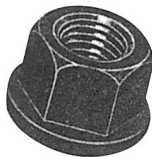
HEAVY DUTY HEX NUTS
SERIES 674:



- Case Hardened Steel
- Black Oxide Finish

Model No.	Hex Size	Thread Size	Order No.	Price
HN14	1/2	1/4-20	6747016	
HN56	9/16	5/16-18	6747020	
HN38	11/16	3/8-16	6747024	
HN12	7/8	1/2-13	6747032	
HN58	1-1/16	5/8-11	6747040	
HN34	1-1/4	3/4-10	6747048	
HN78	1-7/16	7/8-9	6747056	
HN10	1-5/8	1-8	6747064	

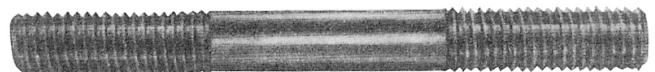
FLANGE NUTS
SERIES 674:



- Case Hardened Steel
- Black Oxide Finish

Model No.	Thread Size	Order No.	Price
FN38	3/8-16	6741024	
FN12	1/2-13	6741032	
FN58	5/8-11	6741040	
FN34	3/4-10	6741048	

CLAMPING STUDS
SERIES 674:



- Case Hardened Steel
- Black Oxide Finish

Overall Lgth	3/8-16		1/2-13		5/8-11		3/4-10	
	Order No.	Price	Order No.	Price	Order No.	Price	Order No.	Price
3	6745243		6745323		6745403		6745483	
4	6745244		6745324		6745404		6745484	
5	6745245		6745325		6745405		6745485	
6	6745246		6745326		6745406		6745486	
7	6745247		6745327		6745407		6745487	
8	6745248		6745328		6745408		6745488	

MACHINE STRAP CLAMPS
SERIES 673:



- Drop Forged Steel
- Ideal for holding down all types of work on every type of machine.
- Proper strength and stiffness to handle all types of clamping jobs.

“U” CLAMPS



Overall Lgth	Width	Thickness	Width of Slot	Order No.	Price
4	1-3/4	3/4	11/16	6730004	
6	2	7/8	11/16	6730006	
8	2-3/8	1-1/8	13/16	6730008	
10	2-3/4	1-1/4	15/16	6730010	
12	3-1/4	1-3/8	1-1/16	6730012	

GOOSE NECK CLAMPS



Overall Lgth	Width	Thickness	Width of Slot	Order No.	Price
4	1-3/8	3/4	11/16	6731004	
6	1-3/4	7/8	11/16	6731006	
8	2-1/8	1-1/8	13/16	6731008	

PLAIN CLAMPS



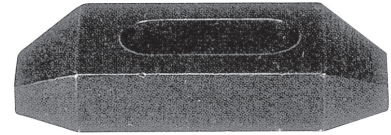
Overall Lgth	Width	Thickness	Width of Slot	Order No.	Price
4	1-5/8	3/4	11/16	6732004	
6	1-3/4	7/8	11/16	6732006	
8	2-1/8	1-1/8	13/16	6732008	

FINGER CLAMPS



Overall Lgth	Width	Thick-ness	Width of Slot	Order No.	Price
4	1-3/8	3/4	11/16	6733004	
6	1-3/4	7/8	11/16	6733006	
8	2-1/8	1-1/8	13/16	6733008	

PLAIN CLAMPS
SERIES 674:



- Case Hardened Steel
- Black Oxide Finish

Stud Size	Overall Lgth	Order No.	Price
5/16, 3/8	2-1/2	6746242	
5/16, 3/8	4	6746244	
5/16, 3/8	6	6746246	
1/2	2-1/2	6746322	
1/2	4	6746324	
1/2	6	6746326	
5/8	2-1/2	6746402	
5/8	4	6746404	
5/8	6	6746406	
3/4	4	6746484	
3/4	6	6746486	
3/4	8	6746488	

T-SLOT CLEANER
SERIES 674:



- Black Oxide Finish

Order No. 6740000	Price	\$4.00
-------------------	-------	--------

T-SLOT BRUSH

An easy way to clean chips from T-Slot tables.



Order No. 6000044	Price	\$6.85
-------------------	-------	--------

Quality Clamping Tools



The Choice Is Yours!!!



CLAMPING & SET-UP COMPONENTS



SERIES 803:

WORK HOLDING DEVICES - CLAMPS

SUPER CLAMP KITS

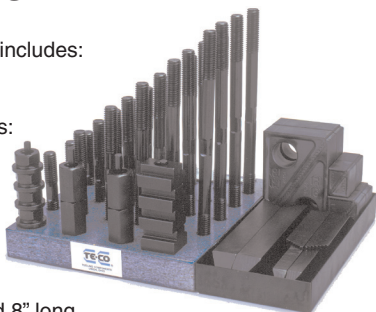
Kit Contains:

1 Step Block and Clamp Kit which includes:

- 6 Step Blocks
- 6 Serrated End Clamps

1 T-Nut and Stud Kit which includes:

- 4 Coupling Nuts
- 4 Flange Nuts
- 4 T-Slot Nuts
- 1 T-Slot Cleaner
- 24 studs - 4 each of



English Kits - 3", 4", 5", 6", 7" and 8" long

Metric Kits -

No. 68101: 80, 110, 125, 150, 175, & 200mm long.
Nos. 68102 - 06 & 68110 -12: 80, 110, 140, 150, 175 & 200mm long.
Nos. 68107-08 & 68113-15: 80, 110, 150, 175, 200, & 250mm long

1 Holder (wooden base and metal tray). *Holders are all wooden.

- Bridgeport® type milling machines use Part Nos. 20206, 20212.

Order No.	Price	Step Blk. & Clamp Kit No.	Table T-Slot Size	Stud Size	T-Slot & Stud Kit No.
With 1" Thick Step Blocks					
20201		21001	3/8	5/16-18	20601
20202		21001	7/16	3/8-16	20602
9920203		21001	1/2	3/8-16	20603
20204		21001	9/16	3/8-16	20604
9920205		21002	9/16	1/2-13	20605
9920206		21002	5/8	1/2-13	20606
9920207		21002	11/16	1/2-13	20607
9920208		21003	11/16	5/8-11	20608
9920209		21003	3/4	5/8-11	20609
9920210		21003	13/16	5/8-11	20610
With 1-1/2" Thick Step Blocks					
9920211		21004	9/16	1/2-13	20605
9920212		21004	5/8	1/2-13	20606
9920213		21004	11/16	1/2-13	20607
9920214		21005	11/16	5/8-11	20608
9920215		21005	3/4	5/8-11	20609
9920216		21005	13/16	5/8-11	20610
9920217		21006	13/16	3/4-10	20611
9920218		21006	7/8	3/4-10	20612
9920219		21006	1	3/4-10	20613
9920222		21006	1-1/16	3/4-10	20618
With 2" Thick Step Blocks					
*9920220	\$202.45	21007	1	7/8-9	20614
*20221	\$196.35	21007	1-1/16	1-8	20617
With 25mm Thick Step Blocks					
68101		21001M	10mm	M8 x 1.25	68201
68102		21001M	12mm	M10 x 1.5	68202
68103		21001M	14mm	M10 x 1.5	68203
68104		21002M	14mm	M12 x 1.75	68204
68105		21002M	16mm	M12 x 1.75	68205
68106		21002M	17mm	M12 x 1.75	68206
68107		21003M	18mm	M16 x 2.0	68207
68108		21003M	20mm	M16 x 2.0	68208
With 38mm Thick Step Blocks					
68110		21004M	14mm	M12 x 1.75	68204
68111		21004M	16mm	M12 x 1.75	68205
68112		21004M	17mm	M12 x 1.75	68206
68113		21005M	18mm	M16 x 2.0	68207
68114		21005M	20mm	M16 x 2.0	68208
68115		21006M	22mm	M20 x 2.5	68209

MACHINIST CLAMP KITS

Kit Contains:

- 4 Coupling Nuts
- 6 Flange Nuts
- 6 T-Slot Nuts
- 1 T-Slot Cleaner
- 24 Studs - 4 Each of :



English Kits - 3", 4", 5", 6", 7" and 8" long.

Metric Kits - 80mm, 110mm, 125mm, 150mm, 175mm and 200mm long

1 Step Block and Clamp Kit which includes: 6 Step Blocks, 6 Serrated End Clamps, 1 Metal Holder

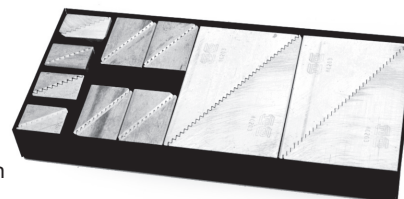
- Bridgeport® type milling machines use Part No. 20402 or Part No. 9920402.

Order No.	Price	Table T-Slot Size	Stud Size	Step Block & Clamp Kit No.	T-Slot Nut No.
With 1" Thick Step Blocks					
20412		7/16	3/8-16	21001	41404
20413		1/2	3/8-16	21001	41405
20414		9/16	3/8-16	21001	41406
20401		9/16	1/2-13	21002	41409
20402		5/8	1/2-13	21002	41410
9920402*		5/8	1/2-13	20402	41410
20403		11/16	1/2-13	21002	41412
20404		5/8	1/2-13	21002	41411
20415		11/16	5/8-11	21003	41415
20416		3/4	5/8-11	21003	41416
20417		13/16	5/8-11	21003	41417
With 25mm Thick Step Blocks					
68001		12mm	M10 x 1.5	21001M	61404
68002		14mm	M10 x 1.5	21001M	61405
68003		14mm	M12 x 1.75	21002M	61406
68004		16mm	M12 x 1.75	21002M	61407
9968005		17mm	M12 x 1.75	21002M	61408
68006		18mm	M16 x 2.0	21003M	61409
68007		20mm	M16 x 2.0	21003M	61410

* In Plastic Holder

STEP BLOCK KITS

- **Kit Contains:**
10 Steel Step Blocks
1 Holder



- See page 590 for dimensional data.
- Blocks work in conjunction with Serrated End Clamps.
- **Two halves = One Block.**

INCH

Order No.	Price	4 Each	4 Each	2 Each
20801		40102	40103	40104
20805		40105	40106	40107
20807		40108	40109	40110

METRIC

Order No.	Price	4 Each	4 Each	2 Each
9920801M		40102M	40103M	40104M
9920805M		40105M	40106M	40107M
9920807M		40108M	40109M	40110M



CLAMPING & SET-UP COMPONENTS



SERIES 803:

T-NUT & STUD KITS

Kit Contains:

- 4 Coupling Nuts, 4 Flange Nuts, 4 T-Slot Nuts, 1 T-Slot Cleaner, 24 Studs - 4 ea. of English Kits: 3", 4", 5", 6", 7" and 8" long

Metric Kits: Kit No. 68201-06: 80mm, 110mm, 140mm, 150mm, 175mm and 200mm long.

Kit No. 68207-09: 80mm, 110mm, 150mm, 175mm, 200mm, and 250mm long

- 1 Holder (wooden base and metal tray). Bridgeport® type milling machines use Part No. 20606.

Inch

Order No.	Price	T-Slot Nut No.	Table T-Slot Size	Stud Size
20601		41403	3/8	5/16-18
20602		41404	7/16	3/8-16
20603		41405	1/2	3/8-16
20604		41406	9/16	3/8-16
20605		41409	9/16	1/2-13
20606		41410	5/8	1/2-13
20607		41412	11/16	1/2-13
20608		41415	11/16	5/8-11
20609		41416	3/4	5/8-11
20610		41417	13/16	5/8-11
20611		41418	13/16	3/4-10
20612		41419	7/8	3/4-10
20613		41420	1	3/4-10
20618		41422	1-1/16	3/4-10
20614		41423	1	7/8-9
20615		41424	1-1/16	7/8-9
20616		41425	1-1/8	7/8-9
20617		41426	1-1/16	1-8

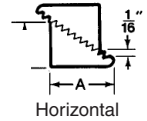


Metric

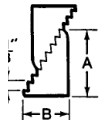
Order No.	Price	T-Slot Nut No.	Table T-Slot Size	Stud Size
68201		61403	10mm	M8 x 1.25
68202		61404	12mm	M10 x 1.5
68203		61405	14mm	M10 x 1.5
68204		61406	14mm	M12 x 1.75
68205		61407	16mm	M12 x 1.75
68206		61408	17mm	M12 x 1.75
68207		61409	18mm	M16 x 2.0
68208		61410	20mm	M16 x 2.0
68209		61411	22mm	M20 x 2.5

STEP BLOCKS

- Larger sizes have chamfered holes for ease of use.
- Blocks work in conjunction with Serrated End Clamps.
- **Two halves = One Block.**



Horizontal



Vertical

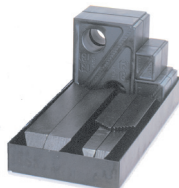
* Indicates chamfered hole

Order No.	Price	Height Adj. Range	A	B
1" Thick Step Blocks				
9940102		3/4 to 1-5/8	1-1/16	11/16
40103		1-1/8 to 2-1/2	1-39/64	1-1/16
40104*		2-1/2 to 6	3-3/4	2-15/32
1-1/2" Thick Step Blocks				
9940105		1-3/4 to 4	2-17/32	1-43/64
40106*		2-1/2 to 6	3-3/4	2-15/32
40107*		3-1/2 to 9	5-21/64	3-7/16
2" Thick Step Blocks				
40108		1-3/4 to 4	2-17/32	1-43/64
40109*		2-1/2 to 6	3-3/4	2-15/32
40110*		3-1/2 to 9	5-21/64	3-7/16
25mm Thick Step Blocks				
8040102		19mm to 41mm	1-1/16	11/16
9040103		29mm to 64mm	1-39/64	1-1/16
8040104		64mm to 152mm	3-3/4	2-15/32
38mm Thick Step Blocks				
8040105		45mm to 102mm	2-17/32	1-43/64
8040106		64mm to 152mm	3-3/4	2-15/32
9040107		89mm to 229mm	5-21/64	3-7/16
51mm Thick Step Blocks				
8040108		45mm to 102mm	2-17/32	1-43/64
8040109		64mm to 152mm	3-3/4	2-15/32
8040110		89mm to 229mm	5-21/64	3-7/16

STEP BLOCK & CLAMP KITS

Kit Contains:

- 6 Steel Step Blocks, 6 Serrated End Clamps, 1 Holder



Inch

Order No.	Price	Step Blocks 2 Each	Stud Size	Serrated End Clamps 2 Each
With 1" Thick Step Blocks				
21001		40102	5/16	30501
		40103	or	30502
		40104	3/8	30503
21002		40102	1/2	30504
		40103		30505
		40104		30506
21003		40102	5/8	30507
		40103		30508
		40104		30509
With 1-1/2" Thick Step Blocks				
21004		40105	1/2	30504
		40106		30505
		40107		30506
21005		40105	5/8	30507
		40106		30508
		40107		30509
21006		40105	3/4	30510
		40106		30511
		40107		30512
With 2" Thick Step Blocks				
21007		40108	7/8	30513
		40109	or	30514
		40110	1	30515

*Kit furnished with flat board holder

Metric

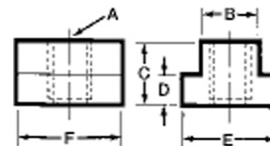
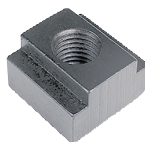
Order No.	Step Blocks 2 Each	Stud Size	Serrated End Clamps 2 Each	Price
With 25mm Thick Step Blocks				
8021001	40102M	M10 x 1.5	30501M	
	40103M		30502M	
	40104M		30503M	
8021002	40102M	M12 x 1.75	30504M	
	40103M		30505M	
	40104M		30506M	
8021003	40102M	M16 x 2.0	30507M	
	40103M		30508M	
	40104M		30509M	
With 38mm Thick Step Blocks				
8021004	40105M	M12 x 1.75	30504M	
	40106M		30505M	
	40107M		30506M	
8021005	40105M	M16 x 2.0	30507M	
	40106M		30508M	
	40107M		30509M	
8021006	40105M	M20 x 2.5	30510M	
	40106M		30511M	
	40107M		30512M	



CLAMPING & SET-UP COMPONENTS



SERIES 803:



DRIVER STUDS (METRIC)

Order No.	Thread A	B	C	Price
60201	M6 x 1.0	50	20	
60202	M6 x 1.0	65	20	
60203	M6 x 1.0	80	27	
60204	M6 x 1.0	95	27	
60206	M6 x 1.0	110	31	
60208	M6 x 1.0	140	35	
60210	M6 x 1.0	150	35	
60211	M6 x 1.0	175	35	
60213	M6 x 1.0	200	35	
60301	M8 x 1.25	50	20	
60302	M8 x 1.25	65	20	
60303	M8 x 1.25	80	27	
60304	M8 x 1.25	95	31	
60306	M8 x 1.25	110	31	
60308	M8 x 1.25	140	35	
60310	M8 x 1.25	150	35	
60311	M8 x 1.25	175	35	
60313	M8 x 1.25	200	35	
60401	M10 x 1.5	50	20	
60402	M10 x 1.5	65	20	
60403	M10 x 1.5	80	27	
60404	M10 x 1.5	95	31	
60406	M10 x 1.5	110	35	
60407	M10 x 1.5	125	35	
60408	M10 x 1.5	140	35	
60410	M10 x 1.5	150	35	
60411	M10 x 1.5	175	35	
60413	M10 x 1.5	200	35	
60501	M12 x 1.75	50	20	
60502	M12 x 1.75	65	20	
60503	M12 x 1.75	80	27	
60504	M12 x 1.75	95	31	
60506	M12 x 1.75	110	39	
60507	M12 x 1.75	125	39	
60508	M12 x 1.75	140	39	
60510	M12 x 1.75	150	39	
60511	M12 x 1.75	175	39	
60513	M12 x 1.75	200	39	
60603	M16 x 2.0	80	21	
60604	M16 x 2.0	95	31	
60606	M16 x 2.0	110	47	
60607	M16 x 2.0	125	47	
60609	M16 x 2.0	150	47	
60611	M16 x 2.0	175	47	
60613	M16 x 2.0	200	47	
60615	M16 x 2.0	250	47	
60616	M16 x 2.0	300	47	
60703	M20 x 2.5	80	27	
60704	M20 x 2.5	95	31	
60706	M20 x 2.5	110	47	
60707	M20 x 2.5	125	55	
60709	M20 x 2.5	150	55	
60711	M20 x 2.5	175	55	
60713	M20 x 2.5	200	55	
60715	M20 x 2.5	250	55	
60716	M20 x 2.5	300	55	
60805	M24 x 3.0	100	39	
60807	M24 x 3.0	125	55	
60809	M24 x 3.0	150	63	
60811	M24 x 3.0	175	63	
60813	M24 x 3.0	200	63	
60815	M24 x 3.0	250	63	
60816	M24 x 3.0	300	63	


T-SLOT NUTS

- Black Oxide Finish
- Case Hardened
- 1018 Material
- The last thread is incomplete on T-Slot Nuts to prevent the stud from turning through the bottom of the nut.
- Many sizes conform to TCMAI standards

Order No.	Price	Thread A	English* Table Slot B	Metric** Table Slot	C	D	E	F
41401		1/4-20	5/16	8	1/4	3/16	9/16	9/16
41402		1/4-20	3/8	10	3/8	15/64	9/16	9/16
41403		5/16-18	3/8	10	3/8	1/4	5/8	7/8
41433		5/16-18	7/16	12	1/2	7/32	11/16	7/8
41434		5/16-18	1/2	13	1/2	9/32	7/8	7/8
41404		3/8-16	7/16	12	1/2	7/32	11/16	7/8
41405		3/8-16	1/2	12	1/2	9/32	7/8	7/8
41406		3/8-16	9/16	15	5/8	11/32	7/8	1-1/8
41407		7/16-14	1/2	13	1/2	9/32	7/8	7/8
41408		7/16-14	1/2	13	3/8	7/32	3/4	7/8
41409		1/2-13	9/16	15	5/8	11/32	7/8	1-1/8
41410		1/2-13	5/8	16	5/8	11/32	1	1-1/8
41411		1/2-13	5/8	16	3/4	3/8	1-1/8	1-1/8
41412		1/2-13	11/16	18	3/4	7/16	1-1/8	1-1/4
41413		1/2-13	3/4	20	3/4	15/32	1-1/4	1-1/4
41415		5/8-11	11/16	18	3/4	7/16	1-1/8	1-1/4
41416		5/8-11	3/4	20	3/4	15/32	1-1/4	1-1/4
41417		5/8-11	13/16	21	1	9/16	1-1/4	1-1/2
41418		3/4-10	13/16	21	1	9/16	1-1/4	1-1/2
41419		3/4-10	7/8	23	1	9/16	1-1/2	1-1/2
41420		3/4-10	1	26	1	5/8	1-5/8	1-3/4
41421		3/4-10	1	26	1-1/2	3/4	1-3/4	1-3/4
41422		3/4-10	1-1/16	27	1-1/8	11/16	1-5/8	2
41423		7/8-9	1	26	1	5/8	1-5/8	1-3/4
41424		7/8-9	1-1/16	27	1-1/8	11/16	1-5/8	2
41425		7/8-9	1-1/8	28	1-1/2	3/4	1-3/4	2
41429		7/8-9	1-5/16	34	1-1/4	15/16	2	2
41426		1-8	1-1/16	27	1-1/8	11/16	1-5/8	2
41427		1-8	1-1/8	32	1-1/2	3/4	1-3/4	2
41428		1-8	1-1/4	32	1-1/4	7/8	2	2
41430		1-8	1-5/16	34	1-1/4	15/16	2	2
41432		1-1/4-7	1-3/8	36	1-3/4	1-1/8	2-1/2	2-1/2
Order No.	Price	Thread A	Metric* Table Slot B	English** Table Slot	C	D	E	F
61401		M6 x 1.0	8	5/16	10	6	14	19
61402		M6 x 1.0	10	7/16	11	6	16	22
61403		M8 x 1.25	10	7/16	11	6	16	22
61404		M10 x 1.5	12	1/2	13	7	19	22
61405		M10 x 1.5	14	9/16	16	9	22	29
61406		M12 x 1.75	14	9/16	16	9	22	29
61407		M12 x 1.75	16	5/8	16	9	25	29
61408		M12 x 1.75	17	11/16	19	11	29	32
61409		M16 x 2.0	18	3/4	19	11	29	32
9961410		M16 x 2.0	20	13/16	25	14	32	38
61411		M20 x 2.5	22	7/8	25	14	35	38
61412		M24 x 3.0	27	1-1/16	29	18	41	51
61413		M24 x 3.0	33	1-5/16	32	24	51	51

* T-Slot Nuts are undersized to fit machine table slot.
** English T-Slot Nut will fit this size metric machine T-slot



While we show only the most popular  items we can supply their entire range of products; please inquire.

WORK HOLDING DEVICES - CLAMPS



CLAMPING & SET-UP COMPONENTS

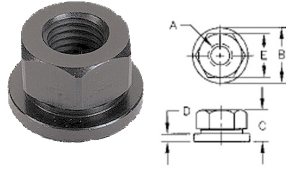


SERIES 803:

WORK HOLDING DEVICES - CLAMPS

FLANGE NUTS

- When used with Spherical Washers Flange Nuts will equalize thread loads
Black Oxide Finish
Case Hardened
12L14 Material



- Available in Coarse or Fine Threads
- Many sizes conform to TCMAI standards

INCH

Order No.	Price	Thread A	B	C	D	E
41601		1/4-20	5/8	5/16	3/32	1/2
41602		5/16-18	3/4	3/8	1/8	9/16
41603		3/8-16	7/8	1/2	1/8	11/16
41604		7/16-14	1	9/16	5/32	3/4
41605		1/2-13	1-1/8	11/16	3/16	7/8
41606		5/8-11	1-3/8	13/16	3/16	1-1/16
41607		3/4-10	1-5/8	1	1/4	1-1/4
41608		7/8-9	1-3/4	1-1/8	1/4	1-7/16
41609		1-8	2	1-1/4	1/4	1-5/8
41611		1-1/4-7	2-1/2	1-1/4	1/4	1-13/16
41701		1/4-28	5/8	5/16	3/32	1/2
41702		5/16-24	3/4	3/8	1/8	9/16
41703		3/8-24	7/8	1/2	1/8	11/16
41704		7/16-20	1	9/16	5/32	3/4
41705		1/2-20	1-1/8	11/16	3/16	7/8
41706		5/8-18	1-3/8	13/16	3/16	1-1/16
41707		3/4-16	1-5/8	1	1/4	1-1/4
41708		7/8-14	1-3/4	1-1/8	1/4	1-7/16
41709		1-14	2	1-1/4	1/4	1-5/8

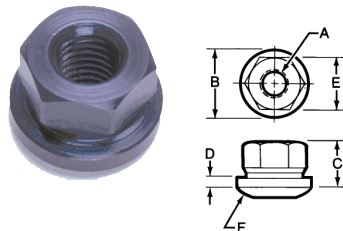
METRIC

Order No.	Thread A	B	C	D	E	Price
61601	M6 x 1.0	16	8	2	10	
61602	M8 x 1.25	19	10	2.5	13	
61603	M10 x 1.5	22	13	3	17	
61604	M12 x 1.75	27	17	4	19	
61605	M16 x 2.0	33	21	5	24	
61606	M20 x 2.5	40	25	6	30	
61607	M24 x 3.0	49	32	7	36	

SPHERICAL FLANGE NUTS

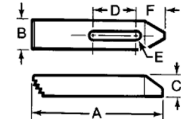
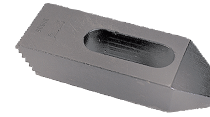
Black Oxide Finish
Case Hardened
12L14 Material

- Many sizes conform to TCMAI standards
- When used with spherical washers flange nuts will equalize thread loads.



Order No.	Price	Thread A	B	C	D	E	F
41801		1/4-20	5/8	5/16	3/32	1/2	3/4
41802		5/16-18	3/4	3/8	1/8	9/16	1-1/4
41803		3/8-16	7/8	1/2	1/8	11/16	1-1/4
41804		7/16-14	1	9/16	5/32	3/4	1-1/2
41805		1/2-13	1-1/8	11/16	3/16	7/8	1-1/2
41806		5/8-11	1-3/8	13/16	3/16	1-1/16	1-3/4
41807		3/4-10	1-5/8	1	1/4	1-1/4	2-1/4
41808		7/8-9	1-3/4	1-1/8	1/4	1-7/16	2-1/2
41809		1-8	2	1-1/4	1/4	1-5/8	2-3/4
41811		1-1/4-7	2-1/2	1-1/4	1/4	1-13/16	3

SERRATED END CLAMPS

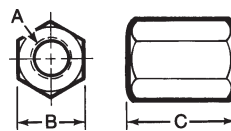
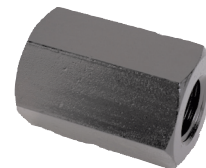


Order No.	Price	A	B	C	D	Stud Size E	F
30501		2-1/2	1	1/2	13/16	5/16 or 3/8	27/32
30502		4	1	5/8	1-7/16	5/16 or 3/8	1-1/32
30503		6	1-1/8	3/4	2-3/16	5/16 or 3/8	1-5/32
30504		2-1/2	1-1/8	1/2	11/16	1/2	29/32
30505		4	1-1/4	3/4	1-5/16	1/2	1-5/32
30506		6	1-1/4	7/8	2-1/16	1/2	1-9/32
30507		2-1/2	1-1/4	5/8	9/16	5/8	31/32
30508		4	1-1/2	3/4	1-3/16	5/8	1-9/32
30509		6	1-1/2	7/8	1-15/16	5/8	1-13/32
30510		4	1-1/2	3/4	1-1/16	3/4	1-11/32
30511		6	1-1/2	1	1-15/16	3/4	1-15/32
30512		8	1-3/4	1-1/8	2-3/16	3/4	1-29/32
30513		6	2	1-1/4	1-11/16	7/8 or 1	1-27/32
30514		8	2	1-3/8	1-15/16	7/8 or 1	2-1/32
30515		10	2	1-1/2	2-15/16	7/8 or 1	2-1/32

Order No.	A	B	C	D	Stud Size E	F	Price
8030501	64	25	13	21	M6-M8-M10	21	
8030502	102	25	16	37	M6-M8-M10	26	
8030503	152	29	19	56	M6-M8-M10	29	
8030504	64	29	13	18	M12	23	
8030505	102	32	16	33	M12	29	
8030506	152	32	19	52	M12	29	
8030507	64	32	16	14	M16	25	
8030508	102	38	19	30	M16	31	
8030509	152	38	22	49	M16	34	
8030510	102	38	19	27	M20	33	
8030511	152	38	25	49	M20	37	
8030512	203	45	29	56	M20	48	
9030513	152	51	32	43	M24	44	
8030514	203	51	35	49	M24	52	
9030515	254	51	38	75	M24	52	

COUPLING (EXTENSION) NUTS

- Black Oxide Finish
Case Hardened
1117 Material
Coupling Nuts can be used to join two or more studs for a desired length
- Many sizes conform to TCMAI standards



METRIC

Order No.	Price	Thread A	B	C
61501		M6 x 1.00	13	16
61502		M8 x 1.25	14	19
9961503		M10 x 1.5	16	24
61504		M12 x 1.75	22	32
61505		M16 x 2.0	27	40
61506		M20 x 2.5	32	51
9961507		M24 x 3.0	38	64

INCH

Order No.	Price	Thread A	B	C
41501		1/4-20	1/2	5/8
41502		5/16-18	9/16	7/8
41503		3/8-16	11/16	1
41504		7/16-14	3/4	1-1/4
41505		1/2-13	7/8	1-1/4
41506		5/8-11	1-1/16	1-5/8
41507		3/4-10	1-1/4	1-7/8
41508		7/8-9	1-7/16	2-1/4
41509		1-8	1-5/8	2-1/2



CLAMPING & SET-UP COMPONENTS



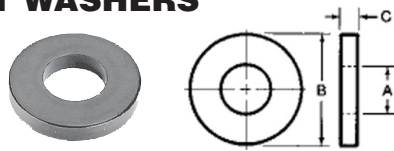
SERIES 803:

WORK HOLDING DEVICES - CLAMPS

HARDENED FLAT WASHERS

Black Oxide Finish
Case Hardened
C1010 Material

- Many sizes conform to TCMAI standards



INCH

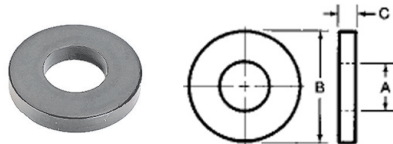
Order No.	Price	Stud Size	A	B	C
42600		3/16	13/64	1/2	3/32
42601		1/4	9/32	5/8	1/8
42602		5/16	11/32	3/4	1/8
42603		3/8	13/32	7/8	1/8
42604		7/16	15/32	1	1/8
42605		1/2	17/32	1-1/8	1/8
42606		5/8	21/32	1-3/8	1/8
42607		3/4	25/32	1-5/8	5/32
42608		7/8	29/32	1-3/4	5/32
42609		1	1-1/32	2	3/16
42610		1-1/8	1-5/32	2-1/4	7/32
42611		1-1/4	1-9/32	2-1/2	9/32
42612		#4	1/8	5/16	5/64
42613		#6	5/32	3/8	5/64
42614		#8	3/16	7/16	5/64

METRIC

Order No.	Stud Size	A	B	C	Price
63601	M6	7	16	3	
63602	M8	9	19	3	
63603	M10	11	25	3	
63605	M12	13	28	3	
63606	M16	17	35	3	
63608	M20	22	44	5	
63609	M24	26	51	4	

HEAVY DUTY HARDENED FLAT WASHERS

Black Oxide Finish
Case Hardened
C1010 Material



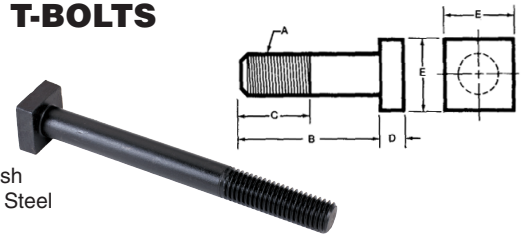
INCH

Order No.	Price	Stud Size	A	B	C
42619		1/4	9/32	5/8	3/16
42620		5/16	11/32	3/4	3/16
42621		3/8	13/32	7/8	3/16
42623		1/2	17/32	1-1/8	3/16
42624		5/8	21/32	1-3/8	3/16
42625		3/4	25/32	1-5/8	1/4
42626		7/8	29/32	1-3/4	1/4
42627		1	1-1/32	2	9/32

METRIC

Order No.	Stud Size	A	B	C	Price
963619	M6	7	16	5	
963620	M8	9	19	5	
963621	M10	11	25	5	
63623	M12	13	28	5	
63624	M16	17	35	5	
63626	M20	22	44	6	
63627	M24	26	51	7	

TUGGER® T-BOLTS



Black Oxide Finish
Medium Carbon Steel
Heat Treated
Thread class 2A UNC

Order No.	Price	Thread A	B	C	D	E	Table Slot
46201		3/8-16	1-1/2	1	1/4	11/16	3/8
46202		3/8-16	2	1-1/2	1/4	11/16	3/8
46203		3/8-16	2-1/2	2	1/4	11/16	3/8
46204		3/8-16	3	2	1/4	11/16	3/8
42605		3/8-16	3-1/2	2	1/4	11/16	3/8
46206		3/8-16	4	2	1/4	11/16	3/8
46207		3/8-16	5	2	1/4	11/16	3/8
46208		3/8-16	6	2	1/4	11/16	3/8
46209		3/8-16	7	2	1/4	11/16	3/8
46210		3/8-16	8	2	1/4	11/16	3/8
46401		1/2-13	1-1/2	1	5/16	7/8	1/2
46402		1/2-13	2	1-1/2	5/16	7/8	1/2
46403		1/2-13	2-1/2	2	5/16	7/8	1/2
46404		1/2-13	3	2	5/16	7/8	1/2
46405		1/2-13	3-1/2	2	5/16	7/8	1/2
46406		1/2-13	4	2	5/16	7/8	1/2
46407		1/2-13	5	2	5/16	7/8	1/2
46408		1/2-13	6	2	5/16	7/8	1/2
46409		1/2-13	7	2	5/16	7/8	1/2
46410		1/2-13	8	2	5/16	7/8	1/2
46411		1/2-13	10	2	5/16	7/8	1/2
46412		1/2-13	12	2	5/16	7/8	1/2
46501		5/8-11	1-1/2	1	13/32	1-1/8	5/8
46502		5/8-11	2	1-1/2	13/32	1-1/8	5/8
46503		5/8-11	2-1/2	2	13/32	1-1/8	5/8
46504		5/8-11	3	2	13/32	1-1/8	5/8
46505		5/8-11	3-1/2	2	13/32	1-1/8	5/8
46506		5/8-11	4	2	13/32	1-1/8	5/8
46507		5/8-11	5	2	13/32	1-1/8	5/8
46508		5/8-11	6	2	13/32	1-1/8	5/8
46509		5/8-11	7	2	13/32	1-1/8	5/8
46510		5/8-11	8	2	13/32	1-1/8	5/8
46511		5/8-11	10	2	13/32	1-1/8	5/8
46512		5/8-11	12	2	13/32	1-1/8	5/8
46601		3/4-10	3	2	17/32	1-5/16	3/4
46602		3/4-10	3-1/2	2	17/32	1-5/16	3/4
46603		3/4-10	4	2	17/32	1-5/16	3/4
46604		3/4-10	5	2	17/32	1-5/16	3/4
46605		3/4-10	6	2	17/32	1-5/16	3/4
46606		3/4-10	7	2	17/32	1-5/16	3/4
46607		3/4-10	8	2	17/32	1-5/16	3/4
46608		3/4-10	10	2	17/32	1-5/16	3/4
46609		3/4-10	12	2	17/32	1-5/16	3/4



While we show only the most popular

TE-CO items we can supply their entire range of products. See our website or inquire.



CLAMPING & SET-UP COMPONENTS



SERIES 803:

TUGGER® T-SLOT BOLT KITS



SHORT SERIES

Kit Contains:

- 24 T-Slot Bolts - 4 Each of 1-1/2", 2", 2-1/2", 3", 3-1/2" and 4" Long.
- 8 Flange Nuts
- 1 T-Slot Cleaner
- 1 Holder

For material information see individual components.

Order No.	Price	Thread Size	Table Slot	4 Each O.A.L.
21330		3/8-16	3/8	1-1/2 thru 4
21332		1/2-13	1/2	1-1/2 thru 4
21334		5/8-11	5/8	1-1/2 thru 4
21331		3/8-16	3/8	3 thru 8
21333		1/2-13	1/2	3 thru 8
21335		5/8-11	5/8	3 thru 8
21336		3/4-10	3/4	3 thru 8

LONG SERIES

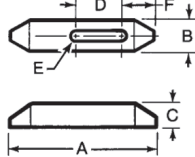
- 1 Holder
- Kit Contains:**
- 24 T-Slot Bolts - 4 Each of 3", 4", 5", 6", 7" and 8" Long
- 8 Flange Nuts
- 1 T-Slot Cleaner

For material information see individual components.

PLAIN CLAMPS



• Material: 1018 Steel



- Tapered nose allows clamping in small areas.
- Case Hardened
- Black Oxide Finish.

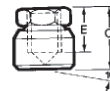
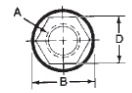
Order No.	Price	A	B	C	D	Stud Size E	F
30401		2-1/2	1	1/2	13/16	5/16 and 3/8	27/32
30402		4	1	5/8	1-7/16	5/16 and 3/8	1-1/32
30403		6	1-1/8	3/4	2-3/16	5/16 and 3/8	1-5/32
30404		2-1/2	1-1/8	1/2	11/16	1/2	29/32
30405		4	1-1/4	3/4	1-5/16	1/2	1-5/32
30406		6	1-1/4	7/8	2-1/16	1/2	1-9/32
30407		2-1/2	1-1/4	5/8	9/16	5/8	31/32
30408		4	1-1/2	3/4	1-3/16	5/8	1-9/32
30409		6	1-1/2	7/8	1-15/16	5/8	1-13/32
9930410		4	1-1/2	3/4	1-1/16	3/4	1-11/32
30411		6	1-1/2	1	1-15/16	3/4	1-15/32
30412		8	1-3/4	1-1/8	2-3/16	3/4	1-29/32
30413		6	2	1-1/4	1-11/16	7/8 and 1	1-27/32
30414		8	2	1-3/8	1-15/16	7/8 and 1	2-1/32
30415		10	2	1-1/2	2-15/16	7/8 and 1	2-1/32

METRIC

Order No.	A	B	C	D	Stud Size E	F	Price
8030401	64	25	13	21	M6-M8-M10	21	
8030402	102	25	16	37	M6-M8-M10	26	
9030403	152	29	19	56	M6-M8-M10	29	
8030404	64	29	13	18	M12	23	
9030405	102	32	16	33	M12	29	
8030406	152	32	19	52	M12	29	
9030407	64	32	16	14	M16	25	
8030408	102	38	19	30	M16	31	
8030409	152	38	22	49	M16	34	
8030410	102	38	19	27	M20	33	
8030411	152	38	25	49	M20	37	
8030412	203	45	29	56	M20	48	
8030413	152	51	32	43	M24	44	
8030414	203	51	35	49	M24	52	
8030415	254	51	38	75	M24	52	

TOGGLE PADS

- Material: 12L14 Steel
- Black oxide finish
- Case Hardened
- Many sizes conform to TCMAI standards
- Pad swivels 10 degrees from vertical in any direction.
- Assures positive gripping
- Use when high clamping pressures are required



Order No.	Price	Thread A	B	C	D	E
44302		1/4-20	5/8	5/8	1/2	13/32
44303		5/16-18	11/16	11/16	9/16	7/16
44304		3/8-16	3/4	3/4	5/8	1/2
44305		1/2-13	7/8	1	3/4	17/32
44306		5/8-11	1	1-1/16	7/8	9/16
44307		3/4-10	1-1/4	1-5/16	1-1/16	3/4
44308		1-8	1-5/8	1-11/16	1-3/8	1

LEVELING PADS

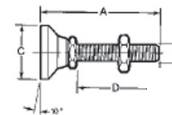
- Material: 12L14 Steel
- Black oxide finish
- Case hardened
- Many sizes conform to TCMAI standards
- Pad swivels 10 degrees from vertical in any direction.
- Large pad diameter provides solid support
- Use as a foot for machine tools, benches, electronic racks, etc.
- Special sizes quoted on request.



Order No.	Price	Thread A	B	C	D	E	Load Limits
44401		3/8-16	1-1/4	7/8	5/8	3/16	3750 lbs.
44402		1/2-13	1-7/8	1-1/8	3/4	1/4	5000 lbs.
44403		5/8-11	2-1/2	1-1/4	7/8	5/16	6000 lbs.
44404		3/4-10	3	1-1/2	1-1/16	1/2	7200 lbs.

LEVELING PAD & STUD ASSEMBLY

- Material: 12L14 Steel with Zinc Plating
- Zinc coating deters rust
- Integral stud and hardened ball swivels 10 degrees from vertical in any direction
- Swivel action facilitates leveling of machine tools, benches, electronic racks, etc. - even on rough surfaces.



Order No.	Price	A	Thread B	C	Load D	Limits
44450		2-7/8	3/8-16	1-1/4	2-1/32	3750
44451		3-1/8	1/2-13	1-7/8	1-31/32	5000
44452		3-1/4	5/8-11	2-1/2	1-15/16	6000
44453		3-1/2	3/4-10	3	1-31/32	7200

WORK HOLDING DEVICES - CLAMPS



CLAMPING & SET-UP COMPONENTS

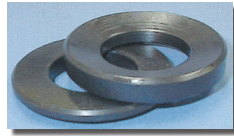


SERIES 803

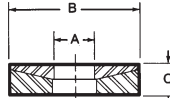
WORK HOLDING DEVICES - CLAMPS

SPHERICAL WASHERS

Black Oxide Finish
Case Hardened
Material: 12L14 steel
Tops and bottoms also sold separately
Reduces stress on threads
Bottom Washer can be used with Spherical Flange Nuts



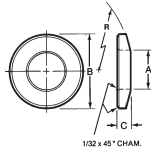
- Compensates for slight misalignment between the workpiece and strap clamp.
- Many sizes conform to TCMAI standards.



ASSEMBLIES

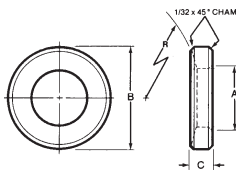
Steel Part No.	Price	A Male Part No.	B Female Part No.	Stud Size	C	Total Deg. Rotation
42701		42721	42741	3/16 and 1/4	3/16	8 and 5
42702		42722	42742	5/16 and 3/8	1/4	5 and 3
42703		42723	42743	7/16 and 1/2	5/16	4 and 2
42704		42724	42744	5/8	5/16	2
42705		42725	42745	3/4	3/8	3
42706		42726	42746	7/8	3/8	3
42707		42727	42747	1	1/2	3
42708		42728	42748	1-1/8	1/2	3
42709		42729	42749	1-1/4	1/2	3
42710		42730	42750	1-1/2	1/2	3

Male (TOP) SPHERICAL WASHERS



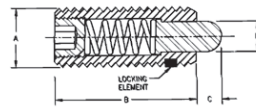
Steel Order No.	Stud Size	A	B	+0.000 -0.005 C	Rad. R	Price
42721	3/16 and 1/4	9/32	5/8	.120	3/4	
42722	5/16 and 3/8	13/32	7/8	.130	1-1/4	
42723	7/16 and 1/2	17/32	1-1/8	.188	1-1/2	
42724	5/8	21/32	1-3/8	.188	1-3/4	
42725	3/4	25/32	1-5/8	.219	2-1/4	
42726	7/8	15/16	1-3/4	.240	2-1/2	
42727	1	1-1/16	2	.330	2-3/4	
42728	1-1/8	1-3/16	2-1/4	.281	3	
42729	1-1/4	1-5/16	2-1/2	.312	3	
42730	1-1/2	1-9/16	2-7/8	.350	3	

FEMALE (BOTTOM) SPHERICAL WASHERS



Steel Order No.	Stud Size	A	B	+0.000 -0.005 C	Rad. R	Price
42741	3/16 and 1/4	5/16	5/8	.120	3/4	
42742	5/16 and 3/8	7/16	7/8	.156	1-1/4	
42743	7/16 and 1/2	9/16	1-1/8	.188	1-1/2	
42744	5/8	11/16	1-3/8	.219	1-3/4	
42745	3/4	13/16	1-5/8	.265	2-1/4	
42746	7/8	1	1-3/4	.240	2-1/2	
42747	1	1-1/8	2	.290	2-3/4	
42748	1-1/8	1-1/4	2-1/4	.350	3	
42749	1-1/4	1-3/8	2-1/2	.375	3	
42750	1-1/2	1-5/8	2-7/8	.390	3	

STANDARD SPRING PLUNGERS
Heavy End Forces



- Steel Plunger has Carbon, Case Hardened Nose and Black Oxide finish on bodies.
- Nylon Locking element is standard on all sizes.
- Many sizes conform to TCMAI standards.

INCH

Steel Order No.	Price	End Force lbs.		Thread A	B	C	+0.000 -0.001 D
		Initial	Final				
52001		1.5	4.5	6-32	17/32	0.062	0.046
9952002		1.0	1.6	6-32	3/8	0.062	0.046
52003		2.7	7.3	8-32	5/8	0.093	0.070
52004		2.9	11.1	10-32	3/4	0.125	0.093
52005		3.0	13.0	1/4-20	1	0.187	0.119
52006		3.0	13.0	1/4-28	1	0.187	0.119
52007		2.0	9.0	1/4-20	3/4	0.125	0.119
52008		3.0	15.0	5/16-18	1	0.187	0.135
52009		5.5	14.5	3/8-16	1-1/8	0.187	0.186
52010		6.6	17.4	1/2-13	1-1/4	0.250	0.248
52011		10.5	25.5	5/8-11	1-1/2	0.312	0.310
9952012		6.7	37.3	3/4-10	1-3/4	0.312	0.374
52013		16.0	68.0	1-8	2-13/32	0.500	0.499

METRIC

Steel Part No.	End Force N* (lbs.)		Thread A	B mm	C mm	+0.000mm -0.025mm D	Price
	Initial	Final					
9963701	18 (4.05)	50 (11.24)	M6 x 1.0	20	2.5	2.7	
63702	25 (5.62)	70 (15.74)	M8 x 1.25	22	3	3.5	
63703	25 (5.62)	70 (15.74)	M10 x 1.50	22	3	4	
9963704	45 (10.12)	110 (24.73)	M12 x 1.75	28	4	6	
9963705	7 (1.57)	20 (4.5)	M6 x 1.0	20	2.5	2.7	
63706	9 (2.02)	35 (7.87)	M8 x 1.25	22	3	3.5	
9963707	9 (2.02)	35 (7.87)	M10 x 1.50	22	3	4	
9963708	10 (2.25)	55 (12.36)	M12 x 1.75	28	4	6	

* Newton

SPRING AND BALL PLUNGER WRENCHES



- Designed to eliminate excessive spring compression during installation and removal of spring and ball plungers.

Order No.	Price	Inches	mm
9953001		6-32	
53002		8-32	M4
9953003		10-32	M5
9953004		1/4-20	M6
9953005		5/16-18	M8
53006		3/8-16	M10
53007		1/2-13	M12
53008		5/8-11	
53009		3/4-10	
53010		1-8	

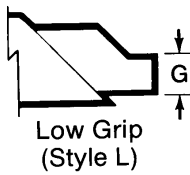


CLAMPING & SET-UP COMPONENTS

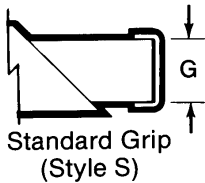
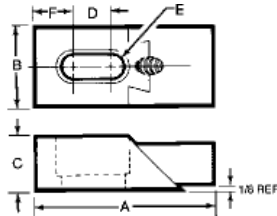
SERIES 803



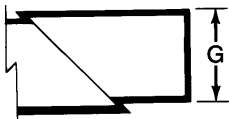
NUZZLER® EDGE CLAMPS



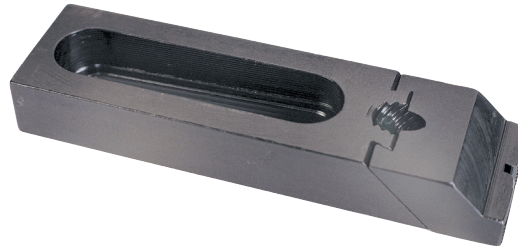
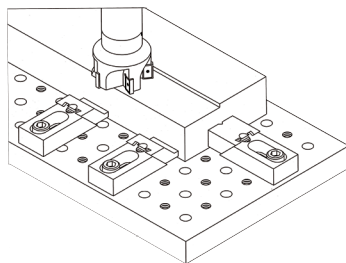
Low Grip
(Style L)



Standard Grip
(Style S)



High Grip
(Style H)



- Clamp material: 1018 steel
- Black oxide finish
- Edge Clamps feature a double action, adjustable nose which exerts clamping pressures both downward and inward through a 45° angle.
- Noses have serrations for better gripping of non-finished or semi-finished workpieces.
- Tapered slots prevent clamp from sliding off the workpiece during tightening.
- Length "A" is calculated with nose raised 1/8".
- The Low Profile Nose provides a greater machining clearance.
- Optional removable aluminum nose cap prevents damage to your workplace.

Order No.	Price	A	B	C	D	E	F	Nose Style	G	Wrench Size
33817		1-7/8	1	5/8	1/4	5/16	13/32	L	1/8	5/32
33819		2-3/8	1	5/8	3/4	5/16	5/16	L	1/8	5/32
33821		2-7/8	1	5/8	1-1/4	5/16	5/16	L	1/8	5/32
33801		2-5/16	1-1/4	5/8	3/8	3/8	7/16	L	1/4	3/16
33890		2-3/4	1-1/4	5/8	13/16	3/8	1/2	L	1/4	3/16
33803		4-1/8	1-1/4	5/8	2	3/8	11/16	L	1/4	3/16
33892		4-11/16	1-1/4	5/8	2-3/16	3/8	15/16	L	1/4	3/16
33805		3-5/16	1-1/2	3/4	3/4	1/2	11/16	L	3/8	1/4
33807		5-3/16	1-1/2	3/4	2-1/2	1/2	5/8	L	3/8	1/4
33823		3-7/8	1-1/2	7/8	1-1/4	1/2	1/2	L	1/4	1/4
33825		5-5/16	1-1/2	7/8	2	1/2	7/8	L	1/4	1/4
33827		7-1/4	1-1/2	7/8	3	1/2	1-3/8	L	1/4	1/4
33809		5-13/16	1-1/2	1-1/4	2-1/4	1/2	1-1/16	L	3/8	1/4
33812		7-1/8	1-1/2	1-1/4	3-5/16	1/2	1-3/16	L	3/8	1/4
33710		3-5/16	1-1/2	3/4	5/8	5/8	11/16	L	3/8	1/4
33712		5-3/16	1-1/2	3/4	2-1/2	5/8	5/8	L	3/8	1/4
33714		3-7/8	1-1/2	7/8	1-1/4	5/8	1/2	L	1/4	1/4
33716		5-5/16	1-1/2	7/8	2	5/8	7/8	L	1/4	1/4
33829		5-1/4	2	1-1/4	1-3/8	3/4	27/32	L	3/8	5/16
33818		1-7/8	1	5/8	1/4	5/16	13/32	S	5/8	5/32
33820		2-3/8	1	5/8	3/4	5/16	5/16	S	5/8	5/32
33822		2-7/8	1	5/8	1-1/4	5/16	5/16	S	5/8	5/32
33802		2-5/16	1-1/4	5/8	3/8	3/8	7/16	S	5/8	3/16
33891		2-3/4	1-1/4	5/8	13/16	3/8	1/2	S	5/8	3/16
33804		4-1/8	1-1/4	5/8	2	3/8	11/16	S	5/8	3/16
33893		4-11/16	1-1/4	5/8	2-3/16	3/8	15/16	S	5/8	3/16
33806		3-5/16	1-1/2	3/4	3/4	1/2	11/16	S	3/4	1/4
33808		5-3/16	1-1/2	3/4	2-1/2	1/2	5/8	S	3/4	1/4
33824		3-7/8	1-1/2	7/8	1-1/4	1/2	1/2	S	7/8	1/4
33826		5-5/16	1-1/2	7/8	2	1/2	7/8	S	7/8	1/4
33828		7-1/4	1-1/2	7/8	3	1/2	1-3/8	S	7/8	1/4
33810		5-13/16	1-1/2	1-1/4	2-1/4	1/2	1-1/16	S	3/4	1/4
33813		7-1/8	1-1/2	1-1/4	3-5/16	1/2	1-3/16	S	3/4	1/4
933711		3-5/16	1-1/2	3/4	5/8	5/8	11/16	S	3/4	1/4
33713		5-3/16	1-1/2	3/4	2-1/2	5/8	5/8	S	3/4	1/4
33715		3-7/8	1-1/2	7/8	1-1/4	5/8	1/2	S	7/8	1/4
33717		5-5/16	1-1/2	7/8	2	5/8	7/8	S	7/8	1/4
33811		6-1/8	1-1/2	1-1/4	2-1/4	1/2	1-1/16	H	1	1/4
33814		7-3/8	1-1/2	1-1/4	3-5/16	1/2	1-3/16	H	1	1/4
33815		5-1/4	2	1-1/4	1-3/8	3/4	27/32	H	1-1/4	5/16
33816		6-7/16	2-1/2	1-1/2	2	7/8	15/16	H	1-1/2	1/2



While we show only the most popular **TECO** items, we can supply their entire range of products. See our website or inquire.

WORK HOLDING DEVICES - CLAMPS



CLAMPING & SET-UP COMPONENTS

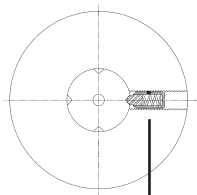
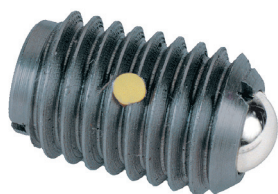
SERIES 803:



WORK HOLDING DEVICES - CLAMPS

STANDARD BALL PLUNGERS

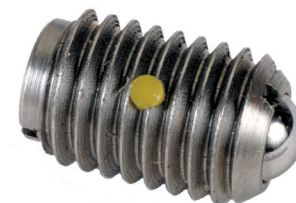
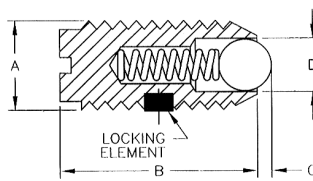
- Stainless Steel Ball
- Bodies are color coded to indicate end forces:
Zinc = Light Force
Black = Standard Force
Gold = Heavy Force
- Nylon locking element is standard on all sizes.
- Many sizes conform to TCMAI Standards.
- It is suggested the tapped installation hole be countersunk 90° by 1/32 larger than major thread diameter to prevent installation damage to locking element.



Ball Plunger

STAINLESS STEEL BALL PLUNGERS

- Stainless Steel Ball
- Bodies are color coded to indicate end forces:
Plain Stainless Steel = Light Force
Black = Standard Force
Gold = Heavy Force
- Nylon locking element is standard on all sizes.
- Many sizes conform to TCMAI Standards.
- It is suggested the tapped installation hole be countersunk 90° by 1/32 larger than major thread diameter to prevent installation damage to locking element.



INCH

Order No.	Price	Body Color Type	End Force lbs.		Thread A	B	C	Ball Dia. D
			Initial	Final				
52821		Black	0.12	0.50	4-48	3/16	0.02	0.062
52822		Black	0.25	0.75	5-40	1/4	0.02	0.062
52823		Black	0.50	1.00	6-40	5/16	0.023	0.078
52824		Black	0.50	1.25	8-36	11/32	0.025	0.093
952825		Black	.50	1.25	8-32	11/32	0.025	0.093
9952801		Zinc	0.50	1.50	10-32	33/64	0.025	0.093
9952802		Black	1.50	3.00	10-32	33/64	0.025	0.093
9952803		Gold	2.00	5.00	10-32	33/64	0.025	0.093
9952804		Zinc	2.00	4.00	1/4-20	17/32	0.035	0.125
9952805		Black	3.00	7.00	1/4-20	17/32	0.035	0.125
9952806		Gold	4.00	12.00	1/4-20	17/32	0.035	0.125
9952807		Zinc	2.00	4.50	5/16-18	37/64	0.04	0.156
9952808		Black	4.00	9.00	5/16-18	37/64	0.04	0.156
9952809		Gold	6.00	17.00	5/16-18	37/64	0.04	0.156
9952810		Zinc	2.50	5.00	3/8-16	5/8	0.048	0.187
9952811		Black	5.00	10.00	3/8-16	5/8	0.048	0.187
9952812		Gold	6.00	21.00	3/8-16	5/8	0.048	0.187
52813		Zinc	3.00	6.00	1/2-13	3/4	0.072	0.281
52814		Black	6.00	12.00	1/2-13	3/4	0.072	0.281
52815		Gold	6.00	30.00	1/2-13	3/4	0.072	0.281
9952816		Zinc	4.50	9.00	5/8-11	63/64	0.096	0.375
9952817		Black	9.00	18.00	5/8-11	63/64	0.096	0.375
52818		Gold	7.00	50.00	5/8-11	63/64	0.096	0.375

INCH

Order No.	Price	Body Color Type	End Force lbs.		Thread A	B	C	Ball Dia. D
			Initial	Final				
9952901		Plain	0.12	0.50	4-48	3/16	0.02	0.062
9952902		Plain	0.25	0.75	5-40	1/4	0.02	0.062
9952903		Plain	0.50	1.00	6-40	5/16	0.023	0.078
52904		Plain	0.50	1.25	8-36	11/32	0.025	0.093
52923		Plain	0.50	1.25	8-32	11/32	0.025	0.093
52905		Plain	0.50	1.50	10-32	33/64	0.025	0.093
52906		Black	1.50	3.00	10-32	33/64	0.025	0.093
9952907		Gold	2.00	5.00	10-32	33/64	0.025	0.093
9952908		Plain	2.00	4.00	1/4-20	17/32	0.035	0.125
9952909		Black	3.00	7.00	1/4-20	17/32	0.035	0.125
52910		Gold	4.00	12.00	1/4-20	17/32	0.035	0.125
9952911		Plain	2.00	4.50	5/16-18	37/64	0.04	0.156
9952912		Black	4.00	9.00	5/16-18	37/64	0.04	0.156
9952913		Gold	6.00	17.00	5/16-18	37/64	0.04	0.156
52914		Plain	2.50	5.00	3/8-16	5/8	0.048	0.187
9952915		Black	5.00	10.00	3/8-16	5/8	0.048	0.187
52916		Gold	6.00	21.00	3/8-16	5/8	0.048	0.187
9952917		Plain	3.00	6.00	1/2-13	3/4	0.072	0.281
9952918		Black	6.00	12.00	1/2-13	3/4	0.072	0.281
52919		Gold	6.00	30.00	1/2-13	3/4	0.072	0.281
9952920		Plain	4.50	9.00	5/8-11	63/64	0.096	0.375
52921		Black	9.00	18.00	5/8-11	63/64	0.096	0.375
52922		Gold	7.00	50.00	5/8-11	63/64	0.096	0.375

METRIC

Order No.	Body Color Type	End Force N* (lbs.)		Thread A	B mm	C mm	D mm	Price
		Initial	Final					
63901	Black	4 (.90)	10 (2.25)	M4 x 0.7	9	.8	2.5	
63902	Black	9 (2.02)	13 (2.92)	M6 x 1.0	14	1	3.5	
63903	Zinc	2 (.45)	6 (1.35)	M6 x 1.0	14	1	3.5	
63904	Gold	28 (6.30)	40 (9.0)	M6 x 1.0	14	1	3.5	
63905	Black	15 (3.37)	30 (6.75)	M8 x 1.25	16	1.5	5	
9963906	Zinc	5 (1.12)	10 (2.25)	M8 x 1.25	16	1.5	5	
9963907	Gold	40 (9)	60 (13.5)	M8 x 1.25	16	1.5	5	
63908	Black	20 (4.5)	35 (7.87)	M10 x 1.5	19	2	6	
63909	Zinc	8 (1.8)	15 (3.37)	M10 x 1.5	19	2	6	
9963910	Gold	60 (13.5)	90 (20.23)	M10 x 1.5	19	2	6	
63911	Black	30 (6.75)	55 (12.36)	M12 x 1.75	22	2.5	8	
9963912	Zinc	10 (2.25)	20 (4.5)	M12 x 1.75	22	2.5	8	
63913	Gold	75(16.86)	115(25.85)	M12 x 1.75	22	2.5	8	

* Newton



While we show only the most popular  items we can supply their entire range of products; please inquire.