

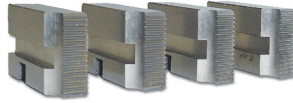
HIGH SPEED STEEL / GROUND THREAD

**STYLE "D" CHASERS**

Please see our website or inquire for sizes not shown.

**USA CHASERS** available. See our website or inquire.

SERIES 46: RIGHT HAND STANDARD  
SERIES 47: RIGHT HAND PROJECTION  
SERIES 48: LEFT HAND STANDARD  
SERIES 49: LEFT HAND PROJECTION



For Geometric® and similar Die Heads.

NOTE: "D" and "DS" chasers for up to and including 3/4" DIE HEADS are interchangeable.

5/16" Die Head					
Size	TPI	Right Hand Standard	Right Hand Projection	Left Hand Standard	Left Hand Projection
		Order No.	Order No.	Order No.	Order No.
0	80	3000800	3100800	3200800	-
1	64	3001640	3101640	3201640	-
1	72	3001720	3101720	3201720	-
2	56	3002560	3102560	3202560	-
2	64	3002640	3102640	3202640	-
3	48	3003480	3103480	3203480	-
3	56	3003560	3103560	3203560	-
4	40	3004400	3104400	3204400	3304400
4	48	3004480	3104480	3204480	-
5	40	3005400	3105400	3205400	-
5	44	3005440	3105440	3205440	-
6	40	3006400	3106400	3206400	-

5/16" Die Head					
Size	TPI	Right Hand Standard	Right Hand Projection	Left Hand Standard	Left Hand Projection
		Order No.	Order No.	Order No.	Order No.
6	32	3006320	3106320	3206320	3306320
8	32	3008320	3108320	3208320	3308320
8	36	3008360	3108360	3208360	-
10	24	3010240	3110240	3210240	3310240
10	32	3010320	3110320	3210320	3310320
12	24	3012240	3112240	3212240	3312240
12	28	3012280	3112280	3212280	-
1/4	20	3016200	3116200	3216200	3316200
1/4	28	3016280	3116280	3216280	3316280
5/16	18	3020180	3120180	3220180	3320180
5/16	24	3020240	3120240	3220240	3320240
1/16	27NPT	3000040	3100040	-	-
1/16	27NPS	3010040	3110040	-	-

9/16" Die Head					
Size	TPI	Right Hand Standard	Right Hand Projection	Left Hand Standard	Left Hand Projection
		Order No.	Order No.	Order No.	Order No.
2	56	3002561	3102561	-	-
2	64	3002641	3102641	-	-
3	48	3003481	-	3203481	-
3	56	3003561	3103561	3203561	-
4	40	3004401	3104401	3204401	-
4	48	3004481	3104481	3204481	-
5	40	3005401	3105401	3205401	-
5	44	3005441	3105441	3205441	-
6	40	3006401	3106401	3206401	-

9/16" Die Head					
Size	TPI	Right Hand Standard	Right Hand Projection	Left Hand Standard	Left Hand Projection
		Order No.	Order No.	Order No.	Order No.
6	32	3006321	3106321	3206321	3306321
8	32	3008321	3108321	3208321	3308321
8	36	3008361	3108361	3208361	-
10	24	3010241	3110241	3210241	3310241
10	32	3010321	3110321	3210321	3310321
12	24	3012241	3112241	3212241	-
12	28	3012281	3112281	3212281	-
1/4	20	3016201	3116201	3216201	3316201
1/4	28	3016281	3116281	3216281	3316281
5/16	18	3020181	3120181	3220181	3320181
5/16	24	3020241	3120241	3220241	3320241
3/8	16	3024161	3124161	3224161	3324161
3/8	24	3024241	3124241	3224241	3324241
7/16	14	3028141	3128141	3228141	3328141
7/16	20	3028201	3128201	3228201	3328201
1/2	13	3032130	3132131	3232131	3332131
1/2	20	3032201	3132201	3232201	3332201
9/16	12	3036121	3136121	3236121	3336121
9/16	18	3036181	3136181	3236181	3336181
5/8	11	3040111	3140111	-	-
5/8	18	3040181	3140181	-	-
1/16	27 NPT	3000041	3100041	-	-
1/8	27 NPT	3000081	3100081	-	-
1/4	18 NPT	3000161	3100161	-	-
3/8	18 NPT	3000241	3100241	-	-
1/16	27 NPS	3011041	3111041	-	-
1/8	27 NPS	3011081	3111081	-	-
1/4	18 NPS	3011161	3111161	-	-

(Continued)

**SELF - OPENING STATIONARY TYPE DIE HEADS**

SERIES 423:

For use on automatic and semi-automatic machines. Made to highest accuracy standards with all parts hardened and ground. Head opens automatically when the selected thread length is reached. Used with type "D" chasers (style D and DS chasers are interchangeable through 3/4" D) made by Geometric® and other manufacturers. Heads have special device for roughing and finishing and can be used for cutting over and undersized threads as well as left and right hand threads.



**MEGA**  
Superior Import

Capacity			Head Dia.	Shank Dia.	Bore	Order No.	Price
In	mm	Pipe					
5/16	8	1/16	1-1/2	5/8	3/8	2410040	
9/16	14	1/16-1/4	2-1/2	5/8	3/8	2410140	
9/16	14	1/16-1/4	2-1/2	3/4	3/8	2410148	
9/16	14	1/16-1/4	2-1/2	1	5/8	2410164	
3/4	18	1/16-1/2	3-1/4	3/4	3/8	2410248	
3/4	18	1/16-1/2	3-1/4	1	1/2	2410264	
1	24	1/8-3/4	3-3/4	1	1/2	2410364	
1	24	1/8-3/4	3-3/4	1-1/2	1-1/16	2410396	
1-1/4	30	1/4-1	4-7/8	1-1/2	7/8	2410496	
1-1/4	30	1/4-1	4-7/8	2	1-3/8	2410420	
1-1/2 *			5-5/16	1-1/2	-	2410596	
1-1/2 *			5-5/16	2	-	2410520	
2*			6-3/8	2	-	2410620	
2*			6-3/8	2-1/2	-	2410625	


\* Limited quantities available.

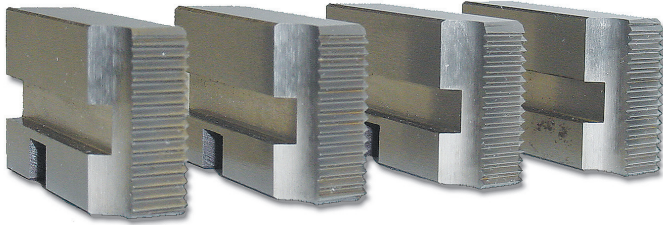
HIGH SPEED STEEL / GROUND THREAD

**STYLE "D" CHASERS** (Continued)

- SERIES 46: RIGHT HAND STANDARD
- SERIES 47: RIGHT HAND PROJECTION
- SERIES 48: LEFT HAND STANDARD
- SERIES 49: LEFT HAND PROJECTION

Please see our website or inquire for sizes not shown.

 **USA CHASERS** available. See our website or inquire.



For Geometric® and similar Die Heads.

NOTE: "D" and "DS" chasers for up to and including 3/4" DIE HEADS are interchangeable.

3/4" Die Head					
Size	TPI	Right Hand Standard	Right Hand Projection	Left Hand Standard	Left Hand Projection
		Order No.	Order No.	Order No.	Order No.
6	32	3006322	3106322	-	-
6	40	3006402	3106402	-	-
8	32	3008322	3108322	3208322	-
8	36	3008362	3108362	3208362	-
10	24	3010242	3110242	3210242	-
10	32	3010322	3110322	3210322	-
12	24	3012242	3112242	3212242	-
12	28	3012282	3112282	3212282	-
1/4	20	3016202	3116202	3216202	3316202
1/4	28	3016282	3116282	3216282	3316282
5/16	18	3020182	3120182	3220182	3320182
5/16	24	3020242	3120242	3220242	3320242
3/8	16	3024162	3124162	3224162	3324162
3/8	24	3024242	3124242	3224242	3324242
7/16	14	3028142	3128142	3228142	3328142
7/16	20	3028202	3128202	3228202	3328202
1/2	13	3032132	3132132	3232132	3332132
1/2	20	3032202	3132202	3232202	3332202
9/16	12	3036122	3136122	3236122	3336122
9/16	18	3036182	3136182	3236182	3336182
5/8	11	3040112	3140112	3240112	3340112
5/8	18	3040182	3140182	3240182	3340182
3/4	10	3048102	3148102	3248102	3348102
3/4	16	3048162	3148162	3248162	3348162
1/16	27 NPT	3000042	3100042	-	-
1/8	27 NPT	3000082	3100082	-	-
1/4	18 NPT	3000162	3100162	-	-
3/8	18 NPT	3000242	3100242	-	-
1/2	14 NPT	3000322	3100322	-	-
1/16	27 NPS	3011042	3110042	-	-
1/8	27 NPS	3011082	3110082	-	-
1/4	18 NPS	3011162	3110062	-	-
3/8	18 NPS	3011252	3110252	-	-
1/2	14 NPS	3011332	3110332	-	-



See page 208 for Die Heads

1" Die Head

Size	TPI	Right Hand Standard	Right Hand Proj.	Left Hand Standard.	Left Hand Projection
		Order No.	Order No.	Order No.	Order No.
8	32	3008323	3108323	-	-
10	24	3010243	3110243	-	-
10	32	3010323	3110323	-	-
12	24	3012243	3112243	-	-
12	28	3012283	3112283	-	-
1/4	20	3016203	3116203	3216203	3316203
1/4	28	3016283	3116283	3216283	3316283
5/16	18	3020183	3120183	3220183	3320183
5/16	24	3020243	3120243	3220243	3320243
3/8	16	3024163	3124163	3224163	3324163
3/8	24	3024243	3124243	3224243	3324243
7/16	14	3028143	3128143	3228143	3328143
7/16	20	3028203	3128203	3228203	3328203
1/2	13	3032133	3132133	3232133	3332133
1/2	20	3032203	3132203	3232203	3332203
9/16	12	3036123	3136123	3236123	-
9/16	18	3036183	3136183	3236183	-
5/8	11	3040113	3140113	3240112	3340113
5/8	18	3040183	3140183	3240183	3340183
3/4	10	3048103	3148103	3248103	3348103
3/4	16	3048163	3148163	3248163	3348163
7/8	9	3056093	3156093	3256093	3356093
7/8	14	3056143	3156143	3256143	3356143
1	8	3064083	3164083	3264083	3364083
1	12	3064123	3164123	3264123	3364123
1	14	3064143	3164143	3264143	3364143
1/8	27 NPT	3000083	3100083	-	-
1/4	18 NPT	3000163	3100163	-	-
3/8	18 NPT	3000243	3100243	-	-
1/2	14 NPT	3000323	3100323	-	-
3/4	14 NPT	3000483	3100483	-	-
1/8	27 NPS	3011083	3110083	-	-
1/4	18 NPS	3011163	3110063	-	-
3/8	18 NPS	3011253	3110253	-	-
1/2	14 NPS	3011333	3110333	-	-
3/4	14 NPS	3011483	3110483	-	-

1-1/4" Die Head

Size	TPI	Right Hand Standard	Right Hand Projection	Left Hand Standard	Left Hand Projection
		Order No.	Order No.	Order No.	Order No.
1/2	13	3032134	3132134	3232134	-
1/2	20	3032204	3132204	3232204	-
9/16	12	3036124	3136124	3236124	-
9/16	18	3036184	3136184	3236184	-
5/8	11	3040114	3140114	3240114	-
5/8	18	3040184	3140184	3240184	-
3/4	10	3048104	3148104	3248104	-
3/4	16	3048164	3148164	3248164	-
7/8	9	3056094	3156094	3256094	522631
7/8	14	3056144	3156144	3256144	522632
1	8	3064084	3164084	3264084	522633
1	12	3064124	3164124	3264124	-
1	14	3064144	3164144	3264144	522635
1-1/8	7	3072074	3172074	3272074	522636
1-1/8	12	3072124	3172124	3272124	-
1-1/4	7	3080074	3180074	3280074	522638
1-1/4	12	3080124	3180124	3280124	522639
1/4	18 NPT	3011164	3100164	-	-
3/8	18 NPT	3011254	3100244	-	-
1/2	14 NPT	3011334	3100324	-	-
3/4	14 NPT	3011484	3100484	-	-
1	11-1/2 NPT	3011644	3100644	-	-
1/4	18 NPS	3111164	3110064	-	-
3/8	18 NPS	3111254	3110254	-	-
1/2	14 NPS	3111334	3110334	-	-
3/4	14 NPS	3111484	3110484	-	-
1	11-1/2 NPS	3111644	3110644	-	-

HIGH SPEED STEEL / GROUND THREAD

**STYLE "D" CHASERS**

Series 575: SPECIAL SIZES

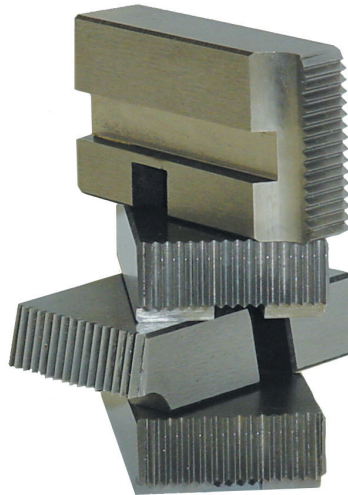
Please see our website or inquire for sizes not shown.

**USA CHASERS** available. See our website or inquire.



For Geometric® and similar Die Heads.

NOTE: "D" and "DS" chasers for up to and including 3/4" DIE HEADS are interchangeable.



5/16" Die Head			
		Right Hand Standard	Right Hand Projection
Size	TPI	Order No.	Order No.
1	56	5701560	7501560
4	32	5704320	533110
4	64	5704640	7504640
5	48	5705480	7505480
6	36	5706360	7506360
6	48	5706480	7506480
8	40	5708400	7508400
10	40	5710390	7510405
10	48	5710480	-
10	56	5710560	7510560
12	40	5712400	-
1/4	40	5716400	7516400
1/4	48	5716480	7516480
1/4	56	5716560	7516560
1/4	64	5716640	-

5/16" Die Head			
		Right Hand Standard	Right Hand Projection
Size	TPI	Order No.	Order No.
4	36	5704360	7504360
8	30	5708300	7508300
10	30	9710300	-
10	36	5710360	7510360
12	32	5712320	7512320
12	36	5712360	533131
3/16	24	5712240	-
3/16	32	9712320	-
1/4	24	5716240	7516240
1/4	27	5716270	7516270
1/4	32	5716320	7516320
1/4	36	5716360	7516360
5/16	27	5720270	533149
5/16	32	5720320	533151
3/8	32	5724320	7520320

9/16" Die Head			
		Right Hand Standard	Right Hand Projection
Size	TPI	Order No.	Order No.
4	64	5704641	533207
5	48	5705481	7505481
6	48	5706481	7506481
8	40	5708401	533213
10	40	5710401	7510401
10	48	5710481	-
10	56	5710561	7510561
12	40	5712401	-
1/4	40	5716401	7516411
1/4	48	5716481	-
1/4	56	5716561	533237
1/4	64	5716641	-
3/8	40	5724401	7524401
3/8	48	5724481	533252
7/16	40	5728401	7528401
1/2	40	5732401	533270
1/2	64	5732641	-

9/16" Die Head			
		Right Hand Standard	Right Hand Projection
Size	TPI	Order No.	Order No.
4	32	5704321	7504321
4	36	5704361	7504361
6	36	5706361	7506321
8	30	5708301	-
10	30	5710301	-
12	32	5712321	7512321
12	36	5712361	-
14	20	5714201	7514201
14	24	5714241	-
1/4	24	5716241	7516241
1/4	27	5716271	7516271
1/4	30	5716301	-
1/4	32	5716321	7516321
1/4	36	5716361	7516371
5/16	27	5720271	533239
5/16	32	5720321	7520325
3/8	18	5724181	7524181
3/8	20	5724201	7524201
3/8	27	5724271	7524271
3/8	32	2724321	7524321
3/8	36	5724361	-
7/16	18	5728181	7528181
7/16	24	5728241	7528241
7/16	27	5728271	7528271
7/16	28	5728281	7258281
7/16	32	5728321	7528321
1/2	12	5732121	7573121
1/2	16	5732161	533263
1/2	18	5732181	7532181
1/2	24	5732241	7532241
1/2	27	5732271	7532271
1/2	28	5732281	533267
1/2	32	5732321	7532321
9/16	20	5736201	533273
9/16	24	5736241	-
9/16	27	5736271	7536271
9/16	28	5736281	7536281
9/16	32	5736321	7536321
5/8	24	5740241	7540241
5/8	27	5740271	-
5/8	32	5740321	-

(Continued)

**SELF - OPENING STATIONARY TYPE DIE HEADS**

SERIES 423:



For use on automatic and semi-automatic machines. Made to highest accuracy standards with all parts hardened and ground. Head opens automatically when the selected thread length is reached. Used with type "D" chasers (style D and DS chasers are interchangeable through 3/4" D) made by Geometric® and other manufacturers. Heads have special device for roughing and finishing and can be used for cutting over and undersized threads as well as left and right hand threads.

Capacity			Head Dia.	Shank Dia.	Bore	Order No.	Price
In	mm	Pipe					
5/16	8	1/16	1-1/2	5/8	3/8	2410040	
9/16	14	1/16-1/4	2-1/2	5/8	3/8	2410140	
9/16	14	1/16-1/4	2-1/2	3/4	3/8	2410148	
9/16	14	1/16-1/4	2-1/2	1	5/8	2410164	
3/4	18	1/16-1/2	3-1/4	3/4	3/8	2410248	
3/4	18	1/16-1/2	3-1/4	1	1/2	2410264	
1	24	1/8-3/4	3-3/4	1	1/2	2410364	
1	24	1/8-3/4	3-3/4	1-1/2	1/2	2410396	
1-1/4	30	1/4-1	4-7/8	1-1/2	7/8	2410496	
1-1/4		1/4-1	4-7/8	2	1-3/8	2410420	
1-1/2 *			5-5/16	1-1/2	-	2410596	
1-1/2 *			5-5/16	2	-	2410520	
2*			6-3/8	2	-	2410620	
2*			6-3/8	2-1/2	-	2410625	

\* Limited quantities available.

HIGH SPEED STEEL / GROUND THREAD

**STYLE "D" CHASERS**

SERIES 575: SPECIAL SIZES (Continued)

For Geometric® and similar Die Heads.

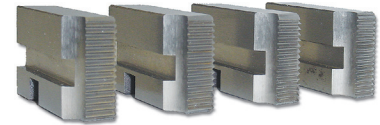
NOTE: "D" and "DS" chasers for up to and including 3/4" DIE HEADS are interchangeable.

3/4" Die Head			
		Right Hand Standard	Right Hand Projection
Size	TPI	Order No.	Order No.
3/8	40	5724402	533329
7/16	40	5728402	-
1/2	40	5732402	7532402
5/8	40	5740402	-

3/4" Die Head			
		Right Hand Standard	Right Hand Projection
Size	TPI	Order No.	Order No.
1/4	24	5716242	7516242
1/4	27	5716272	7516272
1/4	32	5716322	7516322
5/16	27	5720272	7520272
3/8	18	5724182	533323
3/8	20	5724202	-
3/8	27	5724272	-
3/8	32	5724322	7524322
7/16	10	5728102	-
7/16	24	5728242	7528242
7/16	27	5728272	-
7/16	28	5728282	7528282
7/16	32	5728322	7528322
1/2	12	5732122	7532122
1/2	24	5732242	-
1/2	27	5732262	7532272
1/2	28	5732282	7532282
1/2	32	5732322	533345
9/16	20	5736202	533350
9/16	24	5736242	7536242
9/16	27	5736272	7536272
9/16	28	5736282	7536282
9/16	32	5716324	7536322
5/8	12	5740122	7540122
5/8	20	5740202	7540202
5/8	24	5740242	7540242
5/8	32	5740322	7540322
11/16	11	5744112	7544112
11/16	12	5744122	7544122
11/16	13	5744132	-
11/16	16	5744162	7544162
11/16	18	5744182	7544182
11/16	27	5744272	-
11/16	32	5744322	533370
3/4	12	5748122	533371
3/4	18	5748182	7548182
3/4	20	3048202	7548202
3/4	24	5748242	7548242
3/4	27	5748272	7548272
3/4	28	5748282	7548282
3/4	32	5748322	533378

1" Die Head			
		Right Hand Standard	Right Hand Projection
Size	TPI	Order No.	Order No.
14	20	5714203	7514203
1/4	27	5716273	-
1/4	32	5716323	-
5/16	16	5720163	-
5/16	27	5720273	-
3/8	20	5724203	7524203
3/8	27	5724273	9524273
7/16	18	5728183	-
7/16	24	5728243	7528243
7/16	27	5728273	-
7/16	28	5728283	-
7/16	32	5728323	-
1/2	12	5732123	7532123
1/2	24	5732243	-
1/2	27	5732273	7532273
1/2	28	5712283	7532283
1/2	32	5712323	7532322
9/16	24	5736243	7536243
9/16	32	5736323	-
5/8	12	5740123	7540123
5/8	24	5740243	7540243
5/8	27	5740273	9540273
5/8	32	5740323	7540323
11/16	11	5744113	7544113
11/16	12	5744123	7544123
11/16	16	5744163	7544163
11/16	18	5744183	-
11/16	20	5744203	-
11/16	24	5744243	-
11/16	27	527368	527599
11/16	32	5744323	-
3/4	6	5748063	-
3/4	12	5748123	7548123
3/4	18	5748183	7548183
3/4	20	5748203	7548203
3/4	24	5748243	7548243
3/4	27	5748273	7548273
3/4	28	5748283	7548283
3/4	32	5748323	-
13/16	10	5752103	-
13/16	12	5752123	7552123
13/16	16	5752163	7552163
13/16	20	5752203	7552203
13/16	24	5752243	-
13/16	27	5752273	-
13/16	32	5752323	9552323
7/8	12	5756123	7556123
7/8	16	5756163	7556163
7/8	18	5756183	7556183
7/8	20	5756203	7556203
7/8	24	5756243	7556243
7/8	27	5756273	7556273
7/8	28	5756283	7556283
7/8	32	5756323	-
15/16	9	5760093	-
15/16	12	5760123	7560123
15/16	16	5760163	7560163
15/16	18	5760183	533498
15/16	20	5760203	533499
15/16	24	5760243	533501
1	16	5764163	7564163
1	18	5764183	7564183
1	20	5764203	7564203
1	24	5764243	7564243
1	27	5764273	-
1	28	5764283	7564283
1	32	5764323	9564323

Please see our website or inquire for sizes not shown.



1-1/4" Die Head			
		Right Hand Standard	Right Hand Projection
Size	TPI	Order No.	Order No.
5/8	24	5740244	533629
11/16	11	5744114	7544114
11/16	16	5744164	7544164
11/16	18	5744184	-
11/16	20	5744204	-
11/16	24	5744244	-
11/16	32	5744324	-
3/4	18	5748184	7548184
3/4	24	5748244	-
3/4	32	5748324	-
13/16	16	5752164	-
13/16	18	5752184	-
13/16	20	5752204	533653
13/16	24	5752244	7552244
7/8	12	5756124	7556124
7/8	16	5756164	-
7/8	20	5756204	7556204
7/8	24	5756244	7556244
7/8	27	5756274	7556274
7/8	32	5760324	-
15/16	12	5760124	533665
15/16	16	5760164	7560164
15/16	18	5760184	-
15/16	20	5760204	-
1	16	5764164	7564164
1	18	5764184	-
1	20	5764204	7564204
1	27	5764274	-
1	32	5764324	533680
1-1/16	12	5768124	7568124
1-1/16	16	5768164	533683
1-1/16	20	5768204	7568204
1-1/8	8	5772084	7572084
1-1/8	16	5772164	7572164
1-1/8	18	5772184	7572184
1-3/16	12	5776124	7576124
1-3/16	16	5776164	7576164
1-3/16	18	5776184	-
1-1/4	8	5780084	-
1-1/4	14	5780144	7576144
1-1/4	16	5780164	-
1-1/4	18	5780184	7576184
1-1/4	20	537599	533699

**SEE PAGE 208 FOR DIE HEADS**

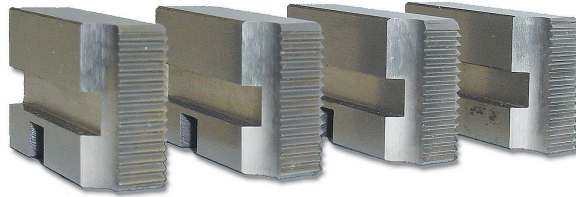
CUTTING TOOLS - CHASERS & DIE HEADS

HIGH SPEED STEEL / GROUND THREAD

**STYLE "D" CHASERS** (Continued)  
SERIES 576: METRIC SIZES

For Geometric® and similar Die Heads.

NOTE: "D" and "DS" chasers for up to and including 3/4" DIE HEADS are interchangeable.



Please see our website or inquire for sizes not shown.

**USA CHASERS** available. See our website or inquire.

CUTTING TOOLS - CHASERS & DIE HEADS

5/16" Die Head			
Size	TPI	Right Hand	
		Standard	Projection
		Order No.	Order No.
1.7	0.35	5170350	-
2	0.4	5200400	5702400
2.3	0.4	5230400	-
2.5	0.45	5725440	5725450
2.6	0.45	5260450	533912
3	0.5	5300500	5730500
3.5	0.5	5350500	-
3.5	0.6	5305060	5305160
5.5	0.5	5750500	-
6	0.5	5760050	5760051
8	0.5	5800500	-

9/16" Die Head			
Size	TPI	Right Hand	
		Standard	Projection
		Order No.	Order No.
3	0.5	5300501	5730501
5	0.5	5750502	-
5.5	0.5	5550501	-
6	0.5	5605001	5650011
8	0.5	5780501	-

3/4" Die Head			
Size	TPI	Right Hand	
		Standard	Projection
		Order No.	Order No.
6	1.0	5760102	5601002
7	1.0	5770102	5701002
8	0.75	5807502	8807502
8	1.0	5801102	5801002
8	1.25	5801254	5750805
9	1.25	5912502	8912502
10	1.0	5710102	8101002
10	1.25	8101252	5101252
10	1.5	8101502	5101502
11	1.5	5110152	5111502
12	1.0	8110102	5121002
12	1.25	8121252	8121255
12	1.5	8121502	5121502
12	1.75	5121752	8121752
14	1.0	8140112	5141002
14	1.25	5141252	8141252
14	1.5	8140152	5141502
14	2.0	8142002	8142102
16	0.75	5160752	-
16	1.0	5161002	8161002
16	1.5	8161501	533959
16	2.0	8162002	8162102
17	0.75	5170752	-
18	1.0	8181002	-
18	1.5	8181502	5181502
18	2.0	8182002	5182002
18	2.5	8182502	5182502

5/16" Die Head			
Size	TPI	Right Hand	
		Standard	Projection
		Order No.	Order No.
4	0.7	5400700	5740700
4.5	0.75	5745750	5450750
5	0.8	5500800	5750800
6	0.75	5607500	5760750
6	1.0	5760010	5760100
7	1.0	5770100	-
8	0.75	5780750	5780753
8	1.0	5781000	5801000
8	1.25	5781250	5801250

9/16" Die Head			
Size	TPI	Right Hand	
		Standard	Projection
		Order No.	Order No.
3	0.5	5278231	-
4	0.7	5400701	5740701
4.5	0.75	5450751	5745751
-	-	-	-
5	0.75	5750751	5757501
5	0.8	5750801	5750811
-	-	-	-
6	0.5	527828	533928
6	0.75	5607501	5760751
6	1.0	5760101	5601001
7	0.75	5707501	-
7	1.0	5770101	5710001
8	0.75	5780751	-
8	1.0	5781001	5801001
8	1.25	5801251	5812501
9	1.25	5901251	533934
10	1.0	5710101	-
10	1.25	5101251	8101251
10	1.5	8101501	5101501
11	1.0	5110101	5111001
11	1.5	8111501	533937
12	0.75	5120751	-
12	1.0	8110101	5121001
12	1.25	8121251	5121251
12	1.5	8121501	5121501
12	1.75	5121751	8121753
14	1.0	5140101	-
14	1.25	5141251	8141251
14	1.5	8140151	5140151
14	1.75	5141751	-
14	2.0	8142001	-
16	2.0	8162001	-

1" Die Head			
Size	TPI	Right Hand	
		Standard	Projection
		Order No.	Order No.
10	1.25	8101253	-
10	1.5	8101503	8101603
12	1.25	8121253	-
12	1.5	8121503	8120123
12	1.75	5121753	8120153
14	1.00	8140105	8121756
14	1.25	8141253	-
14	1.50	8140153	533967
14	2.0	8140203	8142103
16	1.0	8161003	-
16	1.5	8161503	8160153
16	2.0	8162003	8162103
18	1.5	8181506	8181503
18	2.0	8182003	-
18	2.5	8182503	8182505
20	1.5	8201503	8200153
20	2.5	8202503	8202513
22	1.5	8221503	8220153
22	2.5	8222503	9222513
24	3.0	8240306	8240303

1-1/4" Die Head			
Size	TPI	Right Hand	
		Standard	Projection
		Order No.	Order No.
12	1.0	8121004	-
12	1.5	8121504	-
14	1.25	8141254	-
18	1.5	8181504	-
18	2.5	8182504	8180254
20	1.5	8201504	8200154
20	2.5	8202504	8200254
22	1.5	8221504	8220154
22	2.5	8222504	8220254
24	1.5	8241504	-
24	3.0	8243004	8240304
27	1.5	8271504	-
27	3.0	8273004	8270304
30	1.5	8301504	8300154
30	2.0	8302004	8300204
30	3.5	8303504	8300354
33	1.5	8331504	-
33	3.5	8333504	8330354

See page 208 for Die Heads